

Date of issue:	07/11/2024
Subject:	<b>Neart na Gaoithe Offshore Wind Farm: Export Cable 1-Year Post Lay Survey (Updated Vessel Details)</b>
NtM number:	181
Revision:	9
Author:	Michelle Elliott, NnG Offshore Consents Manager ( <a href="mailto:michelle.elliott@nngoffshorewind.com">michelle.elliott@nngoffshorewind.com</a> )

**Mariners are advised that Neart na Gaoithe Offshore Wind Farm Limited (NnGOWL) has completed the offshore export cable hook up campaign onto the two offshore substation jacket substructures within the Neart na Gaoithe Offshore Wind Farm wind farm area and will conducting a post lay survey on the export cable.**

The offshore Export Cable hook up and burial campaign was completed on the 2<sup>nd</sup> of September 2022. The cables laid by the Cable Enterprise (call sign: 2FOV9) have been buried into the seabed by the *Normand Pacific* (call sign: LAX17).

**There has been a change in the vessels working on the campaign.** The 1-year post lay survey will be commencing on the 7th of October 2024, at the earliest from the Mersey Guardian and Glomar Worker vessels. The works will be carried out for 6 days, weather permitting.

**Mersey Guardian (call sign: 2FGL4) completed the nearshore part of the export cable survey on the 24th of October and has since left the field. The Glomar Worker (Call sign: 3EKK8) will survey the offshore section of the export cable, from the 11<sup>th</sup> of November at the earliest, working on a 24-hour basis and is expected to last 4 days, weather permitting.**

A guard vessel, the Evening Star (call sign: MNEP3), will be present with an OFLO on board throughout the course of this survey.

**.Area of Operations**

The export cable corridor and coordinates are shown in Table 1 and Figure 1.

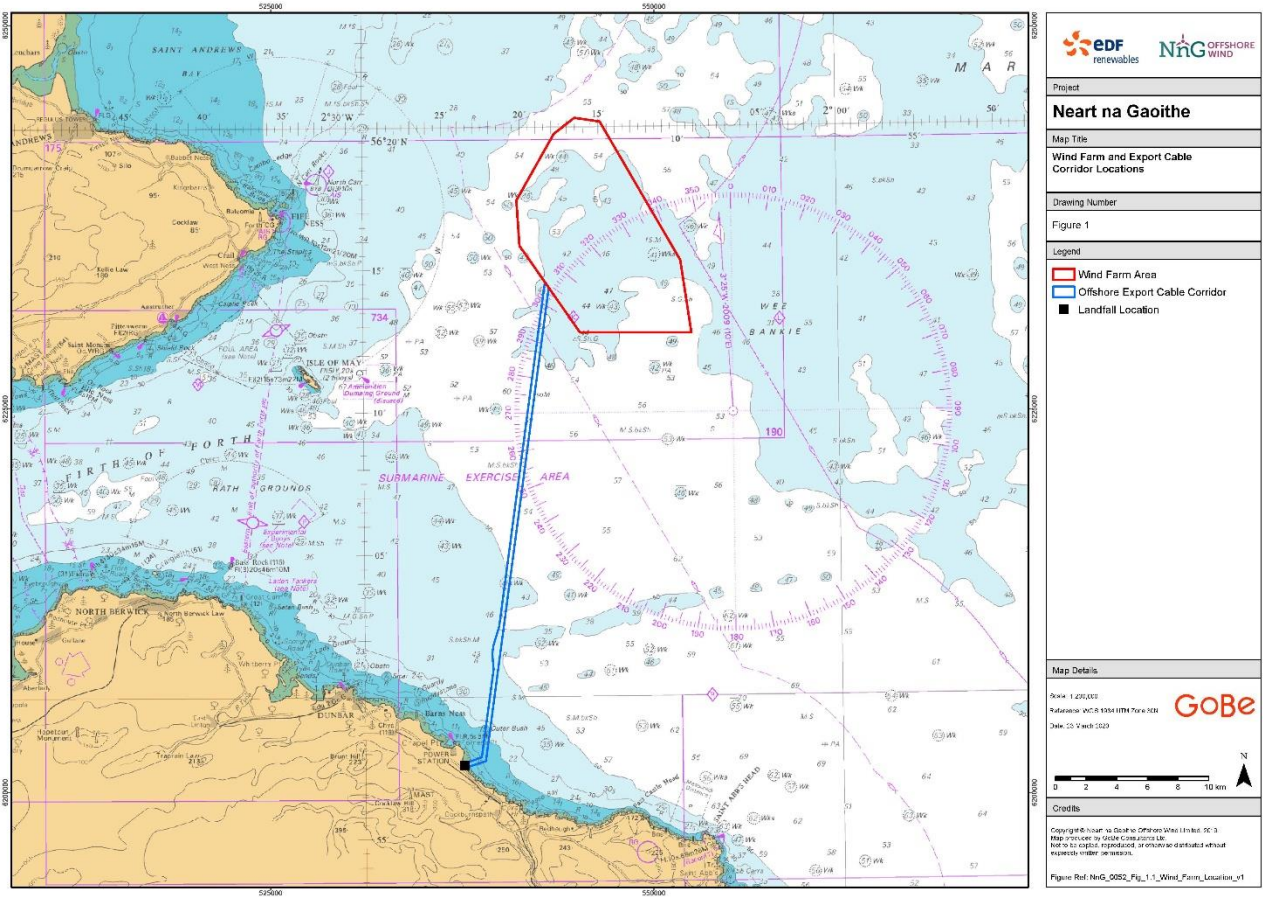


Figure 1 – NnG Offshore Wind Farm Area

Table 1 – Export Cable Corridor Coordinates

Longitude (DDM)	Latitude (DDM)
2° 22.472' W	55° 57.734' N
2° 23.539' W	55° 57.541' N
2° 23.802' W	55° 57.584' N
2° 23.820' W	55° 57.609' N
2° 23.636' W	55° 57.693' N
2° 22.729' W	55° 57.866' N
2° 21.938' W	56° 00.990' N
2° 21.951' W	56° 01.007' N
2° 22.005' W	56° 01.449' N
2° 22.004' W	56° 01.552' N
2° 21.932' W	56° 01.795' N
2° 21.563' W	56° 02.468' N

Longitude (DDM)	Latitude (DDM)
2° 18.479' W	56° 14.546' N
2° 18.237' W	56° 14.349' N

**Schedule**

The survey is expected to last 6 days, weather permitting.

For updates on the progress of the works, information will be provided in the Weekly Notice of Operations available on the NnG project website: <https://nngoffshorewind.com/resources/>.

**Adverse weather conditions**

Upon adverse weather conditions, if the construction vessels are not able to hold on position, they will seek shelter either around the Isle of May or within the Firth of Forth or return to a Port.

**Port of Operation**

Port of mobilisation and operation to be confirmed.

**Vessels Associated with the Activity**

*Table 2 – Glomar Worker Vessel Details*

Vessel name:	Glomar Worker
Vessel type:	CTV
Vessel role:	Survey Vessel
Call sign:	3EKK8
Maritime Mobile Service Identity:	352110000
IMO:	9344227
On board contact:	SAT: +87 007 328 1352 Mobile: +31 852 088 024



**General Safety Advice**

Construction activities are ongoing within the boundaries of the Neart na Gaoithe Offshore Wind Farm. Mariners are advised to refer to the NnG Weekly Notice of Operations where up to date information regarding activities on site is broadcast. A copy of this notice and the Weekly Notice of Operations can also be found at <https://nngoffshorewind.com/resources/>.

One guard vessel is currently within the wind farm site. The guard vessel associated with this activity is listed below, which can be contacted as follows, if required.

*Table 3 - Evening Star Guard Vessel*

Vessel name:	Evening Star
Vessel role:	Guard Vessel
Call sign:	MNEP3
On board contact:	Contact name: Vessel Master Email: <a href="mailto:seagullbf74@gmail.com">seagullbf74@gmail.com</a> Phone: +44 (0) 1261 878040 / +44 (0) 7895 919100

Vessel name:	Evening Star
	

**Marine Coordination Contact Details**

The following contact can provide more information if required. Please note that specific queries can also be addressed to the relevant vessel or shore-based representative.

*Table 2 - Marine Coordination Contact Details*

Telephone number (daytime):	+44 (0) 1890 751415
Emergency contact (24/7):	+44 (0) 7508 421406
Email:	<a href="mailto:nng.mc@smchse.com">nng.mc@smchse.com</a>
Address:	NnG Offshore Wind Farm Marine Coordination Centre, Gunsgreen Basin, Eyemouth, TD14 5SD

**Fisheries Liaison**

Fisheries liaison associated with the activity will be co-ordinated by Natural Power. For any commercial fishery queries please contact the NnG company Fisheries Liaison Officer (CFLO) Peter Berney, telephone: +44 (0)7391 402387 or email: [Nng.FLO@naturalpower.com](mailto:Nng.FLO@naturalpower.com). Due to vessel availability, the Guard Vessel Skipper is currently acting as Offshore Fisheries Liaison Officer (OFLO) and can be contacted via VHF Channel 16.

**Distribution List**

A central list of recipients is maintained by the company Fisheries Liaison Officer; if you are not the appropriate recipient of these notices, or do not wish to receive the notices in the future, please contact us at [Nng.FLO@naturalpower.com](mailto:Nng.FLO@naturalpower.com).

A copy of this notice can also be found at <https://nngoffshorewind.com/>