

Date of issue:	30/11/2023
Period covered:	22/11/2023 – 06/06/2023
Notice number:	172
Author:	Shini Chandramohan (shini.chandramohan@nngoffshorewind.com)

Construction of the Neart na Gaoithe (NnG) Offshore Wind Farm is ongoing. This notice is updated weekly giving information on the progress and resources involved in the offshore works. The intention is to give an overview of activities and vessels involved. Questions regarding the operations are welcomed.

Current works include;

1. Guard vessel duties (Section 3.1)
2. South Offshore Substation Commissioning (Section 3.2)
3. Foundation Drilling and Casing Installation (Section 3.3)
4. Turbine Installation (Section 3.4)
5. Inter Array Cable Installation (Section 3.5)

1 Project Location

The following tables and figures illustrate the boundaries, safety zones and exclusions applicable to the Neart na Gaoithe wind farm area and export cable corridor.

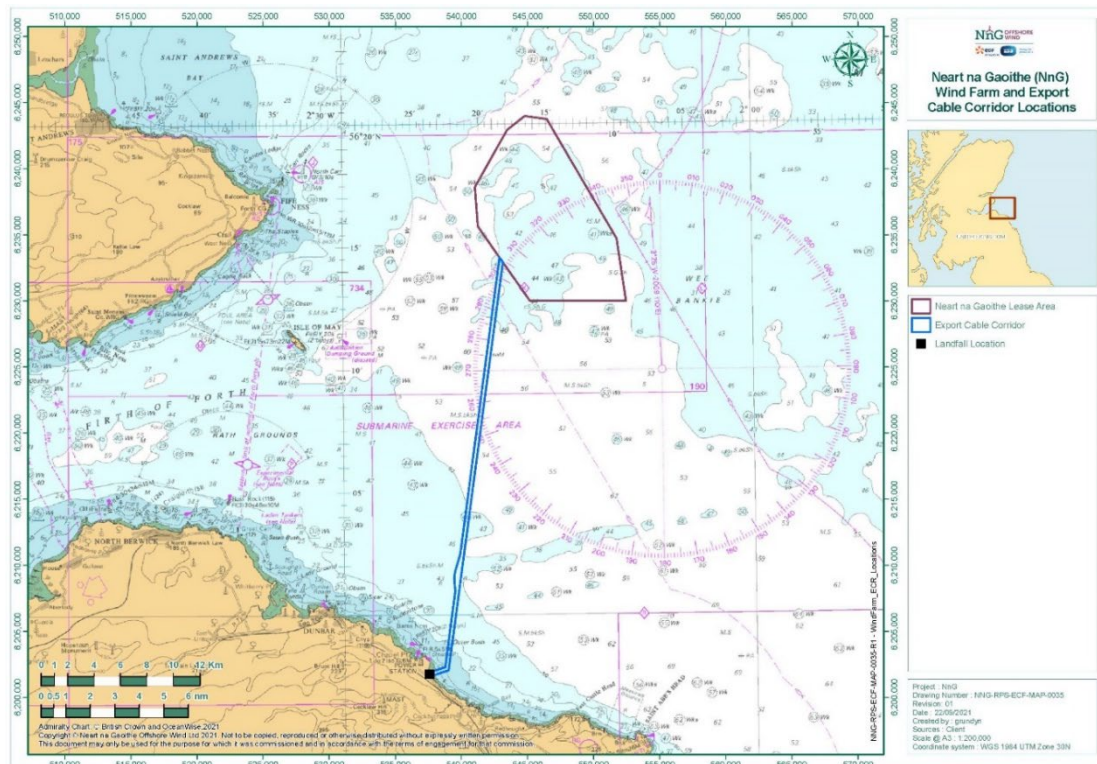


Figure 1 - Wind Farm Area and Export Cable

Table 1 - Wind Farm Area and Export Cable Coordinates

Wind Farm Area Coordinates (WGS84)	
LONGITUDE (DDM)	LATITUDE (DDM)
002° 09.898' W	56° 15.271' N
002° 09.255' W	56° 12.721' N
002° 13.998' W	56° 12.752' N
002° 16.293' W	56° 12.766' N
002° 19.628' W	56° 15.479' N
002° 20.055' W	56° 15.827' N
002° 20.232' W	56° 17.430' N
002° 17.826' W	56° 19.752' N
002° 16.518' W	56° 20.312' N
002° 14.910' W	56° 20.171' N

Export Cable Corridor Coordinates (WGS84)	
LONGITUDE (DDM)	LATITUDE (DDM)
2° 22.472' W	55° 57.734' N
2° 23.539' W	55° 57.541' N
2° 23.802' W	55° 57.584' N
2° 23.820' W	55° 57.609' N
2° 23.636' W	55° 57.693' N
2° 22.729' W	55° 57.866' N
2° 21.938' W	56° 00.990' N
2° 21.951' W	56° 01.007' N
2° 22.005' W	56° 01.449' N
2° 22.004' W	56° 01.552' N
2° 21.932' W	56° 01.795' N
2° 21.563' W	56° 02.468' N
2° 18.479' W	56° 14.546' N
2° 18.237' W	56° 14.349' N

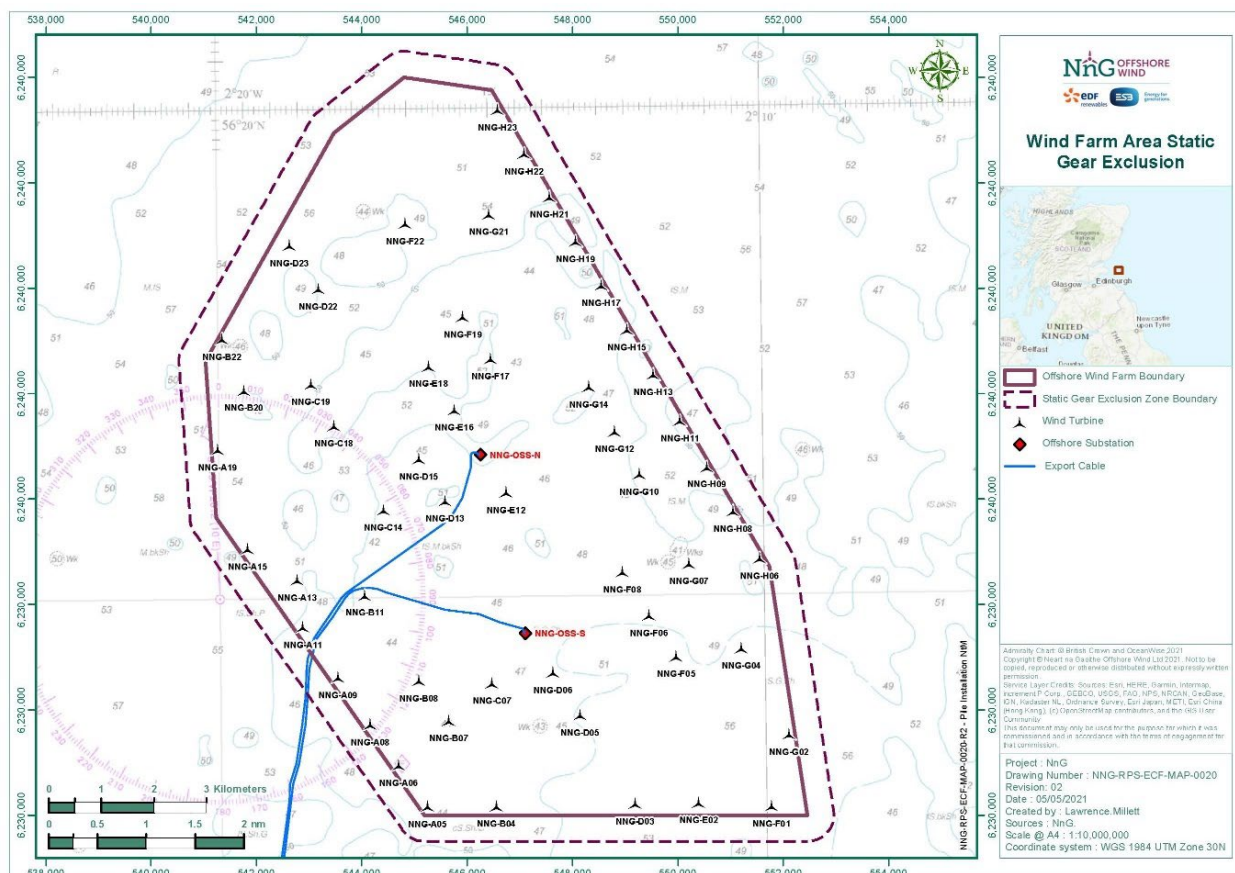


Figure 2 - Wind Farm Area Static Fishing Gear Exclusion

Table 2 - Wind Farm Area Static Fishing Gear Exclusion Coordinates

Longitude (DDM)	Latitude (DDM)
002° 20.566' W	56° 15.680' N
002° 20.849' W	56° 17.468' N
002° 18.242' W	56° 19.938' N
002° 16.611' W	56° 20.613' N
002° 14.363' W	56° 20.392' N
002° 09.300' W	56° 15.334' N
002° 08.661' W	56° 12.651' N
002° 09.058' W	56° 12.405' N
002° 16.505' W	56° 12.410' N

2 Completed Operations

2.1 Foundations Installation

Casing and pile installation operations have been successfully completed at the orange shaded locations listed in Table 3. Casing only installation operations have been completed at the grey shaded locations and locations where jacket installation has been completed are shaded green. Locations where turbine installation have been completed are shaded in blue. More information can be found at: <https://nngoffshorewind.info/>.

Table 3 – Centre coordinates of Turbine Locations and Offshore Substation Platforms with completed locations shaded.

ID	LONGITUDE (DD.MM.MMM)	LATITUDE (DD.MM.MMM)	TURBINE ID	LONGITUDE (DD.MM.MMM)	LATITUDE (DD.MM.MMM)
NNG-A13	002° 18.580' W	56° 15.153' N	NNG-F22	002° 16.536' W	56° 18.785' N
NNG-A11	002° 18.489' W	56° 14.668' N	NNG-F19	002° 15.487' W	56° 17.828' N
NNG-A09	002° 17.845' W	56° 14.153' N	NNG-F17	002° 14.978' W	56° 17.394' N
NNG-A08	002° 17.267' W	56° 13.665' N	NNG-F08	002° 12.603' W	56° 15.198' N
NNG-A06	002° 16.755' W	56° 13.248' N	NNG-F06	002° 12.129' W	56° 14.751' N
NNG-A05	002° 16.231' W	56° 12.822' N	NNG-F05	002° 11.632' W	56° 14.330' N
NNG-B22	002° 19.921' W	56° 17.623' N	NNG-G21	002° 14.988' W	56° 18.873' N
NNG-B20	002° 19.521' W	56° 17.097' N	NNG-G14	002° 13.181' W	56° 17.095' N
NNG-B11	002° 17.341' W	56° 14.989' N	NNG-G12	002° 12.715' W	56° 16.640' N
NNG-B08	002° 16.365' W	56° 14.109' N	NNG-G10	002° 12.270' W	56° 16.197' N
NNG-B07	002° 15.822' W	56° 13.695' N	NNG-G07	002° 11.379' W	56° 15.279' N
NNG-B04	002° 14.964' W	56° 12.817' N	NNG-G04	002° 10.435' W	56° 14.405' N
NNG-C19	002° 18.293' W	56° 17.155' N	NNG-G02	002° 09.572' W	56° 13.520' N
NNG-C18	002° 17.882' W	56° 16.725' N	NNG-H23	002° 14.806' W	56° 19.943' N
NNG-C14	002° 16.984' W	56° 15.858' N	NNG-H22	002° 14.322' W	56° 19.488' N
NNG-C07	002° 15.017' W	56° 14.076' N	NNG-H21	002° 13.865' W	56° 19.043' N
NNG-D23	002° 18.666' W	56° 18.572' N	NNG-H19	002° 13.397' W	56° 18.588' N

ID	LONGITUDE (DD.MM.MMM)	LATITUDE (DD.MM.MMM)	TURBINE ID	LONGITUDE (DD.MM.MMM)	LATITUDE (DD.MM.MMM)
NNG-D22	002° 18.135' W	56° 18.127' N	NNG-H17	002° 12.932' W	56° 18.134' N
NNG-D15	002° 16.321' W	56° 16.376' N	NNG-H15	002° 12.466' W	56° 17.677' N
NNG-D13	002° 15.848' W	56° 15.946' N	NNG-H13	002° 11.997' W	56° 17.214' N
NNG-D06	002° 13.894' W	56° 14.179' N	NNG-A19	002° 20.015' W	56° 16.490' N
NNG-D05	002° 13.417' W	56° 13.744' N	NNG-A15	002° 19.484' W	56° 15.474' N
NNG-D03	002° 12.421' W	56° 12.828' N	NNG-F01	002° 09.915' W	56° 12.079' N
NNG-E18	002° 16.122' W	56° 17.324' N	NNG-H11	002° 11.513' W	56° 16.740' N
NNG-E16	002° 15.658' W	56° 16.874' N	NNG-H09	002° 11.027' W	56° 16.263' N
NNG-E12	002° 14.720' W	56° 16.029' N	NNG-H08	002° 10.555' W	56° 15.808' N
NNG-E02	002° 11.251' W	56° 12.829' N	NNG-H06	002° 10.079' W	56° 15.324' N
NNG-OSS-N	002° 15.193' W	56° 16.446' N	NNG-OSS-S	002° 14.395' W	56° 14.615' N

3 Ongoing Operations

This section outlines the ongoing operations in the Project Areas, for full details regarding the activity, the applicable Notice to Mariners (NtM) can be found on our website at <https://nngoffshorewind.com/resources/>.

3.1 Guard Vessels

SFF Services has been appointed by NnGOWL to provide guard vessels during the construction of NnG Offshore Wind Farm. Apart from times of extreme weather, there will always be at least one guard vessel on site, to cover the Wind Farm Area. There is also currently at least one guard vessel on the Export Cable Corridor until works are complete. The guard vessel's primary duty is security of the construction site by informing and warning non-construction vessels of the ongoing activities and associated Safety Zones. The guard vessels present on site as of the date of issue, are shaded in blue in Table 4. The guard vessel details are provided in Section 8.1.

Table 4 - Guard Vessel Project Rotation

Guard Vessel	Start Date	End Date	Guard Vessel Area
Seagull	26/11/2023	17/12/2023	Wind Farm Area
Tranquillity	05/11/2023	26/11/2023	Wind Farm Area

3.2 Pile Installation

Description (NtM 148 Rev 6.0)
<p>Mariners are advised that Neart na Gaoithe Offshore Wind Farm Limited (NnGOWL) has completed pile installation within the Neart Na Gaoithe (NnG) Wind Farm Area.</p> <p>In preparation for the jacket foundation installation, three piles for each wind turbine location and offshore substation platform will be installed. The <i>Saipem 3000</i> (S3000) (call sign: C6SW6) has completed installation of 56 piles into pre-drilled sockets. The S3000 is currently demobilising and will be leaving the NnG Wind Farm Area on the 26th of October, at the earliest.</p>

Description (NtM 148 Rev 6.0)		
Vessels	Type / Role	Timescales
Normand Navigator	Offshore Construction Vessel	The pile installation work has completed and vessels are preparing to demobilise and leave the NnG Site.
Rem Supporter	Offshore Supply Vessel	
Area		
Project Location: Wind Farm Area, shown in Table 1 and Figure 1		

3.3 North and South Offshore Substation Commissioning

Description (NtM 177 Rev 13.0)		
<p>Mariners are advised that Neart na Gaoithe Offshore Wind Farm Limited (NnGOWL) that commissioning works of the North and South offshore substation is currently ongoing within the NnG Wind Farm Area.</p> <p>Personnel are being transported to and from the North and South OSS topside by Crew Transfer Vessels (CTV) the Rix Lion (call sign: 2HOH3) and the Forth Engineer (call sign: 2HAL3) and the Green Storm (call sign: 2EXU3) crew transfer vessel will be supporting the campaign from the 9th November at the earliest.</p> <p>The CF Explorer vessel (call sign: 5BKK5) and the MCS Kaver (call sign: 2GMB8) will be mobilised to NnG Site as additional commissioning support for the ongoing commissioning works on both OSS South and North from the 24th of October, at the earliest. The CF Explorer vessel (call sign: 5BKK5) will depart the site on the 8th of December at the earliest. The Normand Navigator (call sign: LASG7) will be on site supporting the lifting operations on the 30th of November and will depart the site on the 1st of December at the earliest.</p>		
Vessels	Type / Role	Timescales
Rix Lion	CTV	OSS commissioning commenced in early June 2022 and will continue throughout 2023.
CF Explorer	Additional CTV Support	
Forth Engineer	CTV	
MCS Kaver	CTV	
Green Storm	CTV	
Normand Navigator	Walk to Work	
Area		
Project Location: Wind Farm Area, shown in Table 1 and Figure 1		

3.4 Inter Array Cables Installation Works

Description (NtM 187 Rev 24.0)		
<p>Mariners are advised that Neart na Gaoithe Offshore Wind Farm Limited (NnGOWL) are due to commence a pre-lay grapnel run (PLGR) for the inter-array cables within the Neart na Gaoithe Offshore Wind Farm site. The works began on the 25th of November and were completed on the 29th of November.</p>		

Description (NtM 187 Rev 24.0)

The PLGR was completed by the vessel Pacific Discovery (call sign: 9VFL8) using a grapnel towed from the vessel. The grapnel will be deployed to detect and remove surface debris located on the inter-array cable routes, and at the wind turbine and offshore substation topside locations. Debris caught by the grapnel will be recovered to deck and retained on board the vessel for disposal onshore. Should fishing gear be caught, efforts will be taken to identify ownership and return. The PLGR works were completed on the 29th November and the Pacific Discovery will depart the site on the 20th November, depending on weather.

The subsequent cable installation campaign will be completed by the Viking Neptun vessel (call sign: LAYH7), the load out for the campaign will commence the 4th December at the earliest and take 7-10 days. The Viking Neptun vessel will return to the field the 14th December at the earliest and commence cable installation works. . The walk-to-work vessel, the Normand Navigator (call sign: LASG7) will support the IAC campaign and will be on site from the 4th December at the earliest.

Cable burial works were currently ongoing, from the vessel Living Stone, call sign (PBXN) and this phase of burial works were completed on the 22nd November with the Living Stone vessel departing site on the 23rd November. It will return to the Neart na Gaoithe Offshore Wind Farm site for the next phase of cable burial works, date tbc and will be confirmed in a subsequent update to this notice.

Vessels	Type / Role	Timescales
Viking Neptun	Cable Lay Out Vessel	Cable lay out works are expected to commence on the 4th of December, at the earliest.
Normand Navigator	Walk to Work vessel	Vessel will be supporting IAC installation works form the 25 th November, at the earliest.

Area

Project Location: Wind Farm Area, shown in Table 1 and Figure 1

3.5 Wind Turbine Installation

Description (NtM 191 Rev 11.0)

Mariners are advised that Neart na Gaoithe Offshore Wind Farm Limited (NnGOWL) has commenced the installation of offshore wind turbines within the Neart Na Gaoithe (NnG) Wind Farm Area. The work began on the 15th of July 2023 and is presently ongoing.

Wind turbines will be installed onto pre-installed jackets in the NnG Wind Farm Area. The turbines will be brought to site and installed from the Port of Dundee by the *Blue Tern* vessel (call sign 9HA5208) and WTG commissioning will be carried out using the *HST Swansea* call sign (MNGM8) which will be replaced by the Millie vessel call sign (MOAN6) from the 16th September at the earliest. The *Farra Ciara* call sign (MKPT9) crew transfer vessel (CTV) and the *Manor Venture crew transfer vessel* (CTV) call sign (MAWI6) will be supporting the turbine installation campaigns. The *Green Storm* (call sign: 2EXU3) crew transfer vessel has been replaced by the *Farra Emer* (call sign: MNDD6) from the 4th of September 2023, at the earliest.

Due to an engine service job, the *Farra Emer* CTV replaced by the *Farra Roisin* CTV (call sign: MODU3) on the 19th of October, at the earliest. The *Farra Emer* (call sign: MNDD6) will be returning to site on the 26th October at the earliest. Both the *Farra Emer* and *Farra Roisin* CTV's will be supporting the refuelling works for the WTG temporary generators.

Description (NtM 191 Rev 11.0)		
Additional crew transfer support will be provided by the <i>Largo</i> vessel call sign (DLYQ) from the 1 st October at the earliest and the <i>VOS Stone</i> (call sign: PBMW) from the 26 th of October, at the earliest. The <i>MCS Boreas</i> (call sign: 2GDR8) crew transfer vessel will be supporting the campaign from the 9 th of October 2023.		
Vessels	Type / Role	Timescales
Blue Tern	Installation vessel	Turbine Installation works will be carried out from the 7 th of July at the earliest.
Milie	Commissioning vessel	
Farra Ciara	CTV	
Manor	CTV	
Farra Roisin	Refuelling Vessel	
Largo	Additional CTV support	
MCS Boreas	Additional CTV Support	
VOS Stone	Additional CTV Support	
Area		
Project Location: Wind Farm Area, shown in Table 1 and Figure 1		
Operational Port: Dundee		

4 General Safety Advice

All vessels engaged in the construction activity will exhibit appropriate lights and shapes prescribed by the International Regulations for Preventing Collisions at Sea; relative to their operations. All vessels engaged in the activity will also transmit an Automatic Identification System (AIS) message. Mariners are requested to navigate with caution and keep continued watch on VHF Ch. 16, when navigating the area.

Please be aware that by virtue of their mode of operation and the equipment deployed vessels will be Restricted in their Ability to Manoeuvre (RAM) as defined under COLREGs (International Regulations for Preventing Collisions at Sea 1972, Rule 3). Masters of vessels are therefore requested to maintain their vessels and gears at a minimum safe distance from these vessels of 500 metres when it is undertaking its work and showing the appropriate shapes and lights in accordance with COLREGs Rule 18.

Use of Safety Zones within the Neart na Gaoithe Offshore Wind Farm Construction Area is as follows:

- Mandatory “rolling” 500 metres (m) Safety Zones will be established around each wind farm structure (turbines and Offshore Substation Platforms (OSP)) and/or their foundations whilst construction works are in progress, as indicated by the presence of a construction vessel. Up to ten of these Safety Zones may be active at any given time.

The duty Guard Vessels and Marine Coordination Centre will be responsible for monitoring and policing the Safety Zones; and can be contacted directly for advice. Users are advised to keep clear of construction activities, including Safety Zones.

5 Fisheries Liaison

Fisheries liaison associated with the activity will be co-ordinated by the Company Fisheries Liaison Officer. For any commercial fishery queries please contact: Peter Berney, telephone: +44 (0)7391 402387 or email: Nng.FLO@naturalpower.com. An Offshore Fisheries Liaison Officer is present on the *Saipem 3000* and can be contacted on Ch16. For any other general queries please contact info@nngoffshorewind.com.




6 Marine Coordination Contact Details

The following contact can provide more information if required. Please note that specific queries can also be addressed to the relevant vessel or shore-based representative. The contact details for the marine coordination centre are indicated in Table 5.



Table 5 – Marine Coordination Contact Details

Telephone number (daytime operations):	+44 (0)7508421406 / +44 (0)1890 751415
Emergency contact (24/7):	+44 (0)7508421406 / +44 (0)1890 751415
Email:	nng.mc@smchse.com
Address:	NnG Offshore Wind Farm Marine Coordination Centre Gungreen Basin Eyemouth TD14 5SD

7 Vessels Associated with the Activity

Vessel	Vessel Function	Vessel Contact Details	Vessel Information
7.1 Guard Vessels			
Tranquillity S 	Guard Vessel	Contact Name: David Spouse Email: spousefishing@gmail.com Phone: 01890 530168	Call sign: MJUH9 IMO: N/A MMSI: 235053837
Seagull 	Guard Vessel	Contact name: Vessel Master Email: seagullbf74@gmail.com Phone: +44 (0) 1261 878040 / +44 (0) 7895 919100	Call sign: MVBO2 IMO: 9112545 MMSI: 233714000
7.2 Pile Installation			
Rem Supporter 	Type: Platform Supply Vessel (PSV) Function: Transport supplies to	Contact name: Master of Rem Supporter Email: captain@supporter.remoffshore.no Phone (FBB) : +870773946639	Call sign: 5BCN3 IMO: 9482330 MMSI: 209051000

Vessel	Vessel Function	Vessel Contact Details	Vessel Information
	NnG offshore wind farm.		
7.3 North and South Offshore Substation Commissioning			
Rix Lion 	CTV	Contact name: Ships Master (Will be rotated with shifts) Email: rix.lion@rix.co.uk Phone: +447702 975599	Call sign: 2HOH3 IMO: 9745706 MMSI: 235105282
CF Explorer 	Plant/ Personnel Transfer	TBC	Call sign: 5BKK5 MMSI: 209816000
Forth Engineer 	CTV	TBC	Call sign: 2HAL3 MMSI: 235102028 IMO: 9712747
MCS Kaver 	Additional CTV Support	TBC	Call sign: 2GMB8 MMSI: 235098572
Green Storm 	Additional CTV Support	TBC	Call sign: 2EXU3 MMSI: 2EXU3 IMO: 9638240
Normand Navigator	Walk to Work vessel	TBC	Call sign: LASG7

Vessel	Vessel Function	Vessel Contact Details	Vessel Information
			MMSI: 257794000 IMO: 9687356
7.4 Cable Installation for August IAC Campaign			
Viking Neptun 	Cable Lay Vessel	Contact name: Mobile Captain Email: Captain.VikingNeptun@deme-group.com / Bridge.VikingNeptun@deme-group.com Phone: +47 9746 9156	Call sign: LAYH7 MMSI: 258789000 IMO: 9664902
Normand Navigator 	Piling Grouting Vessel	Contact name: Master of Normand Navigator Email: master@navigator.solstad.com Phone (Iridium) : +881677102711	Call sign: LASG7 IMO: 9687356 MMSI: 257794000
7.5 Commencement of Wind Turbine Installation			
Blue Tern 	Installation vessel	Contact name: Blue Tern Master Email: master.blr@fredolsen.com Phone: +47 5100 5334 or +47 5120 6200	Call sign: 9HA5208 MSSI: 215644000
HST Millie 	Commissioning vessel	Tel: +44 7715 637335 Email: HSTMillie@Puruuswind.com	Call sign: MOAN6 MMSI: 232048990
Farra Ciara	CTV	Contact name: Vessel master	Call sign: VRUG4

Vessel	Vessel Function	Vessel Contact Details	Vessel Information
 <p>© Hans-Peter Schroeder MarineTraffic.com</p>		Email: ciara@farramarine.com Phone : +44 (0) 7742 554 947	MMSI: 232039877
Farra Roisin  <p>© John Spence MarineTraffic.com</p>	CTV	Contact name: TBC Email: TBC Phone : TBC	Call sign: MODU3 MMSI: 232049709
Manor  <p>© Michael Thomas MarineTraffic.com</p>	CTV	Contact name: Vessel master Email: VENTURE@MRELTD.co.uk Phone: +4474073455854 Satcom: +442031290607	Call sign: MAWI6 MMSI: 232007444
Largo  <p>© Frank-Peter Mecklenbeck MarineTraffic.com</p>	CTV (Temporary Generator Refuelling)	Contact name: Vessel Master Email: TBC Phone: TBC SAT com: TBC	Call sign: DLYQ MMSI: 211303540
MCS Boreas  <p>© Eddy Depoort MarineTraffic.com</p>	CTV (Temporary Generator Refuelling)	Captain Phone: +44 7876 861 748 VSAT Phone: +44 1475 830 689 Email: mcsboreas@maritimecraft.co.uk	Call sign: 2GDR8 MMSI: 235096501

Vessel	Vessel Function	Vessel Contact Details	Vessel Information
<p>VOS Stone</p> 	Crew Transfer & Walk to Work Vessel	<p>Master VOS Stone Mobile: +31 629584362 V-Sat (Bridge): +88 858886069 Iridium (Bridge): +88 1677104825</p> <p>E-mail: bridge@vosstone.fleetvroom.com</p>	<p>Call sign: PBMW</p> <p>MMSI: 244030181</p> <p>IMO: 9730517</p>
<p>Farra Emer</p> 	CTV	TBC	<p>Call sign: MNDD6</p> <p>MMSI: 232046091</p> <p>IMO: 9971331</p>