

Date of issue:	23/03/2023
Period covered:	22/03/2023 – 05/04/2023
Notice number:	138
Author:	Michelle Elliott (michelle.elliott@nngoffshorewind.com)

Construction of the Neart na Gaoithe (NnG) Offshore Wind Farm is ongoing. This notice is updated weekly giving information on the progress and resources involved in the offshore works. The intention is to give an overview of activities and vessels involved. Questions regarding the operations are welcomed.

Current works include;

1. Guard vessel duties (Section 3.1)
2. Pile Installation (Section 3.2)
3. South Offshore Substation Commissioning (Section 3.3)
4. Foundation Drilling and Casing Installation (Section 3.4)
5. North Offshore Substation Commissioning (Section 3.5)

1 Project Location

The following tables and figures illustrate the boundaries, safety zones and exclusions applicable to the Neart na Gaoithe wind farm area and export cable corridor.

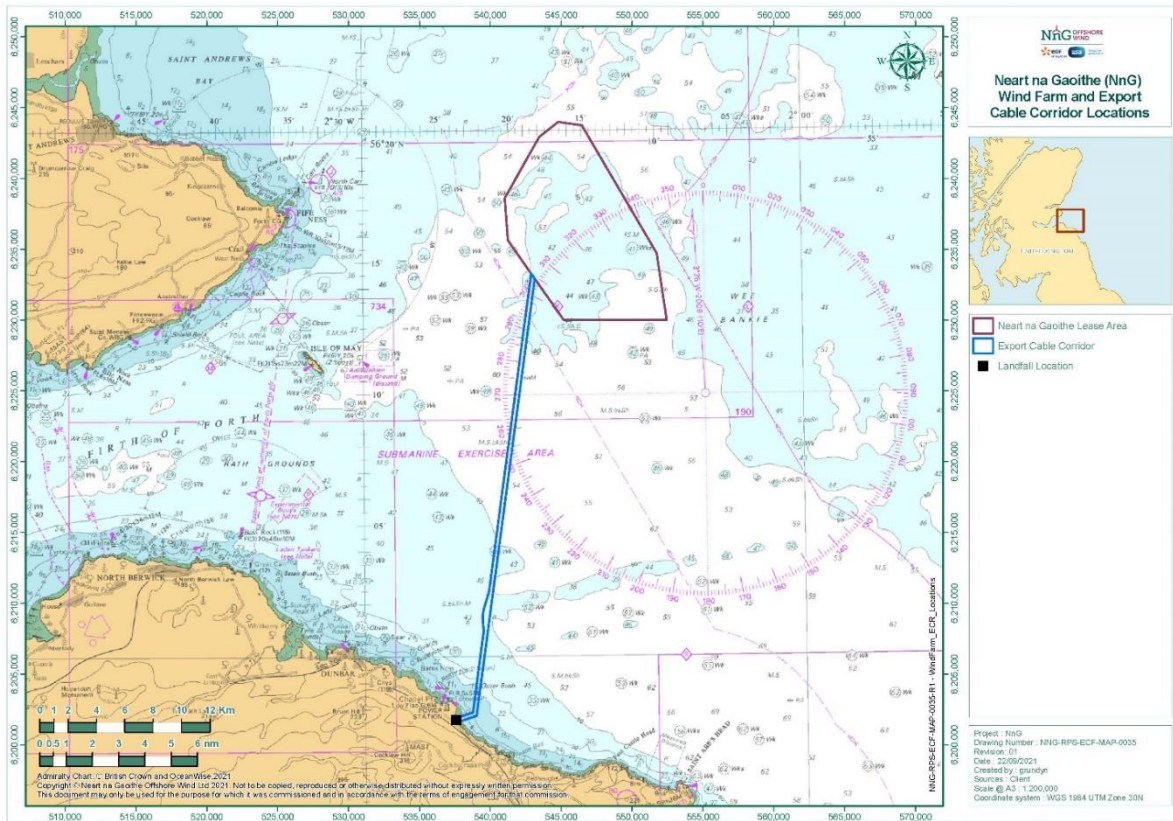


Figure 1 - Wind Farm Area and Export Cable

Table 1 - Wind Farm Area and Export Cable Coordinates

Wind Farm Area Coordinates (WGS84)	
LONGITUDE (DDM)	LATITUDE (DDM)
002° 09.898' W	56° 15.271' N
002° 09.255' W	56° 12.721' N
002° 13.998' W	56° 12.752' N
002° 16.293' W	56° 12.766' N
002° 19.628' W	56° 15.479' N
002° 20.055' W	56° 15.827' N
002° 20.232' W	56° 17.430' N
002° 17.826' W	56° 19.752' N
002° 16.518' W	56° 20.312' N
002° 14.910' W	56° 20.171' N

Export Cable Corridor Coordinates (WGS84)	
LONGITUDE (DDM)	LATITUDE (DDM)
2° 22.472' W	55° 57.734' N
2° 23.539' W	55° 57.541' N
2° 23.802' W	55° 57.584' N
2° 23.820' W	55° 57.609' N
2° 23.636' W	55° 57.693' N
2° 22.729' W	55° 57.866' N
2° 21.938' W	56° 00.990' N
2° 21.951' W	56° 01.007' N
2° 22.005' W	56° 01.449' N
2° 22.004' W	56° 01.552' N
2° 21.932' W	56° 01.795' N
2° 21.563' W	56° 02.468' N
2° 18.479' W	56° 14.546' N
2° 18.237' W	56° 14.349' N

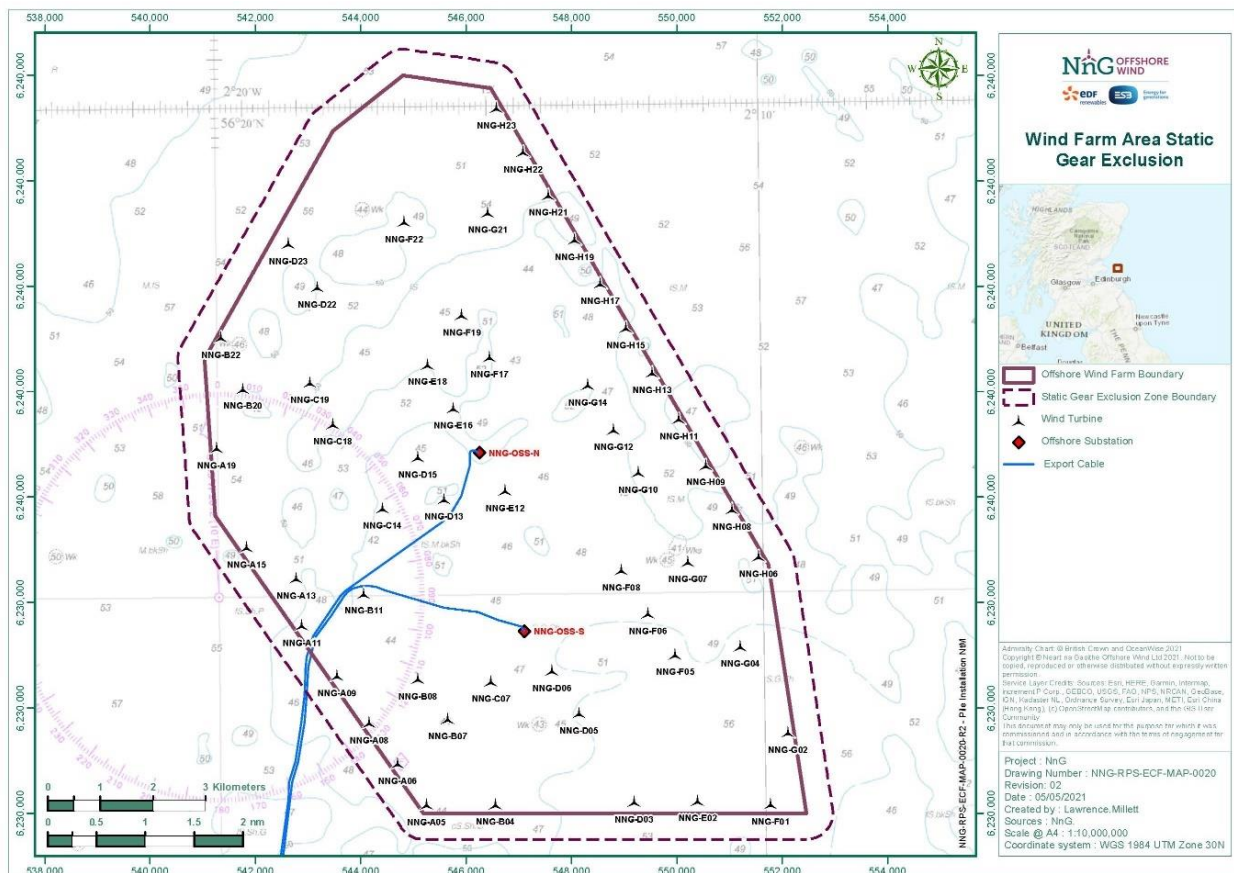


Figure 2 - Wind Farm Area Static Fishing Gear Exclusion

Table 2 - Wind Farm Area Static Fishing Gear Exclusion Coordinates

Longitude (DDM)	Latitude (DDM)
002° 20.566' W	56° 15.680' N
002° 20.849' W	56° 17.468' N
002° 18.242' W	56° 19.938' N
002° 16.611' W	56° 20.613' N
002° 14.363' W	56° 20.392' N
002° 09.300' W	56° 15.334' N
002° 08.661' W	56° 12.651' N
002° 09.058' W	56° 12.405' N
002° 16.505' W	56° 12.410' N

2 Completed Operations

2.1 Foundations Installation

Casing and pile installation operations have been successfully completed at the orange shaded locations listed in Table 3. Casing only installation operations have been completed at the grey shaded locations and locations where jacket installation has been completed are shaded green. More information can be found at: <https://nngoffshorewind.info/>.

Table 3 – Centre coordinates of Turbine Locations and Offshore Substation Platforms with completed locations shaded

ID	LONGITUDE (DD.MM.MMM)	LATITUDE (DD.MM.MMM)	TURBINE ID	LONGITUDE (DD.MM.MMM)	LATITUDE (DD.MM.MMM)
NNG-A13	002° 18.580' W	56° 15.153' N	NNG-F22	002° 16.536' W	56° 18.785' N
NNG-A11	002° 18.489' W	56° 14.668' N	NNG-F19	002° 15.487' W	56° 17.828' N
NNG-A09	002° 17.845' W	56° 14.153' N	NNG-F17	002° 14.978' W	56° 17.394' N
NNG-A08	002° 17.267' W	56° 13.665' N	NNG-F08	002° 12.603' W	56° 15.198' N
NNG-A06	002° 16.755' W	56° 13.248' N	NNG-F06	002° 12.129' W	56° 14.751' N
NNG-A05	002° 16.231' W	56° 12.822' N	NNG-F05	002° 11.632' W	56° 14.330' N
NNG-B22	002° 19.921' W	56° 17.623' N	NNG-G21	002° 14.988' W	56° 18.873' N
NNG-B20	002° 19.521' W	56° 17.097' N	NNG-G14	002° 13.181' W	56° 17.095' N
NNG-B11	002° 17.341' W	56° 14.989' N	NNG-G12	002° 12.715' W	56° 16.640' N
NNG-B08	002° 16.365' W	56° 14.109' N	NNG-G10	002° 12.270' W	56° 16.197' N
NNG-B07	002° 15.822' W	56° 13.695' N	NNG-G07	002° 11.379' W	56° 15.279' N
NNG-B04	002° 14.964' W	56° 12.817' N	NNG-G04	002° 10.435' W	56° 14.405' N
NNG-C19	002° 18.293' W	56° 17.155' N	NNG-G02	002° 09.572' W	56° 13.520' N
NNG-C18	002° 17.882' W	56° 16.725' N	NNG-H23	002° 14.806' W	56° 19.943' N
NNG-C14	002° 16.984' W	56° 15.858' N	NNG-H22	002° 14.322' W	56° 19.488' N
NNG-C07	002° 15.017' W	56° 14.076' N	NNG-H21	002° 13.865' W	56° 19.043' N
NNG-D23	002° 18.666' W	56° 18.572' N	NNG-H19	002° 13.397' W	56° 18.588' N
NNG-D22	002° 18.135' W	56° 18.127' N	NNG-H17	002° 12.932' W	56° 18.134' N

ID	LONGITUDE (DD.MM.MMM)	LATITUDE (DD.MM.MMM)	TURBINE ID	LONGITUDE (DD.MM.MMM)	LATITUDE (DD.MM.MMM)
NNG-D15	002° 16.321' W	56° 16.376' N	NNG-H15	002° 12.466' W	56° 17.677' N
NNG-D13	002° 15.848' W	56° 15.946' N	NNG-H13	002° 11.997' W	56° 17.214' N
NNG-D06	002° 13.894' W	56° 14.179' N	NNG-A19	002° 20.015' W	56° 16.490' N
NNG-D05	002° 13.417' W	56° 13.744' N	NNG-A15	002° 19.484' W	56° 15.474' N
NNG-D03	002° 12.421' W	56° 12.828' N	NNG-F01	002° 09.915' W	56° 12.079' N
NNG-E18	002° 16.122' W	56° 17.324' N	NNG-H11	002° 11.513' W	56° 16.740' N
NNG-E16	002° 15.658' W	56° 16.874' N	NNG-H09	002° 11.027' W	56° 16.263' N
NNG-E12	002° 14.720' W	56° 16.029' N	NNG-H08	002° 10.555' W	56° 15.808' N
NNG-E02	002° 11.251' W	56° 12.829' N	NNG-H06	002° 10.079' W	56° 15.324' N
NNG-OSS-N	002° 15.193' W	56° 16.446' N	NNG-OSS-S	002° 14.395' W	56° 14.615' N

Description (NtM 188 Rev 2.0)		
<p>Mariners are advised that maintenance has been completed at the four acoustic monitoring devices deployed within the Neart na Gaoithe Wind Farm Area and surrounding waters, shown in Figure 1.</p> <p>The acoustic monitoring devices are collecting real-time noise measurements for a period of 48 months. The devices will be inspected and maintained at least every four months.</p>		
Vessels	Type / Role	Timescales
Tranquillity S	Guard vessel	Guard vessels are currently on-site supporting construction activities.
Seagull	Guard vessel	Guard vessels are currently on-site supporting construction activities.
Area		
Project Location: Wind Farm Area, shown in Table 1 and Figure 1		

3 Ongoing Operations

This section outlines the ongoing operations in the Project Areas, for full details regarding the activity, the applicable Notice to Mariners (NtM) can be found on our website at <https://nngoffshorewind.com/resources/>.

3.1 Guard Vessels

SFF Services has been appointed by NnGOWL to provide guard vessels during the construction of NnG Offshore Wind Farm. Apart from times of extreme weather, there will always be at least one guard vessel on site, to cover the Wind Farm Area. There is also currently at least one guard vessel on the Export Cable Corridor until works are complete. The guard vessel's primary duty is security of the construction site by informing and warning non-construction vessels of the

ongoing activities and associated Safety Zones. The guard vessels present on site as of the date of issue, are shaded in blue in Table 4. The guard vessel details are provided in Section 8.1.

Table 4 - Guard Vessel Project Rotation

Guard Vessel	Start Date	End Date	Guard Vessel Area
Seagull	26/03/2023	16/04/2023	Wind Farm Area
Tranquillity	16/04/2023	07/05/2023	Wind Farm Area

3.2 Pile Installation

Description (NtM 148 Rev 4.0)		
<p>In preparation for jacket substructure installation, three piles at each wind turbine location and offshore substation platform will be installed. The Saipem (<i>S3000</i>) (call sign: C6SW6) is installing piles into pre-drilled sockets. The <i>Normand Navigator</i> (call sign: LASG7) will transfer supporting materials and installation equipment between positions on the seabed adjacent to each foundation location. On arrival at each location, the S3000 will collect and utilise this wet-stored equipment during pile installation. Once the three piles have been positioned within the pre-drilled sockets, grout will be inserted to secure them in place.</p> <p>The supply vessel <i>Rem Supporter</i> (call sign: 5BCN3), will be utilised to transport piles to NnG wind farm, as required. The 500m static fishing gear exclusion zone around the Wind Farm Area remains, as shown in Figure 2 and Table 2. Further details of the vessels involved in the works is provided in Section 8.2.</p>		
Vessels	Type / Role	Timescales
S3000	Installation Vessel	The pile installation work is anticipated to be completed in 2023.
Normand Navigator	Offshore Construction Vessel	
Rem Supporter	Offshore Supply Vessel	
Area		
<p>Project Location: Wind Farm Area, shown in Table 1 and Figure 1</p> <p>Operational Port: Blyth. On occasion the <i>S3000</i> will transit to a location near to the Isle of May to complete pile transfers from the <i>Rem Supporter</i>.</p>		

3.3 South Offshore Substation Commissioning

Description (NtM 177 Rev 9.0)
<p>Mariners are advised that Neart na Gaoithe Offshore Wind Farm Limited (NnGOWL) that commissioning works of the South offshore substation is currently ongoing within the NnG Wind Farm Area.</p> <p>Personnel are being transported to and from the South OSS topside by Crew Transfer Vessel (CTV) the <i>Rix Lion</i> (call sign: 2HOH3).</p> <p>The <i>MMS Supreme</i> (call sign: 2HGZ5) vessel will be replacing the <i>MCS Kaver</i> vessel (call sign: 2GMB8) as additional crew transfer vessel, if required commencing 26th March 2023. Further details of the vessels involved in the works is provided in Section 8.3.</p>

Description (NtM 177 Rev 7.0)		
<p>The <i>CTV Rix Lion</i> (call sign: 2HOH3) will continue to support the South offshore substation commissioning activities and will also support the North offshore substation commissioning activities as required.</p> <p>Further details of the vessels involved in the works is provided in Section 8.3.</p>		
Vessels	Type / Role	Timescales
VOS Stone	Offshore Supply Ship	The commissioning works is anticipated to continue throughout summer 2023.
Rix Lion	Crew Transfer Vessel	
Area		
<p>Project Location: Wind Farm Area, shown in Table 1 and Figure 1</p> <p>Operational Port: Blyth. Upon adverse weather conditions, vessels will seek shelter either around Isle of May or within the Firth of Forth.</p>		

4 Planned Works

Description (NtM 187 Rev 4.0)
<p>Mariners are advised that Neart na Gaoithe Offshore Wind Farm Limited (NnGOWL) are due to conduct a pre-lay grapnel run (PLGR) and commence of cable lay out for the first campaign of six inter-array cables, and one interconnector between the two offshore substations (OSS), within the Neart na Gaoithe Offshore Wind Farm site. The works are due to begin on the 29th of March, at the earliest.</p> <p>The PLGR will be completed by the vessel <i>BB Ocean</i> (call sign: LFBI) using a grapnel towed from the vessel. The grapnel will be deployed to detect and remove surface debris located on the inter-array cable routes, and at the wind turbine, offshore substation topside and jack-up locations. Debris caught by the grapnel will be recovered to deck and retained on board the vessel for disposal onshore. Should fishing gear be caught, efforts will be taken to identify ownership and return. The PLGR works are due to begin on the 29th of March, at the earliest.</p> <p>A Cable Lay Vessel, the <i>Viking Neptun</i> (call sign: LAYH7), will lay the inter-array cable onto the seabed following the sequence shown in Figure 2 and Table 2. The same operation will be repeated at all locations including the interconnector between the two OSS. The inter-array cables are connected to the substations in 6 loops (3 per OSS), whereas a single interconnector connects OSS-S to OSS-N. The laid inter-array and interconnector cables will be left unburied and unprotected on the seabed until July 2023.</p> <p>The <i>Horizon Enabler</i> (call sign: 8PBK2) walk to work vessel will support these operations. More details of all the vessels can be found below. Details of the crew transfer vessel will be updated in a subsequent NtM.</p> <p>This is the first campaign of PLGR and inter-array cables lay out. Future campaigns will commence between July and November 2023. Cables laid in subsequent campaigns are expected to be buried immediately following installation. Further information about these campaigns will be issued in subsequent NtMs.</p>

Description (NtM 187 Rev 4.0)		
Vessels	Type / Role	Timescales
Horizon Enabler	Survey Vessel	The MBES survey works completed on the 10 th of March 2023 . PLGR works are anticipated to commence on the 28 th of March 2023, at the earliest. .
BB Ocean	Anchor Handling Vessel	The PLGR works are due to begin on the 29 th of March, at the earliest and last for 1 day.
Viking Neptun	Cable Lay Vessel	Cable installation works to commence on the 10 th of April 2023, at the earliest.
Area		
Project Location: Wind Farm Area, shown in Table 1 and Figure 1		

Description (NtM 185 Rev 2.0)		
<p>Mariners are advised that the lights and AIS on the North and East cardinal marker buoys located around the boundaries of the Neart na Gaoithe Offshore Wind Farm and surrounding waters are currently not operational. Repair works will be carried out from the 5th of April, at the earliest using the Cameron vessel (call sign: MYEK6) and is expected to last for 5 days, weather dependant.</p> <p>The buoys have been deployed for the duration of the construction of Neart na Gaoithe Offshore Wind Farm.</p>		
Vessels	Type / Role	Timescales
Cameron	Mooring vessel	Repair works will be carried out from the 5th of April, at the earliest
Area		
Project Location: Wind Farm Area, shown in Table 1 and Figure 1		
Operational Port: likely Burntisland UK		

5 General Safety Advice

All vessels engaged in the construction activity will exhibit appropriate lights and shapes prescribed by the International Regulations for Preventing Collisions at Sea; relative to their operations. All vessels engaged in the activity will also transmit an Automatic Identification System (AIS) message. Mariners are requested to navigate with caution and keep continued watch on VHF Ch. 16, when navigating the area.

Please be aware that by virtue of their mode of operation and the equipment deployed vessels will be Restricted in their Ability to Manoeuvre (RAM) as defined under COLREGs (International Regulations for Preventing Collisions at Sea 1972, Rule 3). Masters of vessels are therefore requested to maintain their vessels and gears at a minimum safe distance from

these vessels of 500 metres when it is undertaking its work and showing the appropriate shapes and lights in accordance with COLREGs Rule 18.

Use of Safety Zones within the Neart na Gaoithe Offshore Wind Farm Construction Area is as follows:

- Mandatory “rolling” 500 metres (m) Safety Zones will be established around each wind farm structure (turbines and Offshore Substation Platforms (OSP)) and/or their foundations whilst construction works are in progress, as indicated by the presence of a construction vessel. Up to ten of these Safety Zones may be active at any given time.

The duty Guard Vessels and Marine Coordination Centre will be responsible for monitoring and policing the Safety Zones; and can be contacted directly for advice. Users are advised to keep clear of construction activities, including Safety Zones.

6 Fisheries Liaison

Fisheries liaison associated with the activity will be co-ordinated by the Company Fisheries Liaison Officer. For any commercial fishery queries please contact: Peter Berney, telephone: +44 (0)7391 402387 or email: NnG.FLO@naturalpower.com. An Offshore Fisheries Liaison Officer is present on the *Saipem 3000* and can be contacted on Ch16. For any other general queries please contact info@nngoffshorewind.com.


7 Marine Coordination Contact Details






The following contact can provide more information if required. Please note that specific queries can also be addressed to the relevant vessel or shore-based representative. The contact details for the marine coordination centre are indicated in Table 5.

Table 5 – Marine Coordination Contact Details



Telephone number (daytime operations):	+44 (0)7508421406 / +44 (0)1890 751415
Emergency contact (24/7):	+44 (0)7508421406 / +44 (0)1890 751415
Email:	nng.mc@smchse.com
Address:	NnG Offshore Wind Farm Marine Coordination Centre Gunsreen Basin Eyemouth TD14 5SD

8 Vessels Associated with the Activity

Vessel	Vessel Function	Vessel Contact Details	Vessel Information
8.1 Guard Vessels			
Tranquillity S 	Guard Vessel	Contact Name: Greg Wood Email: G.Wood@ssf.co.uk Phone: +44 (0) 780 389 4733 (24hr)	Call sign: MJUH9 IMO: N/A MMSI: 235053837
Seagull	Guard Vessel	Contact name: Vessel Master Email: seagullbf74@gmail.com Phone: +44 (0) 1261 878040 / +44 (0) 7895 919100	Call sign: MVBO2 IMO: 9112545

Vessel	Vessel Function	Vessel Contact Details	Vessel Information
			MMSI: 233714000
8.2 Pile Installation			
<p>Saipem 3000 (S3000)</p> 	Pile Installation	<p>Contact name: Vessel Master</p> <p>Email: captain.s3000@saipem.com</p> <p>Phone: +39 02 010 24650</p>	<p>Call sign: C6SW6</p> <p>IMO: 8309165</p> <p>MMSI: 311516000</p>
<p>Normand Navigator</p> 	<p>Type: Offshore Supply Vessel (OSV)</p> <p>Function: Offshore Construction Support</p>	<p>Contact name: Master of Normand Navigator</p> <p>Email: master@navigator.solstad.com</p> <p>Phone (Iridium) : +881677102711</p>	<p>Call sign: LASG7</p> <p>IMO: 9687356</p> <p>MMSI: 257794000</p>
<p>Rem Supporter</p> 	<p>Type: Platform Supply Vessel (PSV)</p> <p>Function: Transport supplies to NnG offshore wind farm.</p>	<p>Contact name: Master of Rem Supporter</p> <p>Email: captain@supporter.remoffshore.no</p> <p>Phone (FBB) : +870773946639</p>	<p>Call sign: 5BCN3</p> <p>IMO: 9482330</p> <p>MMSI: 209051000</p>
8.3 Offshore Substation Commissioning			
<p>Rix Lion</p> 	CTV	<p>Contact name: Ships Master (Will be rotated with shifts)</p> <p>Email: rix.lion@rix.co.uk</p> <p>Phone: +447702 975599</p>	<p>Call sign: 2HOH3</p> <p>IMO: 9745706</p> <p>MMSI: 235105282</p>
<p>MMS Supreme</p>	CTV	Contact name: Master	<p>Call sign: 2HGZ5</p>

Vessel	Vessel Function	Vessel Contact Details	Vessel Information
		<p>Email: mmssupreme@mms-offshore.co.uk</p> <p>Phone: +44 (0) 7741 576 452</p>	<p>MMSI: 235103595</p> <p>IMO: 9741073</p>
<p>VOS Stone</p> 	Offshore Supply Ship	<p>Contact name: Master Onboard</p> <p>Mobile: +31 629584362</p> <p>V-Sat (Bridge): +31 858886069</p> <p>Iridium (Bridge): +88 1677104825</p> <p>E-mail: bridge@vosstone.fleetvroom.com</p>	<p>Call sign: PBMW</p> <p>IMO: 9730517</p> <p>MMSI: 244030181</p>
8.4 Commencement of Drilling and Casing Installation			
<p>Blue Tern</p> 	Jack-up Vessel	<p>Contact name: Blue Tern Master</p> <p>Email: master.blm@fredolsen.com</p> <p>Phone: +47 5100 5334 or +47 5120 6200</p>	<p>Call sign: 9HA5208</p> <p>IMO: 9598737</p> <p>MMSI: 215644000</p>
8.5 PLGR Works and Cable Installation for April IAC Campaign			
<p>Horizon Enabler</p> 	Walk to Work Vessel	<p>Contact name: Mobile Captain</p> <p>Email: Captain.enabler@horizonmaritime.com</p> <p>Phone: +1 (709) 770 8383</p>	<p>Call sign: V7A4270</p> <p>IMO: 9723667</p> <p>MMSI: 538009069</p>
<p>BB Ocean</p> 	Anchor Handling Vessel	<p>Contact name: Mobile Captain</p> <p>Email: bbocean.skipper@bube.no / bbocean@bube.no</p> <p>Phone: +47 9018 8588</p>	<p>Call sign: LFBI</p> <p>IMO: 9196503</p> <p>MMSI: 258825000</p>
<p>Viking Neptun</p>	Cable Lay Vessel	<p>Contact name: Mobile Captain</p>	<p>Call sign: LAYH7</p>

Vessel	Vessel Function	Vessel Contact Details	Vessel Information
 <p><small>© Bernard Dumont MarineTraffic.com</small></p>		<p>Email: Captain.VikingNeptun@deme-group.com/ Bridge.VikingNeptun@deme-group.com Phone: +47 9746 9156</p>	<p>IMO: 9664902 MMSI: 258789000</p>
<p>8.6 Cardinal Marker Buoy Repair Works</p>			
 <p><small>© David Meek MarineTraffic.com</small></p>	<p>Mooring vessel</p>	<p>Contact name: Malcolm Duncan Email: MDuncan@briggsmarine.com Phone: +44 (0) 7711 373 209</p>	<p>Call sign MYEK6 MMSI: 232004102</p>