

Date of issue:	23/09/2022
Period covered:	21/09/2022 – 28/09/2022
Notice number:	111
Author:	Claire Gilchrist (claire.gilchrist@nngoffshorewind.com)

Construction of the Neart na Gaoithe (NnG) Offshore Wind Farm is ongoing. This notice is updated weekly giving information on the progress and resources involved in the offshore works. The intention is to give an overview of activities and vessels involved. Questions regarding the operations are welcomed.

Current works include;

1. Guard vessel duties (Section 3.1)
2. Pile Installation (Section 0)
3. South Offshore Substation Commissioning (Section 3.3)
4. Foundation Drilling and Casing Installation (Section 3.4)
5. NnG Waverider Buoys Maintenance Works (Section 3.5)

1 Project Location

The following tables and figures illustrate the boundaries, safety zones and exclusions applicable to the Neart na Gaoithe wind farm area and export cable corridor.

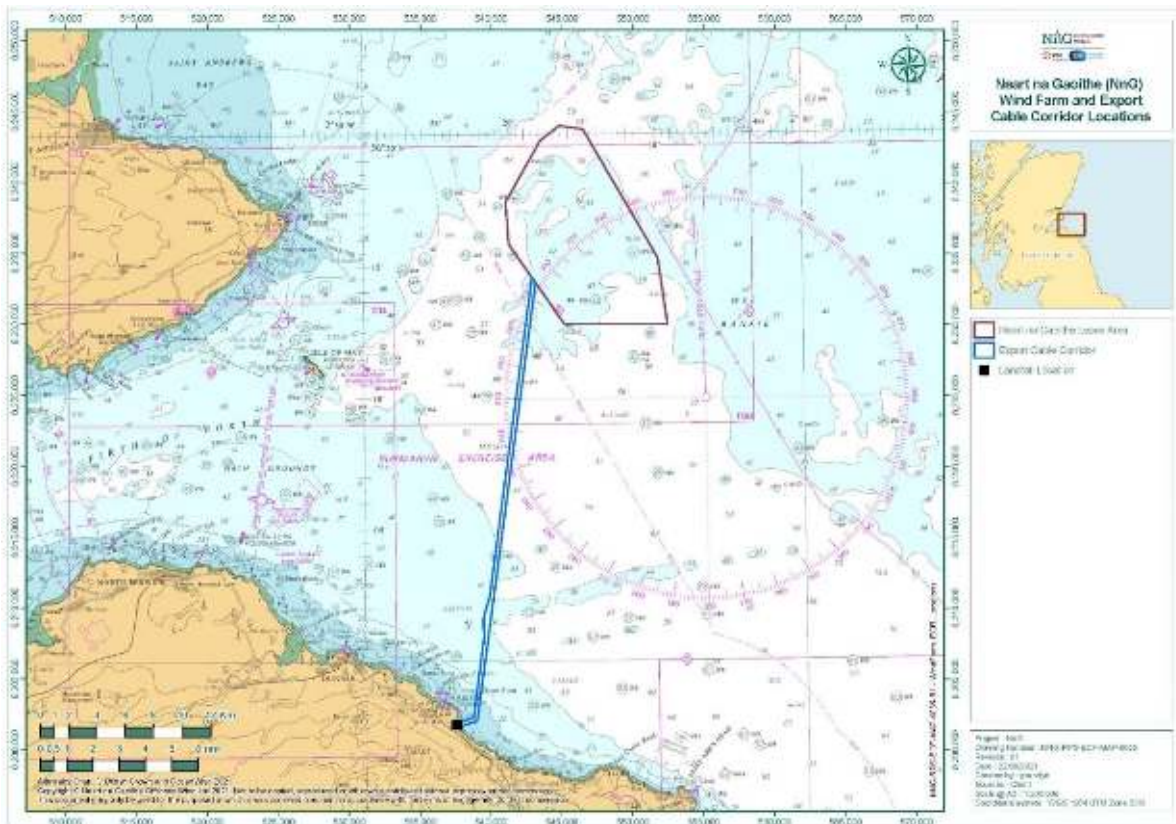


Figure 1 - Wind Farm Area and Export Cable

Table 1 - Wind Farm Area and Export Cable Coordinates

Wind Farm Area Coordinates (WGS84)	
LONGITUDE (DDM)	LATITUDE (DDM)
002° 09.898' W	56° 15.271' N
002° 09.255' W	56° 12.721' N
002° 13.998' W	56° 12.752' N
002° 16.293' W	56° 12.766' N
002° 19.628' W	56° 15.479' N
002° 20.055' W	56° 15.827' N
002° 20.232' W	56° 17.430' N
002° 17.826' W	56° 19.752' N
002° 16.518' W	56° 20.312' N
002° 14.910' W	56° 20.171' N

Export Cable Corridor Coordinates (WGS84)	
LONGITUDE (DDM)	LATITUDE (DDM)
2° 22.472' W	55° 57.734' N
2° 23.539' W	55° 57.541' N
2° 23.802' W	55° 57.584' N
2° 23.820' W	55° 57.609' N
2° 23.636' W	55° 57.693' N
2° 22.729' W	55° 57.866' N
2° 21.938' W	56° 00.990' N
2° 21.951' W	56° 01.007' N
2° 22.005' W	56° 01.449' N
2° 22.004' W	56° 01.552' N
2° 21.932' W	56° 01.795' N
2° 21.563' W	56° 02.468' N
2° 18.479' W	56° 14.546' N
2° 18.237' W	56° 14.349' N

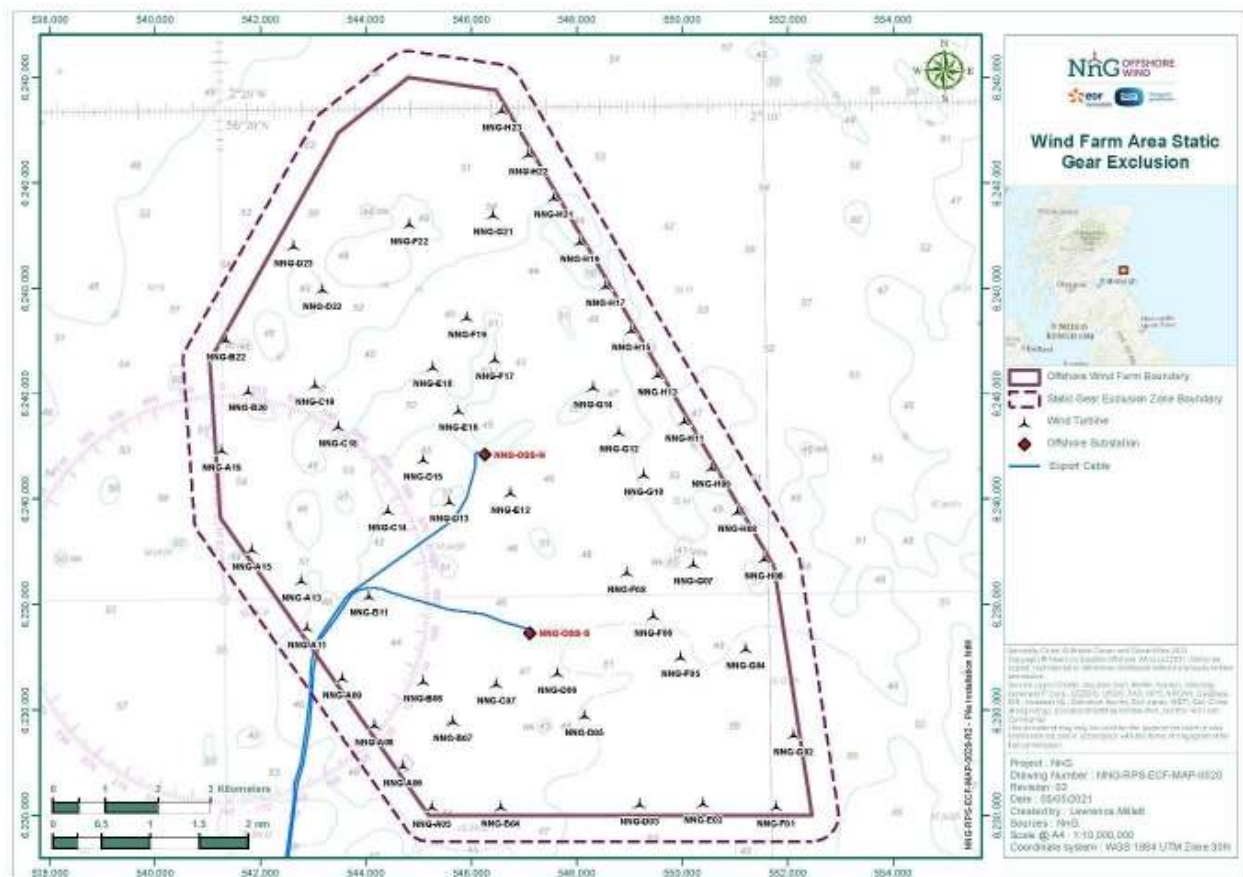


Figure 2 - Wind Farm Area Static Fishing Gear Exclusion

Table 2 - Wind Farm Area Static Fishing Gear Exclusion Coordinates

Longitude (DDM)	Latitude (DDM)
002° 20.566' W	56° 15.680' N
002° 20.849' W	56° 17.468' N
002° 18.242' W	56° 19.938' N
002° 16.611' W	56° 20.613' N
002° 14.363' W	56° 20.392' N
002° 09.300' W	56° 15.334' N
002° 08.661' W	56° 12.651' N
002° 09.058' W	56° 12.405' N
002° 16.505' W	56° 12.410' N

Figure 3 - Nearshore export cable safe advisory avoidance area (in red)

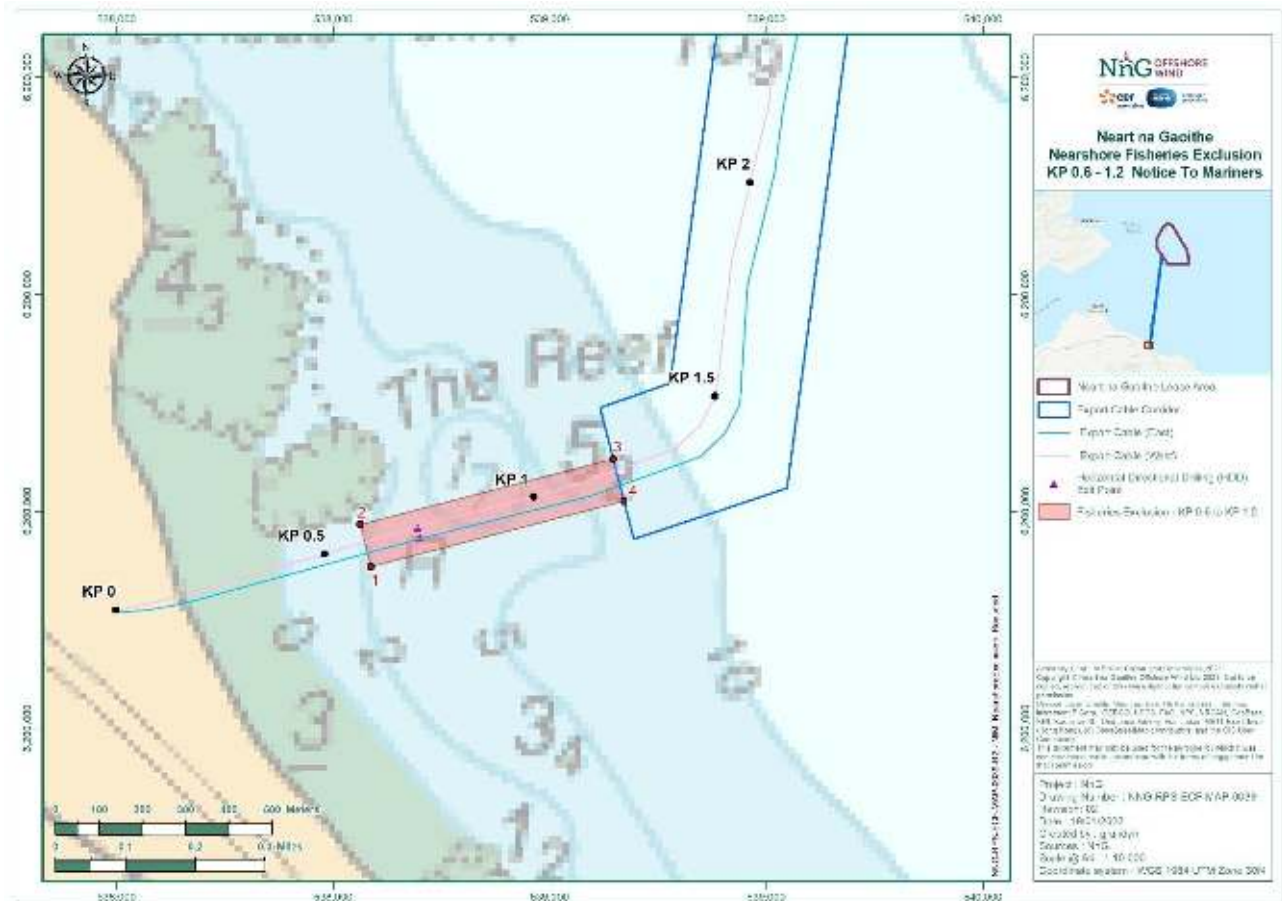


Table 3 - Nearshore export cable safe advisory avoidance area Coordinates

LATITUDE (DDM)	LONGITUDE (DDM)
55° 57.641127' N	2° 23.396185' W
55° 57.693431' N	2° 23.419463' W
55° 57.772190' N	2° 22.856882' W
55° 57.719884' N	2° 22.833616' W

2 Completed Operations

2.1 Foundations Installation

Casing and pile installation operations have been successfully completed at the orange shaded locations listed in Table 4. Casing only installation operations have been completed at the grey shaded locations and locations where jacket installation has been completed are shaded green. More information can be found at: <https://nngoffshorewind.info/>.

Table 4 – Centre coordinates of Turbine Locations and Offshore Substation Platforms with completed locations shaded

ID	LONGITUDE (DD.MM.MMM)	LATITUDE (DD.MM.MMM)	TURBINE ID	LONGITUDE (DD.MM.MMM)	LATITUDE (DD.MM.MMM)
NNG-A13	002° 18.580' W	56° 15.153' N	NNG-F22	002° 16.536' W	56° 18.785' N
NNG-A11	002° 18.489' W	56° 14.668' N	NNG-F19	002° 15.487' W	56° 17.828' N
NNG-A09	002° 17.845' W	56° 14.153' N	NNG-F17	002° 14.978' W	56° 17.394' N
NNG-A08	002° 17.267' W	56° 13.665' N	NNG-F08	002° 12.603' W	56° 15.198' N
NNG-A06	002° 16.755' W	56° 13.248' N	NNG-F06	002° 12.129' W	56° 14.751' N
NNG-A05	002° 16.231' W	56° 12.822' N	NNG-F05	002° 11.632' W	56° 14.330' N
NNG-B22	002° 19.921' W	56° 17.623' N	NNG-G21	002° 14.988' W	56° 18.873' N
NNG-B20	002° 19.521' W	56° 17.097' N	NNG-G14	002° 13.181' W	56° 17.095' N
NNG-B11	002° 17.341' W	56° 14.989' N	NNG-G12	002° 12.715' W	56° 16.640' N
NNG-B08	002° 16.365' W	56° 14.109' N	NNG-G10	002° 12.270' W	56° 16.197' N
NNG-B07	002° 15.822' W	56° 13.695' N	NNG-G07	002° 11.379' W	56° 15.279' N
NNG-B04	002° 14.964' W	56° 12.817' N	NNG-G04	002° 10.435' W	56° 14.405' N
NNG-C19	002° 18.293' W	56° 17.155' N	NNG-G02	002° 09.572' W	56° 13.520' N
NNG-C18	002° 17.882' W	56° 16.725' N	NNG-H23	002° 14.806' W	56° 19.943' N
NNG-C14	002° 16.984' W	56° 15.858' N	NNG-H22	002° 14.322' W	56° 19.488' N
NNG-C07	002° 15.017' W	56° 14.076' N	NNG-H21	002° 13.865' W	56° 19.043' N
NNG-D23	002° 18.666' W	56° 18.572' N	NNG-H19	002° 13.397' W	56° 18.588' N
NNG-D22	002° 18.135' W	56° 18.127' N	NNG-H17	002° 12.932' W	56° 18.134' N
NNG-D15	002° 16.321' W	56° 16.376' N	NNG-H15	002° 12.466' W	56° 17.677' N
NNG-D13	002° 15.848' W	56° 15.946' N	NNG-H13	002° 11.997' W	56° 17.214' N
NNG-D06	002° 13.894' W	56° 14.179' N	NNG-A19	002° 20.015' W	56° 16.490' N
NNG-D05	002° 13.417' W	56° 13.744' N	NNG-A15	002° 19.484' W	56° 15.474' N
NNG-D03	002° 12.421' W	56° 12.828' N	NNG-F01	002° 09.915' W	56° 120790' N
NNG-E18	002° 16.122' W	56° 17.324' N	NNG-H11	002° 11.513' W	56° 16.740' N
NNG-E16	002° 15.658' W	56° 16.874' N	NNG-H09	002° 11.027' W	56° 16.263' N
NNG-E12	002° 14.720' W	56° 16.029' N	NNG-H08	002° 10.555' W	56° 15.808' N
NNG-E02	002° 11.251' W	56° 12.829' N	NNG-H06	002° 10.079' W	56° 15.324' N
NNG-OSS-N	002° 15.193' W	56° 16.446' N	NNG-OSS-S	002° 14.395' W	56° 14.615' N

3 Ongoing Operations

This section outlines the ongoing operations in the Project Areas, for full details regarding the activity, the applicable Notice to Mariners (NtM) can be found on our website at <https://nngoffshorewind.com/resources/>.

3.1 Guard Vessels

SFF Services has been appointed by NnGOWL to provide guard vessels during the construction of NnG Offshore Wind Farm. Apart from times of extreme weather, there will always be at least one guard vessel on site, to cover the Wind Farm Area. There is also currently at least one guard vessel on the Export Cable Corridor until works are complete. The guard vessel’s primary duty is security of the construction site by informing and warning non-construction vessels of the ongoing activities and associated Safety Zones. The guard vessels present on site as of the date of issue, are shaded in blue in Table 5. The guard vessel details are provided in Section 8.1.

Table 5 - Guard Vessel Project Rotation

Guard Vessel	Start Date	End Date	Guard Vessel Area
Seagull	01/10/2022	20/10/2022	Wind Farm Area
Tranquillity	17/09/2022	01/10/2022	Wind Farm Area
Genesis	28/08/2022	28/09/2022	Cable Route

3.2 Pile Installation

Description (NtM 148 Rev 2.0)		
<p>In preparation for the jacket foundation installation, three piles for each wind turbine location and offshore substation platform will be installed. The piles are being installed by the <i>Saipem 3000 (S3000)</i> (call sign: C6SW6) into pre-drilled sockets. Pile installation support is provided by the <i>Normand Navigator</i> offshore construction vessel.</p> <p>A supply vessel is engaged to transport piles to NnG wind farm, <i>Rem Supporter</i>. A Crew Transfer Vessel may also be used to support operations, <i>Pegasus</i> (call sign V2ED2). The 500m static fishing gear exclusion zone around the Wind Farm Area remains, as shown in Figure 2 and Table 2. Further details of the vessels involved in the works is provided in Section 8.2.</p>		
Vessels	Type / Role	Timescales
Saipem 3000	Pile Installation Vessel	The pile installation work is anticipated to be completed in 2022.
Normand Navigator	Offshore Construction Vessel	
Rem Supporter	Platform Supply Vessel	
Pegasus	Crew Transfer Vessel	

Description (NtM 148 Rev 2.0)
Area
<p>Project Location: Wind Farm Area, shown in Table 1 and Figure 1</p> <p>Operational Port: Blyth. On occasion the S3000 will transit to a location near to the Isle of May to complete pile transfers from the Peak Belfast.</p>

3.3 South Offshore Substation Commissioning

Description (NtM 177 Rev 4.0)		
<p>Mariners are advised that NnGOWL has commenced commissioning of the South offshore substation topside within the NnG Wind Farm Area.</p> <p>Personnel are being transported to and from the South OSS topside by Crew Transfer Vessel (CTV) the <i>Rix Lion</i> (call sign: 2HOH3). There is also a CTV in the field to assist with personnel transfer as required, Forth Engineer (call sign: 2HAL3). Further details of the vessels involved in the works is provided in Section 8.3.</p>		
Vessels	Type / Role	Timescales
Rix Lion	CTV	OSS commissioning commenced in early June and will continue throughout Summer 2022.
Forth Engineer	CTV	
Area		
	LONGITUDE (DD.MM.MMM)	LATITUDE (DD.MM.MMM)
NNG-OSS-S	002° 14.395' W	56° 14.615' N

3.4 Commencement of Drilling and Casing Installation

Description (NtM 178 Rev 2.0)
<p>Mariners are advised that NnGOWL has commenced drilling operations and casing installation within the Neart Na Gaoithe (NnG) Wind Farm Area.</p> <p>Three sockets will be drilled into the seabed and three steel casings installed at each wind turbine location, to in turn enable pile and jacket installation. Ahead of drilling commencing, the S3000 (call sign: C6SW6) will place a subsea template on the seabed, to guide drilling. Drilling and casing installation will then be undertaken from the Blue Tern (call sign: 9HA5208). Drilling operations and casing installation will be supported by the Skandi Acergy (call sign: LAFD7) as required.</p> <p>A crew transfer vessel Forth Engineer (call sign: 2HAL3) and supply vessel (Rem Supporter call sign: 2HAL3) may be utilised to transport personnel and casings during the campaign, as required.</p> <p>Further details of the vessels involved in the works is provided in Section 8.4.</p>

Vessels	Type / Role	Timescales
Blue Tern	Jack-up Vessel	The drilling and casing installation campaign is expected to continue through to 2023.
Saipem 3000	HLV	
Normand Navigator	OCV	
Rem Supporter	PSV	
Forth Engineer	CTV	
Area		
Project Location: Wind Farm Area, shown in Table 1 and Figure 1		
Operational Port: Blyth.		

3.5 NnG Waverider Buoys Maintenance Works

Description (NtM 182 Rev 2.0)		
Mariners are advised that NnGOWL has commenced maintenance works on the two Triaxys Waverider Buoys within the boundaries of the Neart na Gaoithe Offshore wind Farm . The work will take place using the Forth Drummer (Call sign: 2FIG9). The work commenced on the 14 th of September 2022 and will take up to two days. Further details of the vessels involved in the works is provided in Section 8.6.		
Vessels	Type / Role	Timescales
Forth Drummer	Multipurpose	The drilling and casing installation campaign commenced on 14 th of September and is in progress for completion by the end of the month.
Area		
Project Location: Wind Farm Area, shown in Table 7		

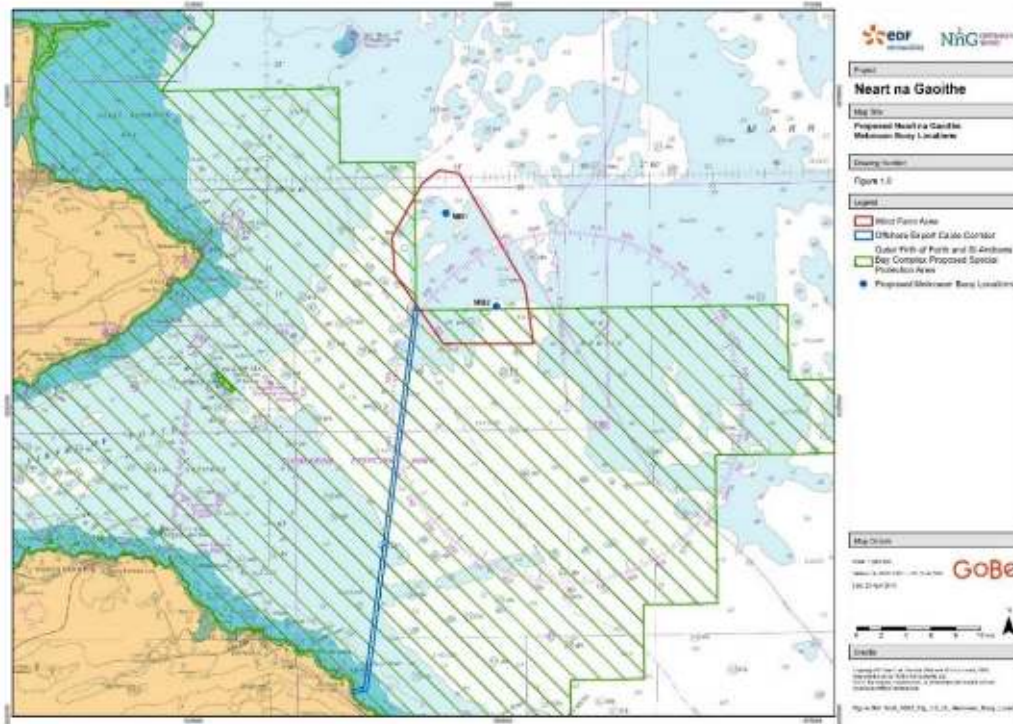


Figure 4- Wave Rider Buoy Location

Table 6- Triaxys Wave Rider Buoys Coordinates

Triaxys Waverider Buoy	Longitude (DDM) (WGS84)	Latitude (DDM) (WGS84)
MB 1 (North)	002° 15.989' W	56° 18.444' N
MB 2 (South)	002° 12.123' W	56° 14.357' N

4 Planned Operations

4.1 NnG Wind Turbine Jackets Installation

Description (NtM 183 Rev 1.0)
<p>Mariners are advised that NnGOWL is due to commence installation of the offshore wind turbine jackets within the Neart na Gaoithe Wind Farm Area. The work is due to begin 1st October 2022, at the earliest.</p> <p>The jackets will be brought directly to site from location of fabrication by the heavy load carrier <i>Xin Yao Hua</i> (call sign: 5LCD7) and installed by the <i>Balder</i> (call sign: 3EWK). Prior to jackets installation, the <i>Normand Navigator</i> (call sign: LASG7) will undertake pile cleaning and pre-jacket installation visual survey. Following jacket installation the <i>Normand Navigator</i> will grout the pile-jacket connections. Further details of the vessels involved in the works is provided in Section 8.6.</p>

Vessels	Type / Role	Timescales
DCV Balder	Heavy Lift Vessel/ WTG Jackets Installation	The installation campaign will commence on the 1 st October 2022.
Xin Yao Hua	Heavy Transport Vessel/ WTG Jackets Transportation	
Area		
Project Location: Wind Farm Area, shown in Section 8.7.		

5 General Safety Advice

All vessels engaged in the construction activity will exhibit appropriate lights and shapes prescribed by the International Regulations for Preventing Collisions at Sea; relative to their operations. All vessels engaged in the activity will also transmit an Automatic Identification System (AIS) message. Mariners are requested to navigate with caution and keep continued watch on VHF Ch. 16, when navigating the area.

Please be aware that by virtue of their mode of operation and the equipment deployed vessels will be Restricted in their Ability to Manoeuvre (RAM) as defined under COLREGs (International Regulations for Preventing Collisions at Sea 1972, Rule 3). Masters of vessels are therefore requested to maintain their vessels and gears at a minimum safe distance from these vessels of 500 metres when it is undertaking its work and showing the appropriate shapes and lights in accordance with COLREGs Rule 18.

Use of Safety Zones within the Neart na Gaoithe Offshore Wind Farm Construction Area is as follows:

- Mandatory “rolling” 500 metres (m) Safety Zones will be established around each wind farm structure (turbines and Offshore Substation Platforms (OSP)) and/or their foundations whilst construction works are in progress, as indicated by the presence of a construction vessel. Up to ten of these Safety Zones may be active at any given time.

The duty Guard Vessels and Marine Coordination Centre will be responsible for monitoring and policing the Safety Zones; and can be contacted directly for advice. Users are advised to keep clear of construction activities, including Safety Zones.

6 Fisheries Liaison

Fisheries liaison associated with the activity will be co-ordinated by the Company Fisheries Liaison Officer. For any commercial fishery queries please contact: Peter Berney, telephone: +44 (0)7391 402387 or email: NnG.FLO@naturalpower.com. An Offshore Fisheries Liaison Officer is present on the *Saipem 3000* and can be contacted on Ch16. For any other general queries please contact info@nngoffshorewind.com.





7 Marine Coordination Contact Details







The following contact can provide more information if required. Please note that specific queries can also be addressed to the relevant vessel or shore-based representative. The contact details for the marine coordination centre are indicated in Table 7.

Table 7 - Marine Coordination Contact Details

Telephone number (daytime operations):	+44 (0)7508421406 / +44 (0)1890 751415
Emergency contact (24/7):	+44 (0)7508421406 / +44 (0)1890 751415
Email:	nng.mc@smchse.com
Address:	NnG Offshore Wind Farm Marine Coordination Centre Gunsreen Basin Eyemouth TD14 5SD

8 Vessels Associated with the Activity

Vessel	Vessel Function	Vessel Contact Details	Vessel Information
8.1 Guard Vessels			
MV Genesis 	Guard Vessel	Contact name: Vessel Master Email: Genebf505@gmail.com spousefishing@gmail.com Phone: 01261 455 437	Call sign: MSDK3 IMO: 9060156 MMSI: 235000097
Morning Dawn 	Guard Vessel	Vessel Master Email: bridge@morning-dawn.co.uk Phone: + 33 640 047722 / +44 1779 400158	Call sign: MHEU3 IMO: 8701416 MMSI: 232253000
Seagull 	Guard Vessel	Contact name: Vessel Master Email: seagullbf74@gmail.com Phone: +44 (0) 1261 878040 / +44 (0) 7895 919100	Call sign: MVBO2 IMO: 9112545 MMSI: 233714000
8.2 Pile Installation			
Saipem 3000 (S3000) 	Pile Installation	Contact name: Vessel Master Email: captain.s3000@saipem.com Phone: +39 02 010 24650	Call sign: C6SW6 IMO: 8309165 MMSI: 311516000

Vessel	Vessel Function	Vessel Contact Details	Vessel Information
<p>Normand Navigator</p> 	<p>Type: Offshore Supply Ship</p> <p>Function: Offshore Construction Vessel</p>	<p>Contact name: Master of Normand Navigator</p> <p>Email: master@navigator.solstad.com</p> <p>Phone (Iridium) : +881677102711</p>	<p>Call sign: LASG7</p> <p>IMO: 9687356</p> <p>MMSI: 257794000</p>
<p>Rem Supporter</p> 	<p>Type: Platform Supply Vessel (PSV)</p> <p>Function: Transport supplies to NnG offshore wind farm.</p>	<p>Contact name: Master of Rem Supporter</p> <p>Email: captain@supporter.remoffshore.no</p> <p>Phone (FBB) : +870773946639</p>	<p>Call sign: 5BCN3</p> <p>IMO: 9482330</p> <p>MMSI: 209051000</p>
<p>Pegasus</p> 	<p>Crew Transfer Vessel</p>	<p>Contact name: Ben Stokes</p> <p>Email: Benjamin.Stokes@saipem.com</p> <p>Phone: +44 7833 479 546</p>	<p>Call sign: V2ED2</p> <p>IMO: 9433743</p> <p>MMSI: 305389000</p>
<h3>8.3 Offshore Substation Commissioning</h3>			
<p>Rix Lion</p> 	<p>CTV</p>	<p>Contact name: Ships Master (Will be rotated with shifts)</p> <p>Email: rix.lion@rix.co.uk</p> <p>Phone: +447702 975599</p>	<p>Call sign: 2HOH3</p> <p>IMO: 9745706</p> <p>MMSI: 235105282</p>
<p>Forth Engineer</p> 	<p>CTV</p>	<p>Contact name: Master Onboard</p> <p>Email: wpower@briggsmarine.com or sclarke@briggsmarine.com</p> <p>Phone: 07436 294283</p>	<p>Call sign: 2HAL3</p> <p>IMO: 9712747</p> <p>MMSI: 235102028</p>
<h3>8.4 Commencement of Drilling and Casing Installation</h3>			
<p>Blue Tern</p> 	<p>Jack-up Vessel</p>	<p>Contact name: Blue Tern Master</p> <p>Email: master.blbt@fredolsen.com</p> <p>Phone: +47 5100 5334 or +47 5120 6200</p>	<p>Call sign: 9HA5208</p> <p>IMO: 9598737</p> <p>MMSI: 215644000</p>

Vessel	Vessel Function	Vessel Contact Details	Vessel Information
8.5 Export Cable Hook Up Campaign			
EDT Protea 	SOV	Matthew Hart Project Manager mhart@briggsmarine.com	Call sign: P3KR9 IMO: 9019107 MMSI: 209255000
8.6 NnG Waverider Buoys Maintenance Works			
Forth Drummer 	Multipurpose Vessel	Contact Name: Ian Buchanan Email: mvdrummer@briggsmarine.com Phone: +44 (0) 7909 254 184	Call Sign: 2FIG9 IMO: 9676917
8.7 WTG Jackets Installation Works			
DCV Balder 	Heavy Lift Vessel/ WTG Jackets Installation	Contact name: Balder Mate Email: MATE@balder.hmc-heerema.com; Phone: +31 71 579 9002 (auto-forward via HMC Leiden telecom service) Fleet Broadband: +870 773 261 351 (Fleet Broadband. In case 870 is not working, please try 871, 872, 873, or 874)	Call Sign: 3EWK
Xin Yao Hua 	Heavy Lift Vessel/ WTG Jackets Transportation	Contact name: Xin Yao Hua Master Email: xinyaohua@fleetmail.inmarsat.com semisub.cssc@coscoshipping.com Phone: 870-773407924; 881-677117804	Call Sign: 5LCD7