

Date of issue:	29/07/2022
Period covered:	20/07/2022 – 03/07/2022
Notice number:	103
Author:	Claire Gilchrist (claire.gilchrist@nngoffshorewind.com)

**Construction of the Neart na Gaoithe (NnG) Offshore Wind Farm is ongoing. This notice is updated weekly giving information on the progress and resources involved in the offshore works. The intention is to give an overview of activities and vessels involved. Questions regarding the operations are welcomed.**

Current works include;

1. Guard vessel duties (Section 3.1)
2. Pile Installation (Section 3.2)
3. Installation of O&M Pontoons at Gunsreen Basin (Section 3.3)
4. South Offshore Substation Commissioning (Section 3.4)
5. Foundation Drilling and Casing Installation (Section 3.5)
6. Offshore Export Cable Hook Up Campaign (Section 3.6)

**1 Project Location**

The following tables and figures illustrate the boundaries, safety zones and exclusions applicable to the Neart na Gaoithe wind farm area and export cable corridor.

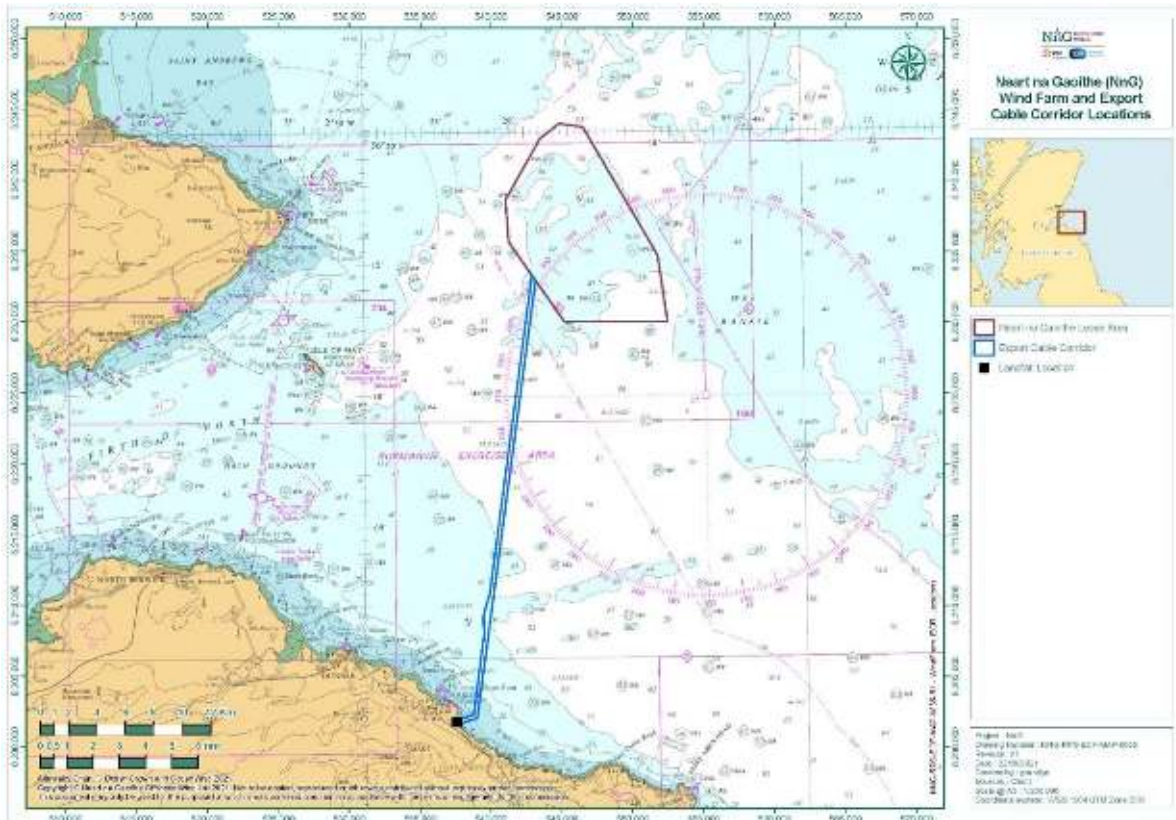


Figure 1 - Wind Farm Area and Export Cable

Table 1 - Wind Farm Area and Export Cable Coordinates

Wind Farm Area Coordinates (WGS84)	
LONGITUDE (DDM)	LATITUDE (DDM)
002° 09.898' W	56° 15.271' N
002° 09.255' W	56° 12.721' N
002° 13.998' W	56° 12.752' N
002° 16.293' W	56° 12.766' N
002° 19.628' W	56° 15.479' N
002° 20.055' W	56° 15.827' N
002° 20.232' W	56° 17.430' N
002° 17.826' W	56° 19.752' N
002° 16.518' W	56° 20.312' N
002° 14.910' W	56° 20.171' N

Export Cable Corridor Coordinates (WGS84)	
LONGITUDE (DDM)	LATITUDE (DDM)
2° 22.472' W	55° 57.734' N
2° 23.539' W	55° 57.541' N
2° 23.802' W	55° 57.584' N
2° 23.820' W	55° 57.609' N
2° 23.636' W	55° 57.693' N
2° 22.729' W	55° 57.866' N
2° 21.938' W	56° 00.990' N
2° 21.951' W	56° 01.007' N
2° 22.005' W	56° 01.449' N
2° 22.004' W	56° 01.552' N
2° 21.932' W	56° 01.795' N
2° 21.563' W	56° 02.468' N
2° 18.479' W	56° 14.546' N
2° 18.237' W	56° 14.349' N

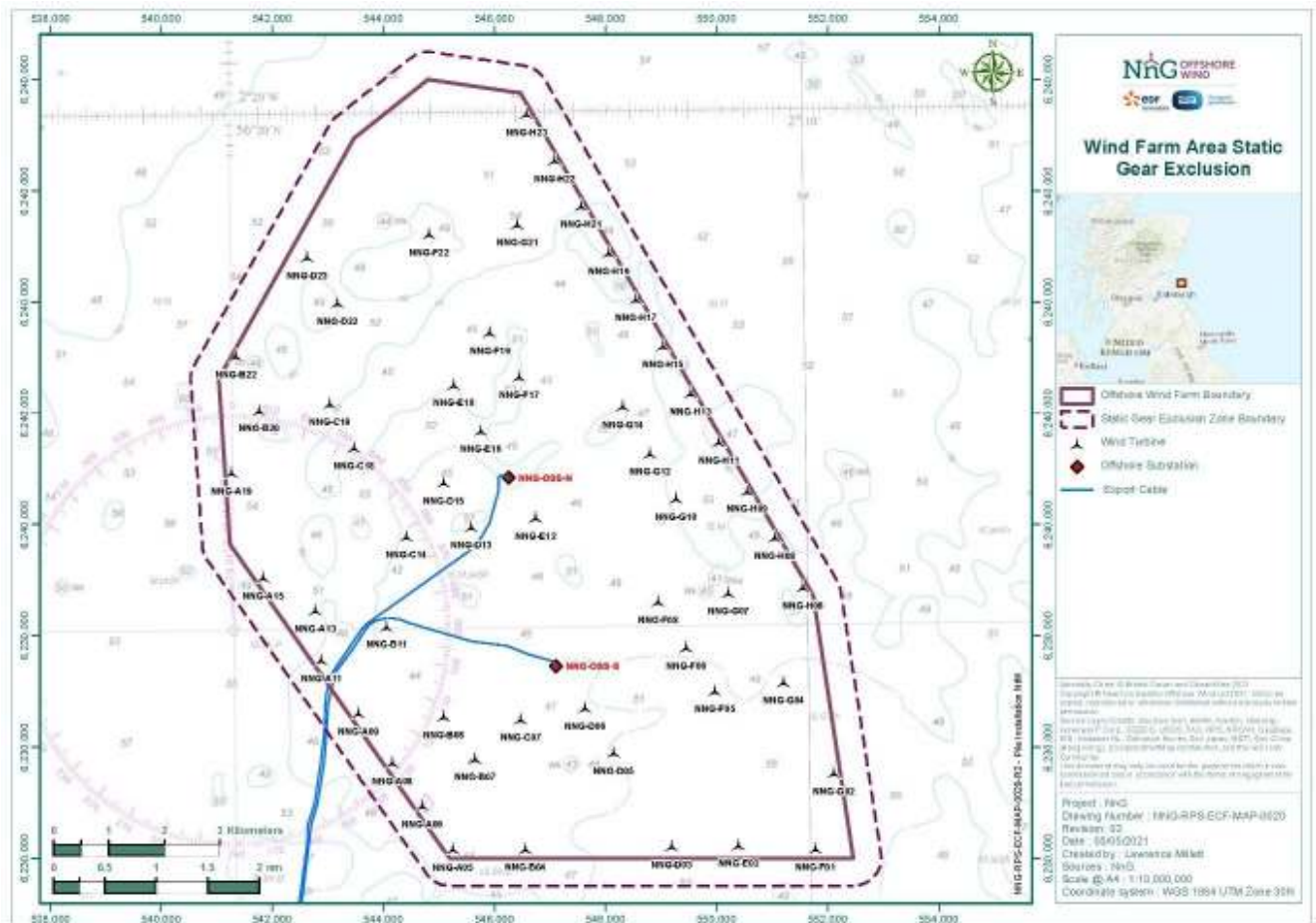


Figure 2 - Wind Farm Area Static Fishing Gear Exclusion

Table 2 - Wind Farm Area Static Fishing Gear Exclusion Coordinates

Longitude (DDM)	Latitude (DDM)
002° 20.566' W	56° 15.680' N
002° 20.849' W	56° 17.468' N
002° 18.242' W	56° 19.938' N
002° 16.611' W	56° 20.613' N
002° 14.363' W	56° 20.392' N
002° 09.300' W	56° 15.334' N
002° 08.661' W	56° 12.651' N
002° 09.058' W	56° 12.405' N
002° 16.505' W	56° 12.410' N

Figure 3 - Nearshore export cable safe advisory avoidance area (in red)

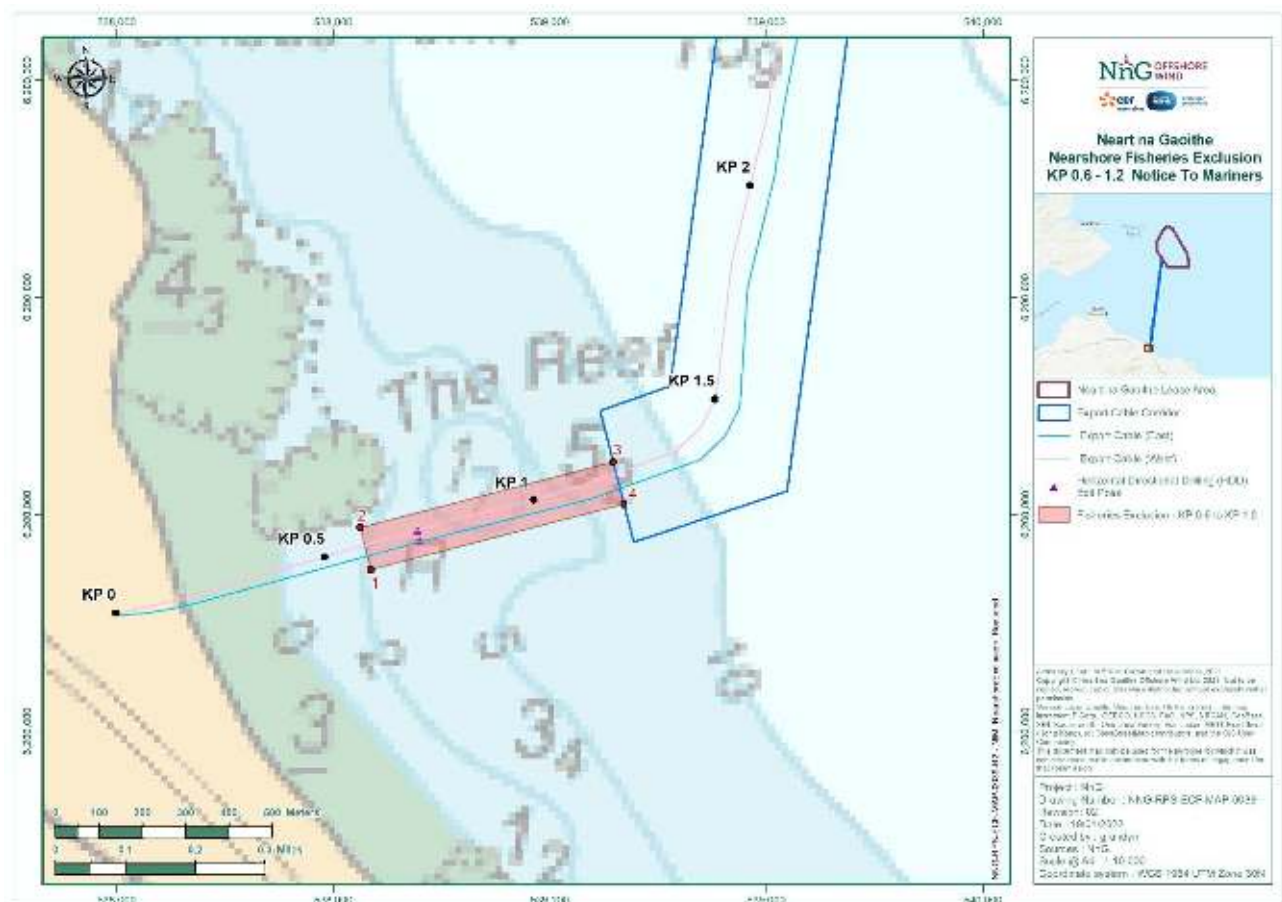


Table 3 - Nearshore export cable safe advisory avoidance area Coordinates

LATITUDE (DDM)	LONGITUDE (DDM)
55° 57.641127' N	2° 23.396185' W
55° 57.693431' N	2° 23.419463' W
55° 57.772190' N	2° 22.856882' W
55° 57.719884' N	2° 22.833616' W

## 2 Completed Operations

### 2.1 Foundations Installation

Casing and pile installation operations have been successfully completed at the orange shaded locations listed in Table 4. Casing only installation operations have been completed at the grey shaded locations and locations where jacket installation has been completed are shaded green. More information can be found at: <https://nngoffshorewind.info/>.

Table 4 – Centre coordinates of Turbine Locations and Offshore Substation Platforms with completed locations shaded

ID	LONGITUDE (DD.MM.MMM)	LATITUDE (DD.MM.MMM)	TURBINE ID	LONGITUDE (DD.MM.MMM)	LATITUDE (DD.MM.MMM)
NNG-A13	002° 18.580' W	56° 15.153' N	NNG-F22	002° 16.536' W	56° 18.785' N
NNG-A11	002° 18.489' W	56° 14.668' N	NNG-F19	002° 15.487' W	56° 17.828' N
NNG-A09	002° 17.845' W	56° 14.153' N	NNG-F17	002° 14.978' W	56° 17.394' N
NNG-A08	002° 17.267' W	56° 13.665' N	NNG-F08	002° 12.603' W	56° 15.198' N
NNG-A06	002° 16.755' W	56° 13.248' N	NNG-F06	002° 12.129' W	56° 14.751' N
NNG-A05	002° 16.231' W	56° 12.822' N	NNG-F05	002° 11.632' W	56° 14.330' N
NNG-B22	002° 19.921' W	56° 17.623' N	NNG-G21	002° 14.988' W	56° 18.873' N
NNG-B20	002° 19.521' W	56° 17.097' N	NNG-G14	002° 13.181' W	56° 17.095' N
NNG-B11	002° 17.341' W	56° 14.989' N	NNG-G12	002° 12.715' W	56° 16.640' N
NNG-B08	002° 16.365' W	56° 14.109' N	NNG-G10	002° 12.270' W	56° 16.197' N
NNG-B07	002° 15.822' W	56° 13.695' N	NNG-G07	002° 11.379' W	56° 15.279' N
NNG-B04	002° 14.964' W	56° 12.817' N	NNG-G04	002° 10.435' W	56° 14.405' N
NNG-C19	002° 18.293' W	56° 17.155' N	NNG-G02	002° 09.572' W	56° 13.520' N
NNG-C18	002° 17.882' W	56° 16.725' N	NNG-H23	002° 14.806' W	56° 19.943' N
NNG-C14	002° 16.984' W	56° 15.858' N	NNG-H22	002° 14.322' W	56° 19.488' N
NNG-C07	002° 15.017' W	56° 14.076' N	NNG-H21	002° 13.865' W	56° 19.043' N
NNG-D23	002° 18.666' W	56° 18.572' N	NNG-H19	002° 13.397' W	56° 18.588' N
NNG-D22	002° 18.135' W	56° 18.127' N	NNG-H17	002° 12.932' W	56° 18.134' N
NNG-D15	002° 16.321' W	56° 16.376' N	NNG-H15	002° 12.466' W	56° 17.677' N
NNG-D13	002° 15.848' W	56° 15.946' N	NNG-H13	002° 11.997' W	56° 17.214' N
NNG-D06	002° 13.894' W	56° 14.179' N	NNG-A19	002° 20.015' W	56° 16.490' N
NNG-D05	002° 13.417' W	56° 13.744' N	NNG-A15	002° 19.484' W	56° 15.474' N
NNG-D03	002° 12.421' W	56° 12.828' N	NNG-F01	002° 09.915' W	56° 120790' N
NNG-E18	002° 16.122' W	56° 17.324' N	NNG-H11	002° 11.513' W	56° 16.740' N
NNG-E16	002° 15.658' W	56° 16.874' N	NNG-H09	002° 11.027' W	56° 16.263' N
NNG-E12	002° 14.720' W	56° 16.029' N	NNG-H08	002° 10.555' W	56° 15.808' N
NNG-E02	002° 11.251' W	56° 12.829' N	NNG-H06	002° 10.079' W	56° 15.324' N
NNG-OSS-N	002° 15.193' W	56° 16.446' N	NNG-OSS-S	002° 14.395' W	56° 14.615' N



## 2.2 Maintenance of Acoustic Monitoring Devices

Description (NtM 180 Rev 3.0)
Mariners are advised that maintenance has been completed at the four acoustic monitoring devices deployed within the Neart na Gaoithe Wind Farm Area and surrounding waters.
Area
Project Location: Wind Farm Area, shown in Table 1 and Figure 1

## 3 Ongoing Operations

This section outlines the ongoing operations in the Project Areas, for full details regarding the activity, the applicable Notice to Mariners (NtM) can be found on our website at <https://nngoffshorewind.com/resources/>.

### 3.1 Guard Vessels

SFF Services has been appointed by NnGOWL to provide guard vessels during the construction of NnG Offshore Wind Farm. Apart from times of extreme weather, there will always be at least one guard vessel on site, to cover the Wind Farm Area. There is also currently at least one guard vessel on the Export Cable Corridor until works are complete. The guard vessel's primary duty is security of the construction site by informing and warning non-construction vessels of the ongoing activities and associated Safety Zones. The guard vessels present on site as of the date of issue, are shaded in blue in Table 5. The guard vessel details are provided in Section 8.1.

Table 5 - Guard Vessel Project Rotation

Guard Vessel	Start Date	End Date	Guard Vessel Area
Seagull	04/08/2022	27/08/2022	Wind Farm Area
Tranquillity	22/07/2022	04/08/2022	Wind Farm Area
Morning Dawn	23/07/2022	20/08/2022	Export Cable

### 3.2 Pile Installation

Description (NtM 148 Rev 1.0)		
<p>In preparation for the jacket foundation installation, three piles for each wind turbine location and offshore substation platform will be installed. The piles are being installed by the <i>Saipem 3000 (S3000)</i> (call sign: C6SW6) into pre-drilled sockets. Pile installation support is provided by the <i>Normand Navigator</i> offshore construction vessel.</p> <p>A supply vessel is engaged to transport piles to NnG wind farm, <i>Rem Supporter</i>. A Crew Transfer Vessel may also be used to support operations, <i>Pegasus</i> (call sign V2ED2). The 500m static fishing gear exclusion zone around the Wind Farm Area remains, as shown in Figure 2 and Table 2. Further details of the vessels involved in the works is provided in Section 8.2.</p>		
Vessels	Type / Role	Timescales
Saipem 3000	Pile Installation Vessel	The pile installation work is anticipated to be completed in 2022.
Normand Navigator	Offshore Construction Vessel	
Rem Supporter	Platform Supply Vessel	
Pegasus	Crew Transfer Vessel	

<b>Description (NtM 148 Rev 1.0)</b>
<b>Area</b>
Project Location: Wind Farm Area, shown in Table 1 and Figure 1
Operational Port: Blyth. On occasion the S3000 will transit to a location near to the Isle of May to complete pile transfers from the Peak Belfast.

### 3.3 Installation of Neart na Gaoithe O&M Pontoons at Gunsreen Basin

<b>Description (NtM 167 Rev 1.0)</b>		
Mariners are advised that NnGOWL is currently ongoing with installation of pontoons to support the operations and maintenance activities of NnG Offshore Wind Farm. The work commenced on Monday 29 <sup>th</sup> November 2021.		
<b>Vessels</b>	<b>Type / Role</b>	<b>Timescales</b>
NA	NA	Installation and commissioning works are planned to continue through to July 2022.

### 3.4 South Offshore Substation Commissioning

<b>Description (NtM 177 Rev 4.0)</b>		
Mariners are advised that NnGOWL has commenced commissioning of the South offshore substation topside within the NnG Wind Farm Area.		
Personnel are being transported to and from the South OSS topside by Crew Transfer Vessel (CTV) the <i>Rix Lion</i> (call sign: 2HOH3). There is also a CTV in the field to assist with personnel transfer as required, Forth Engineer (call sign: 2HAL3). Further details of the vessels involved in the works is provided in Section 8.3.		
<b>Vessels</b>	<b>Type / Role</b>	<b>Timescales</b>
Rix Lion	CTV	OSS commissioning commenced in early June and will continue throughout Summer 2022.
Forth Engineer	CTV	
<b>Area</b>		
	<b>LONGITUDE (DD.MM.MMM)</b>	<b>LATITUDE (DD.MM.MMM)</b>
<b>NNG-OSS-S</b>	002° 14.395' W	56° 14.615' N

### 3.5 Commencement of Drilling and Casing Installation

<b>Description (NtM 178 Rev 1.0)</b>
Mariners are advised that NnGOWL has commenced drilling operations and casing installation within the Neart Na Gaoithe (NnG) Wind Farm Area.
Three sockets will be drilled into the seabed and three steel casings installed at each wind turbine location, to in turn enable pile and jacket installation. Ahead of drilling commencing, the S3000 (call sign: C6SW6) will place a subsea template on the seabed, to guide drilling. Drilling and casing installation will then be undertaken from the Blue Tern

(call sign: 9HA5208). Drilling operations and casing installation will be supported by the Skandi Acergy (call sign: LAFD7) as required.

A crew transfer vessel Forth Engineer (call sign: 2HAL3) and supply vessel (Sea Gull call sign: LAGK8) may be utilised to transport personnel and casings during the campaign, as required.

Further details of the vessels involved in the works is provided in Section 8.4.

Vessels	Type / Role	Timescales
Blue Tern	Jack-up Vessel	The drilling and casing installation campaign is expected to continue through to 2023.
Saipem 3000	HLV	
Skandi Acergy	OCV	
Sea Gull	PSV	
Forth Engineer	CTV	
<b>Area</b>		
Project Location: Wind Farm Area, shown in Table 1 and Figure 1		
Operational Port: Blyth.		

### 3.6 Offshore Export Cable Hook Up Campaign

Description (NtM 181 Rev 1.0)		
<p>Mariners are advised that Neart na Gaoithe Offshore Wind Farm Limited (NnGOWL) is due to commence pull-in of the two offshore export cables onto the two offshore substation jacket substructures within the Neart na Gaoithe (NnG) Wind Farm Area.</p> <p>A Service Operation Vessel the EDT Protea (call sign: P3KR9) and a Heavy Lift Vessel Olympic Challenger (call sign: LAZQ7) will be on site to support the works, allowing transfer of technicians and equipment to and from the offshore substation jacket substructures and offshore substation topside.</p> <p>A Cable Lay Vessel, the Cable Enterprise (call sign: 2FOV9), will then recover the end of the first export cable, currently wet stored on the seabed in the Wind Farm Area. The cable end will be pulled-in onto the offshore substation jacket substructure. The laid cables will then be buried into the seabed by the Normand Pacific (call sign: LAXI7).</p> <p>A Crew Transfer Vessel will also support the hook up operations.</p> <p>Further details of the vessels involved in the works is provided in Section 8.5.</p>		
Vessels	Type / Role	Timescales
EDT Protea	SOV	The work is due to begin 16 <sup>th</sup> July 2022 at the earliest and will continue until end August 2022.
Olympic Challenger	HLV	
Cable Enterprise	Cable Lay Vessel	
Normand Pacific	Cable Burial Vessel	
MMS Supreme	Crew Transfer Vessel	
<b>Area</b>		
Project Location: Wind Farm Area, shown in Table 1 and Figure 1		

## 4 Planned Operations

This section will be updated when planned operations are upcoming.

## 5 General Safety Advice

All vessels engaged in the construction activity will exhibit appropriate lights and shapes prescribed by the International Regulations for Preventing Collisions at Sea; relative to their operations. All vessels engaged in the activity will also transmit an Automatic Identification System (AIS) message. Mariners are requested to navigate with caution and keep continued watch on VHF Ch. 16, when navigating the area.

Please be aware that by virtue of their mode of operation and the equipment deployed vessels will be Restricted in their Ability to Manoeuvre (RAM) as defined under COLREGs (International Regulations for Preventing Collisions at Sea 1972, Rule 3). Masters of vessels are therefore requested to maintain their vessels and gears at a minimum safe distance from these vessels of 500 metres when it is undertaking its work and showing the appropriate shapes and lights in accordance with COLREGs Rule 18.

Use of Safety Zones within the Neart na Gaoithe Offshore Wind Farm Construction Area is as follows:

- Mandatory “rolling” 500 metres (m) Safety Zones will be established around each wind farm structure (turbines and Offshore Substation Platforms (OSP)) and/or their foundations whilst construction works are in progress, as indicated by the presence of a construction vessel. Up to ten of these Safety Zones may be active at any given time.

The duty Guard Vessels and Marine Coordination Centre will be responsible for monitoring and policing the Safety Zones; and can be contacted directly for advice. Users are advised to keep clear of construction activities, including Safety Zones.

## 6 Fisheries Liaison

Fisheries liaison associated with the activity will be co-ordinated by the Company Fisheries Liaison Officer. For any commercial fishery queries please contact: Peter Berney, telephone: +44 (0)7391 402387 or email: [NnG.FLO@naturalpower.com](mailto:NnG.FLO@naturalpower.com). An Offshore Fisheries Liaison Officer is present on the *Saipem 3000* and can be contacted on Ch16. For any other general queries please contact [info@nngoffshorewind.com](mailto:info@nngoffshorewind.com).

## 7 Marine Coordination Contact Details

The following contact can provide more information if required. Please note that specific queries can also be addressed to the relevant vessel or shore-based representative. The contact details for the marine coordination centre are indicated in Table 6.







Table 6 - Marine Coordination Contact Details







Telephone number (daytime operations):	+44 (0)7508421406 / +44 (0)1890 751415
Emergency contact (24/7):	+44 (0)7508421406 / +44 (0)1890 751415
Email:	<a href="mailto:nng.mc@smchse.com">nng.mc@smchse.com</a>
Address:	NnG Offshore Wind Farm Marine Coordination Centre Gunsreen Basin Eyemouth TD14 5SD

## 8 Vessels Associated with the Activity

Vessel	Vessel Function	Vessel Contact Details	Vessel Information
<b>8.1 Guard Vessels</b>			
Tranquillity S	Guard Vessel	Contact name: Vessel Master Email: <a href="mailto:spousekeil@yahoo.com">spousekeil@yahoo.com</a> Phone: +44 (0) 1346 454758	Call sign: MJUH9 IMO: N/A MMSI: 235053837



Vessel	Vessel Function	Vessel Contact Details	Vessel Information
			
Morning Dawn 	Guard Vessel	Vessel Master Email: <a href="mailto:bridge@morning-dawn.co.uk">bridge@morning-dawn.co.uk</a> Phone: + 33 640 047722 / +44 1779 400158	Call sign: MHEU3 IMO: 8701416 MMSI: 232253000
Seagull 	Guard Vessel	Contact name: Vessel Master Email: <a href="mailto:seagullbf74@gmail.com">seagullbf74@gmail.com</a> Phone: +44 (0) 1261 878040 / +44 (0) 7895 919100	Call sign: MVBO2 IMO: 9112545 MMSI: 233714000
<b>8.2 Pile Installation</b>			
Saipem 3000 (S3000) 	Pile Installation	Contact name: Vessel Master Email: <a href="mailto:captain.s3000@saipem.com">captain.s3000@saipem.com</a> Phone: +39 02 010 24650	Call sign: C6SW6 IMO: 8309165 MMSI: 311516000
Normand Navigator 	Type: Offshore Supply Ship  Function: Offshore Construction Vessel	Contact name: Master of Normand Navigator Email: <a href="mailto:master@navigator.solstad.com">master@navigator.solstad.com</a> Phone (Iridium) : +881677102711	Call sign: LASG7 IMO: 9687356 MMSI: 257794000
Rem Supporter 	Type: Platform Supply Vessel (PSV)  Function: Transport supplies to NnG offshore wind farm.	Contact name: Master of Rem Supporter Email: <a href="mailto:captain@supporter.remoffshore.no">captain@supporter.remoffshore.no</a> Phone (FBB) : +870773946639	Call sign: 5BCN3 IMO: 9482330 MMSI: 209051000
Pegasus	Crew Transfer Vessel	Contact name: Ben Stokes Email: <a href="mailto:Benjamin.Stokes@saipem.com">Benjamin.Stokes@saipem.com</a>	Call sign: V2ED2 IMO: 9433743 MMSI: 305389000

Vessel	Vessel Function	Vessel Contact Details	Vessel Information
		Phone: +44 7833 479 546	
<b>8.3 Offshore Substation Commissioning</b>			
Rix Lion 	CTV	Contact name: Ships Master (Will be rotated with shifts)  Email: <a href="mailto:rix.lion@rix.co.uk">rix.lion@rix.co.uk</a>  Phone: +447702 975599	Call sign: 2HOH3  IMO: 9745706  MMSI: 235105282
Forth Engineer 	CTV	Contact name: Master Onboard  Email: <a href="mailto:wpower@briggsmarine.com">wpower@briggsmarine.com</a> or <a href="mailto:sclarke@briggsmarine.com">sclarke@briggsmarine.com</a>  Phone: 07436 294283	Call sign: 2HAL3  IMO: 9712747  MMSI: 235102028
<b>8.4 Commencement of Drilling and Casing Installation</b>			
Blue Tern 	Jack-up Vessel	Contact name: Blue Tern Master Email: <a href="mailto:master.blt@fredolsen.com">master.blt@fredolsen.com</a> Phone: +47 5100 5334 or +47 5120 6200	Call sign: 9HA5208  IMO: 9598737  MMSI: 215644000
<b>8.5 Export Cable Hook Up Campaign</b>			
EDT Protea 	SOV	Matthew Hart Project Manager <a href="mailto:mhart@briggsmarine.com">mhart@briggsmarine.com</a>	Call sign: P3KR9  IMO: 9019107  MMSI: 209255000
Olympic Challenger 	HLV	Captain - Terje Tømmerbakk <a href="mailto:challenger.captain@olympic.no">challenger.captain@olympic.no</a> MV Olympic Challenger Bridge +47 22 40 81 61 Capt +47 22 40 81 62 Mob +47 46280260 Iridium: +8816414 11572	Call sign: LAZQ7  IMO: 9398292  MMSI: 257089810

Vessel	Vessel Function	Vessel Contact Details	Vessel Information
<p>Cable Enterprise</p> 	CLV	<p>Contact name: Vessel Master</p> <p>Email: <a href="mailto:ce.master@prysmiangroup.com">ce.master@prysmiangroup.com</a></p> <p>Phone: +44 779 8764403</p>	<p>Call sign: 2FOV9</p> <p>IMO: 8645806</p> <p>MMSI: 235093018</p>
<p>Normand Pacific</p> 	Cable Burial	<p>Contact name: Vessel Master</p> <p>Email: <a href="mailto:pacific.master@n-pacific.solstadfarstad.com">pacific.master@n-pacific.solstadfarstad.com</a></p> <p>Phone: +47 4768 8807</p>	<p>Call sign: LAXI7</p> <p>IMO: 9491977</p> <p>MMSI: 257743000</p>
<p>MMS Supreme</p> 	CTV	<p>Call sign: 2HGZ5</p> <p>MMSI: 235103595</p> <p>IMO: 9741073</p>	<p>Master: +44 7741 576452</p>