

Date of issue:	29/04/2022
Period covered:	20/03/2022 – 04/05/2022
Notice number:	090
Author:	Claire Gilchrist (claire.gilchrist@nngoffshorewind.com)

Construction of the Neart na Gaoithe (NnG) Offshore Wind Farm is ongoing. This notice is updated weekly giving information on the progress and resources involved in the offshore works. The intention is to give an overview of activities and vessels involved. Questions regarding the operations are welcomed.

Current works include;

1. Guard vessel duties (Section 3.1)
2. Pile Installation (Section 3.2)
3. Installation of O&M Pontons at Gunsreen Basin (Section 3.3)
4. Commencement of Offshore Substation Installation (Section 4.1)

1 Project Location

The following tables and figures illustrate the boundaries, safety zones and exclusions applicable to the Neart na Gaoithe wind farm area and export cable corridor.

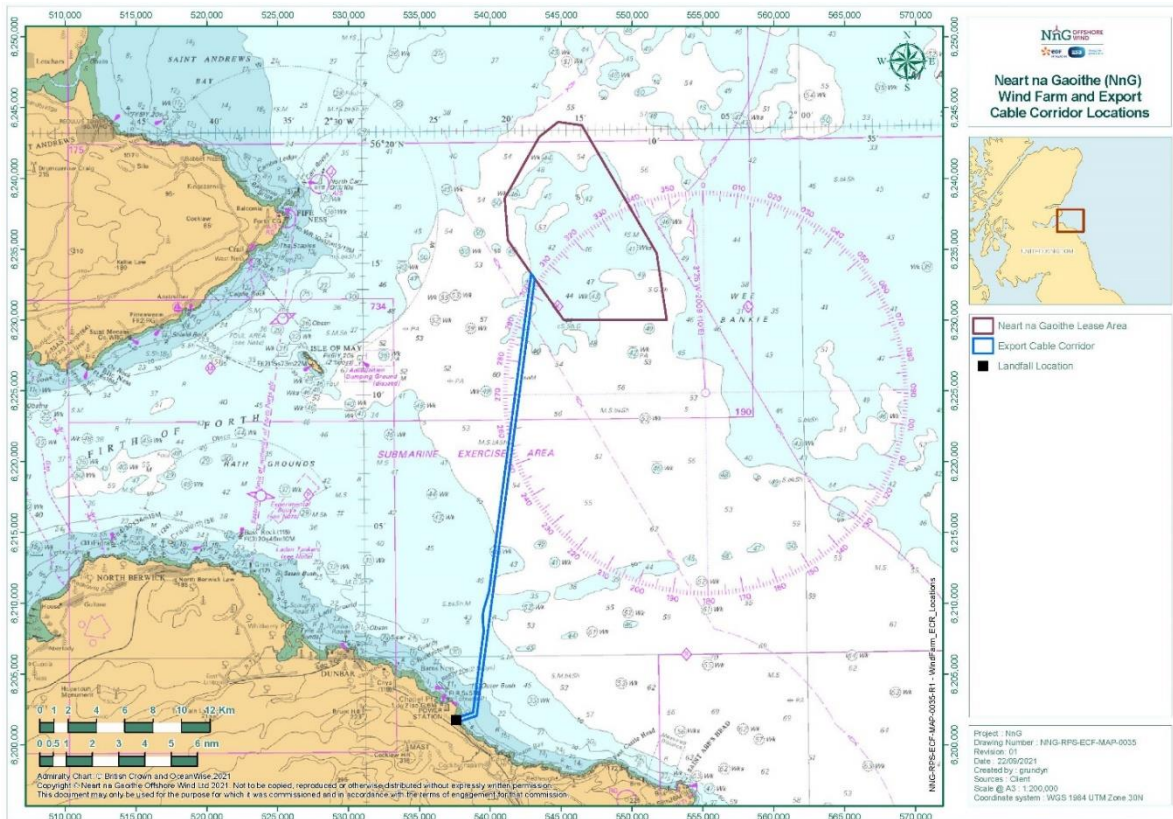


Figure 1 - Wind Farm Area and Export Cable

Table 1 - Wind Farm Area and Export Cable Coordinates

Wind Farm Area Coordinates (WGS84)	
LONGITUDE (DDM)	LATITUDE (DDM)
002° 09.898' W	56° 15.271' N
002° 09.255' W	56° 12.721' N
002° 13.998' W	56° 12.752' N
002° 16.293' W	56° 12.766' N
002° 19.628' W	56° 15.479' N
002° 20.055' W	56° 15.827' N
002° 20.232' W	56° 17.430' N
002° 17.826' W	56° 19.752' N
002° 16.518' W	56° 20.312' N
002° 14.910' W	56° 20.171' N

Export Cable Corridor Coordinates (WGS84)	
LONGITUDE (DDM)	LATITUDE (DDM)
2° 22.472' W	55° 57.734' N
2° 23.539' W	55° 57.541' N
2° 23.802' W	55° 57.584' N
2° 23.820' W	55° 57.609' N
2° 23.636' W	55° 57.693' N
2° 22.729' W	55° 57.866' N
2° 21.938' W	56° 00.990' N
2° 21.951' W	56° 01.007' N
2° 22.005' W	56° 01.449' N
2° 22.004' W	56° 01.552' N
2° 21.932' W	56° 01.795' N
2° 21.563' W	56° 02.468' N
2° 18.479' W	56° 14.546' N
2° 18.237' W	56° 14.349' N

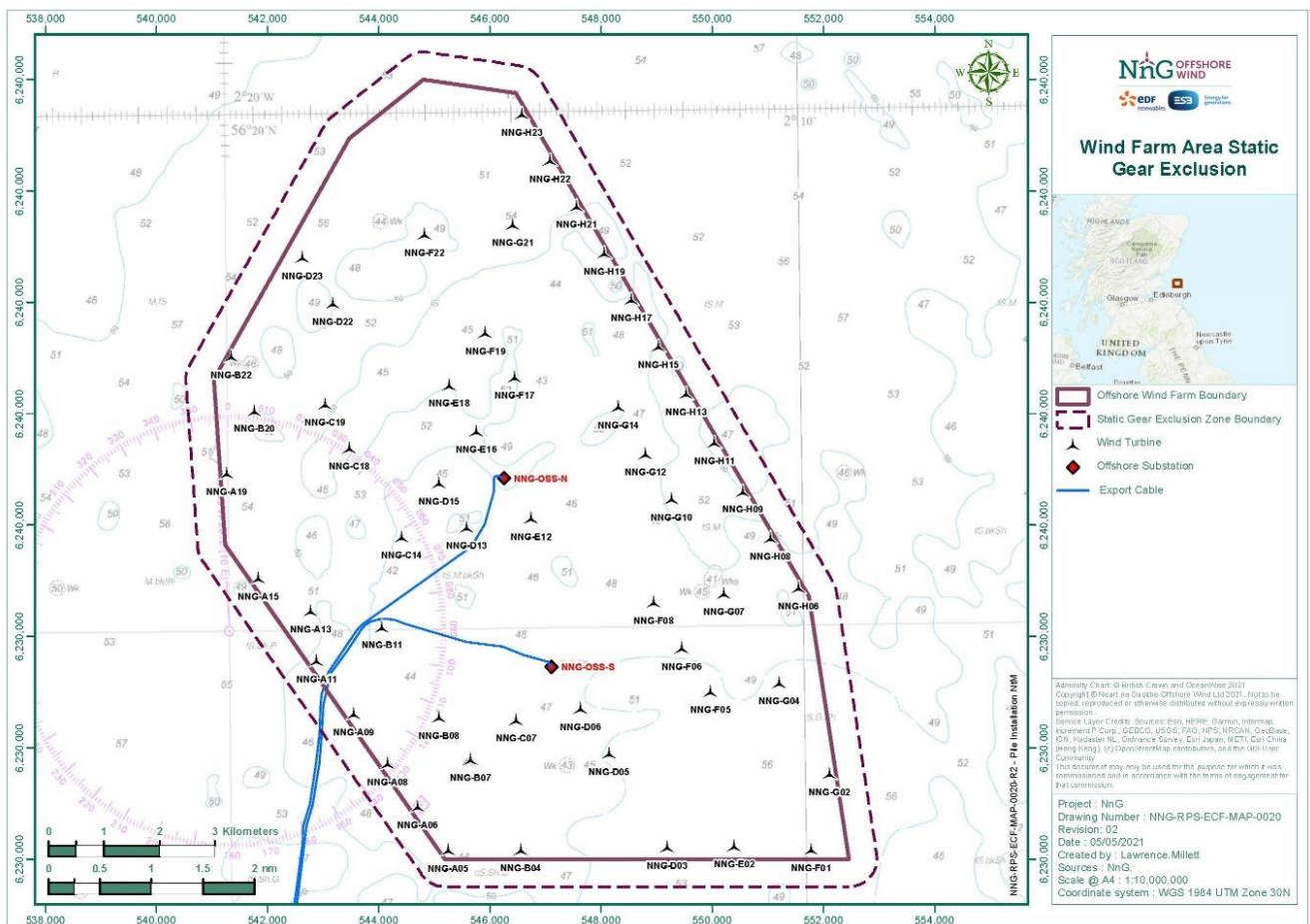


Figure 2 - Wind Farm Area Static Fishing Gear Exclusion

Table 2 - Wind Farm Area Static Fishing Gear Exclusion Coordinates

Longitude (DDM)	Latitude (DDM)
002° 20.566' W	56° 15.680' N
002° 20.849' W	56° 17.468' N
002° 18.242' W	56° 19.938' N
002° 16.611' W	56° 20.613' N
002° 14.363' W	56° 20.392' N
002° 09.300' W	56° 15.334' N
002° 08.661' W	56° 12.651' N
002° 09.058' W	56° 12.405' N
002° 16.505' W	56° 12.410' N

Figure 3 - Nearshore export cable safe advisory avoidance area (in red)

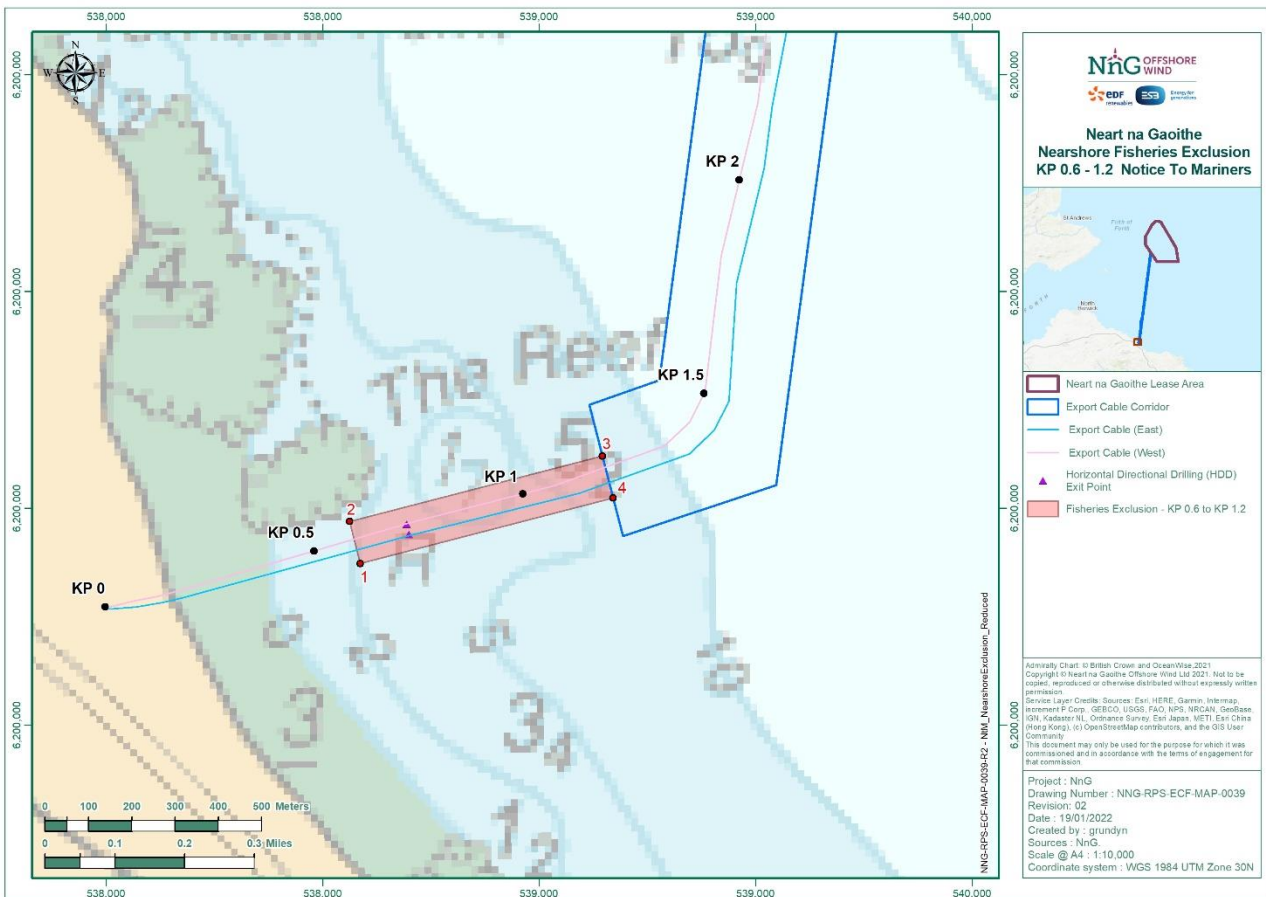


Table 3 - Nearshore export cable safe advisory avoidance area Coordinates

LATITUDE (DDM)	LONGITUDE (DDM)
55° 57.641127' N	2° 23.396185' W
55° 57.693431' N	2° 23.419463' W
55° 57.772190' N	2° 22.856882' W
55° 57.719884' N	2° 22.833616' W

2 Completed Operations

2.1 Foundations: Casing and Pile Installation

Casing and pile installation operations have been successfully completed at the orange shaded locations listed in Table 4. Casing only installation operations have been successfully completed at the grey shaded locations listed in Table 4. The co-ordinates of each casing and pile installed, and the stick-up measurement above seabed can be found at: <https://nngoffshorewind.info/>

Table 4 – Centre coordinates of Turbine Locations and Offshore Substation Platforms with completed locations shaded

ID	LONGITUDE (DD.MM.MMM)	LATITUDE (DD.MM.MMM)	TURBINE ID	LONGITUDE (DD.MM.MMM)	LATITUDE (DD.MM.MMM)
NNG-A13	002° 18.580' W	56° 15.153' N	NNG-F22	002° 16.536' W	56° 18.785' N
NNG-A11	002° 18.489' W	56° 14.668' N	NNG-F19	002° 15.487' W	56° 17.828' N
NNG-A09	002° 17.845' W	56° 14.153' N	NNG-F17	002° 14.978' W	56° 17.394' N
NNG-A08	002° 17.267' W	56° 13.665' N	NNG-F08	002° 12.603' W	56° 15.198' N
NNG-A06	002° 16.755' W	56° 13.248' N	NNG-F06	002° 12.129' W	56° 14.751' N
NNG-A05	002° 16.231' W	56° 12.822' N	NNG-F05	002° 11.632' W	56° 14.330' N
NNG-B22	002° 19.921' W	56° 17.623' N	NNG-G21	002° 14.988' W	56° 18.873' N
NNG-B20	002° 19.521' W	56° 17.097' N	NNG-G14	002° 13.181' W	56° 17.095' N
NNG-B11	002° 17.341' W	56° 14.989' N	NNG-G12	002° 12.715' W	56° 16.640' N
NNG-B08	002° 16.365' W	56° 14.109' N	NNG-G10	002° 12.270' W	56° 16.197' N
NNG-B07	002° 15.822' W	56° 13.695' N	NNG-G07	002° 11.379' W	56° 15.279' N
NNG-B04	002° 14.964' W	56° 12.817' N	NNG-G04	002° 10.435' W	56° 14.405' N
NNG-C19	002° 18.293' W	56° 17.155' N	NNG-G02	002° 09.572' W	56° 13.520' N
NNG-C18	002° 17.882' W	56° 16.725' N	NNG-H23	002° 14.806' W	56° 19.943' N
NNG-C14	002° 16.984' W	56° 15.858' N	NNG-H22	002° 14.322' W	56° 19.488' N
NNG-C07	002° 15.017' W	56° 14.076' N	NNG-H21	002° 13.865' W	56° 19.043' N
NNG-D23	002° 18.666' W	56° 18.572' N	NNG-H19	002° 13.397' W	56° 18.588' N
NNG-D22	002° 18.135' W	56° 18.127' N	NNG-H17	002° 12.932' W	56° 18.134' N
NNG-D15	002° 16.321' W	56° 16.376' N	NNG-H15	002° 12.466' W	56° 17.677' N
NNG-D13	002° 15.848' W	56° 15.946' N	NNG-H13	002° 11.997' W	56° 17.214' N
NNG-D06	002° 13.894' W	56° 14.179' N	NNG-A19	002° 20.015' W	56° 16.490' N
NNG-D05	002° 13.417' W	56° 13.744' N	NNG-A15	002° 19.484' W	56° 15.474' N
NNG-D03	002° 12.421' W	56° 12.828' N	NNG-F01	002° 09.915' W	56° 120790' N
NNG-E18	002° 16.122' W	56° 17.324' N	NNG-H11	002° 11.513' W	56° 16.740' N
NNG-E16	002° 15.658' W	56° 16.874' N	NNG-H09	002° 11.027' W	56° 16.263' N
NNG-E12	002° 14.720' W	56° 16.029' N	NNG-H08	002° 10.555' W	56° 15.808' N
NNG-E02	002° 11.251' W	56° 12.829' N	NNG-H06	002° 10.079' W	56° 15.324' N
NNG-OSS-N	002° 15.193' W	56° 16.446' N	NNG-OSS-S	002° 14.395' W	56° 14.615' N

2.2 Construction Buoyage - East Cardinal Buoy Outage

Description (NtM 173 Rev 4.0)			
Mariners are advised the East Cardinal Buoy has been fully repaired, lighting and AIS is now functional.			
Vessels	Type / Role	Timescales	
Cameron	Mooring Vessel	Work will be undertaken in the next weather window.	
Area			
Construction Buoyage		Coordinates (WGS84)	
		Latitude (DDM)	Longitude (DDM)
NNG E - East Cardinal - Q (3) 10 s white light character		56° 14.329' N	002° 08.557' W

3 Ongoing Operations

This section outlines the ongoing operations in the Project Areas, for full details regarding the activity, the applicable Notice to Mariners (NtM) can be found on our website at <https://nngoffshorewind.com/resources/>.

3.1 Guard Vessels

SFF Services has been appointed by NnGOWL to provide guard vessels during the construction of NnG Offshore Wind Farm. Apart from times of extreme weather, there will always be at least one guard vessel on site, to cover the Wind Farm Area. There is also currently at least one guard vessel on the Export Cable Corridor until works are complete. The guard vessel's primary duty is security of the construction site by informing and warning non-construction vessels of the ongoing activities and associated Safety Zones. The guard vessels present on site as of the date of issue, are shaded in blue in Table 5. The guard vessel details are provided in Section 8.1.

Table 5 - Guard Vessel Project Rotation

Guard Vessel	Start Date	End Date	Guard Vessel Area
Seagull	03/05/2022	31/05/2022	Wind Farm Area
Tranquillity	13/04/2022	03/05/2022	Wind Farm Area
Morning Dawn	23/04/2022	21/05/2022	Export Cable

3.2 Pile Installation

Description (NtM 148 Rev 1.0)
In preparation for the jacket foundation installation, three piles for each wind turbine location and offshore substation platform will be installed. The piles are being installed by the <i>Saipem 3000 (S3000)</i> (call sign: C6SW6) into pre-drilled sockets. Pile installation support is provided by the <i>Skandi Acergy</i> (call sign: LAFD7) offshore construction vessel.
A supply vessel is engaged to transport piles to NnG wind farm, <i>Peak Belfast</i> . A Crew Transfer Vessel may also be used to support operations, <i>Pegasus</i> (call sign V2ED2). The 500m static fishing gear exclusion zone around the Wind

Description (NtM 148 Rev 1.0)		
Farm Area remains, as shown in Figure 2 and Table 2. Further details of the vessels involved in the works is provided in Section 8.2.		
Vessels	Type / Role	Timescales
Saipem 3000	Pile Installation Vessel	The pile installation work is anticipated to be completed in 2022.
Skandi Acergy	Offshore Construction Vessel	
Sea Gull	Platform Supply Vessel	
Peak Belfast	Pile Transfer Vessel	
Pegasus	Crew Transfer Vessel	
Area		
Project Location: Wind Farm Area, shown in Table 1 and Figure 1		
Operational Port: Blyth. On occasion the S3000 will transit to a location near to the Isle of May to complete pile transfers from the Peak Belfast.		

3.3 Installation of Neart na Gaoithe O&M pontoons at Gunsreen Basin

Description (NtM 167 Rev 1.0)		
Mariners are advised that NnGOWL is currently ongoing with installation of pontoons to support the operations and maintenance activities of NnG Offshore Wind Farm. The work commenced on Monday 29 th November 2021.		
Vessels	Type / Role	Timescales
NA	Safety Boat	Installation and commissioning works are planned to continue through to May 2022.

4 Planned Operations





4.1 Commencement of Offshore Substation Installation

Description (NtM 177 Rev 1.0)		
Mariners are advised that NnGOWL is due to commence installation of the offshore substation jackets and the offshore substation topsides within the NnG Wind Farm Area.		
The offshore substation jackets will be brought to site on and installed by the <i>Sleipnir</i> (call sign: 3FER4). Once the jackets are secured in location, the South OSS topside will be installed by the <i>Sleipnir</i> . The South OSS topside will be brought to site using a barge, <i>Wagenborg 7</i> , assisted by two tugs; <i>Pacific Discovery</i> (call sign: 9VFL8) and <i>Multratug 3</i> (call sign: PCDB).		
During the installation of the items, there will be a Crew Transfer Vessel (CTV) on standby in the field to assist with personnel transfer as required. Personnel will be periodically transported to and from the South OSS topside by CTV the <i>Rix Lion</i> (call sign: 2HOH3),		
Further details of the vessels involved in the works is provided in Section 8.3.		




Table 6 - Marine Coordination Contact Details

Telephone number (daytime operations):	+44 (0)7508421406 / +44 (0)1890 751415
Emergency contact (24/7):	+44 (0)7508421406 / +44 (0)1890 751415
Email:	nng.mc@smchse.com
Address:	NnG Offshore Wind Farm Marine Coordination Centre Gungreen Basin Eyemouth TD14 5SD

8 Vessels Associated with the Activity

Vessel	Vessel Function	Vessel Contact Details	Vessel Information
8.1 Guard Vessels			
Tranquillity S 	Guard Vessel	Contact name: Vessel Master Email: spousekeil@yahoo.com Phone: +44 (0) 1346 454758	Call sign: MJUH9 IMO: N/A MMSI: 235053837
Morning Dawn 	Guard Vessel	Vessel Master Email: bridge@morning-dawn.co.uk Phone: + 33 640 047722 / +44 1779 400158	Call sign: MHEU3 IMO: 8701416 MMSI: 232253000
Seagull 	Guard Vessel	Contact name: Vessel Master Email: seagullbf74@gmail.com Phone: +44 (0) 1261 878040 / +44 (0) 7895 919100	Call sign: MVBO2 IMO: 9112545 MMSI: 233714000
8.2 Pile Installation			
Saipem 3000 (S3000) 	Pile Installation	Contact name: Vessel Master Email: captain.s3000@saipem.com Phone: +39 02 010 24650	Call sign: C6SW6 IMO: 8309165 MMSI: 311516000
Skandi Acergy	Offshore Construction Vessel	Contact name: Vessel Master	Call sign: LAFD7 IMO: 9387217

Vessel	Vessel Function	Vessel Contact Details	Vessel Information
		Email: Acergy.captain@acergy.dof.no Phone V-Sat: +47 23 67 54 04	MMSI: 257691000
Sea Gull 	Platform Supply Vessel (PSV)	NnG Client Representative S3000-Rep@nngoffshorewind.com	Call sign: LAGK8 IMO: 9692624 MMSI: 257504000
Peak Belfast 	Pile Transfer Vessel	Capt. F.B.Zeinstra peakbelfast@peakgroup.nl +31 (0) 651184147 (24hr)	Call sign: PBPZ IMO: 9544891 MMSI: 246403000
Pegasus 	Crew Transfer Vessel	Contact name: Ben Stokes Email: Benjamin.Stokes@saipem.com Phone: +44 7833 479 546	Call sign: V2ED2 IMO: 9433743 MMSI: 305389000
8.3 Commencement of Offshore Substation Installation			
Sleipnir 	Heavy lift vessel	Contact name: Mate Email: Mate@Sleipnir.hmc-heerema.com Phone: +870 773944971 (Fleet Broadband) +870 437488710 (Inmarsat)	Call sign: 3FER4 IMO: 9781425 MMSI: 374887000
Wagenborg 7 	Barge	NA	NA
Pacific Discovery	Tug	Contact name: Captain	Call sign: 9VFL8 IMO: 9456202

Vessel	Vessel Function	Vessel Contact Details	Vessel Information
		Email: pacific.discovery@spoships.com Phone: 45-91827677	MMSI: 563761000
Multratug 3 	Tug	Contact name: Master on board Telecommunication: +31 651869102 Fleet Broadband: +31 178082493 Inmarsat (bridge): +870 773 281 087	Call sign: PCDB IMO: 9537408 MMSI: 244890607
Rix Lion 	CTV	Contact name: Ships Master (Will be rotated with shifts) Email: rix.lion@rix.co.uk Phone: +447702 975599	Call sign: 2HOH3 IMO: 9745706 MMSI: 235105282