

Date of issue:	15/04/2022
Period covered:	06/03/2022 – 20/04/2022
Notice number:	088
Author:	Claire Gilchrist (claire.gilchrist@nngoffshorewind.com)

Construction of the Neart na Gaoithe (NnG) Offshore Wind Farm is ongoing. This notice is updated weekly giving information on the progress and resources involved in the offshore works. The intention is to give an overview of activities and vessels involved. Questions regarding the operations are welcomed.

Current works include;

1. Guard vessel duties (Section 3.1)
2. Pile Installation (Section 3.2)
3. Installation of O&M Pontons at Gunsreen Basin (Section 3.3)
4. Construction Buoyage - East Cardinal Buoy Outage (Section 3.4)

1 Project Location

The following tables and figures illustrate the boundaries, safety zones and exclusions applicable to the Neart na Gaoithe wind farm area and export cable corridor.

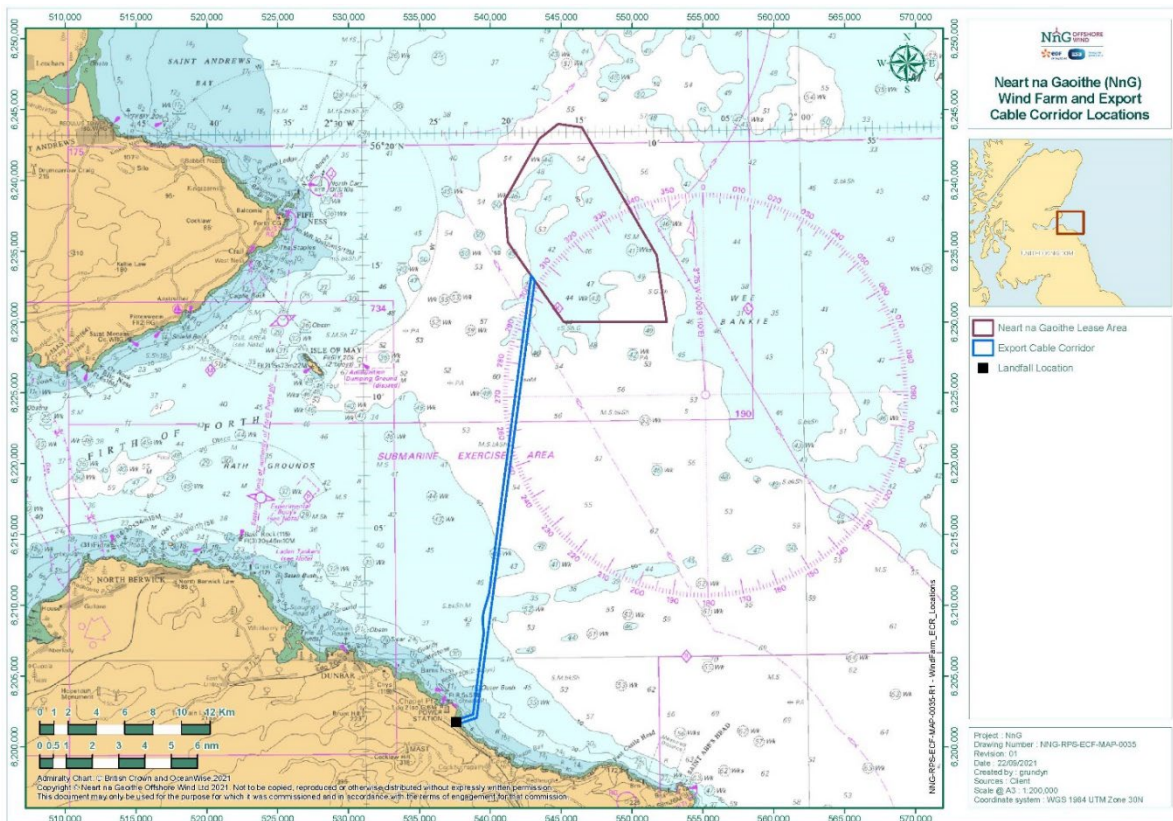


Figure 1 - Wind Farm Area and Export Cable

Table 1 - Wind Farm Area and Export Cable Coordinates

Wind Farm Area Coordinates (WGS84)	
LONGITUDE (DDM)	LATITUDE (DDM)
002° 09.898' W	56° 15.271' N
002° 09.255' W	56° 12.721' N
002° 13.998' W	56° 12.752' N
002° 16.293' W	56° 12.766' N
002° 19.628' W	56° 15.479' N
002° 20.055' W	56° 15.827' N
002° 20.232' W	56° 17.430' N
002° 17.826' W	56° 19.752' N
002° 16.518' W	56° 20.312' N
002° 14.910' W	56° 20.171' N

Export Cable Corridor Coordinates (WGS84)	
LONGITUDE (DDM)	LATITUDE (DDM)
2° 22.472' W	55° 57.734' N
2° 23.539' W	55° 57.541' N
2° 23.802' W	55° 57.584' N
2° 23.820' W	55° 57.609' N
2° 23.636' W	55° 57.693' N
2° 22.729' W	55° 57.866' N
2° 21.938' W	56° 00.990' N
2° 21.951' W	56° 01.007' N
2° 22.005' W	56° 01.449' N
2° 22.004' W	56° 01.552' N
2° 21.932' W	56° 01.795' N
2° 21.563' W	56° 02.468' N
2° 18.479' W	56° 14.546' N
2° 18.237' W	56° 14.349' N

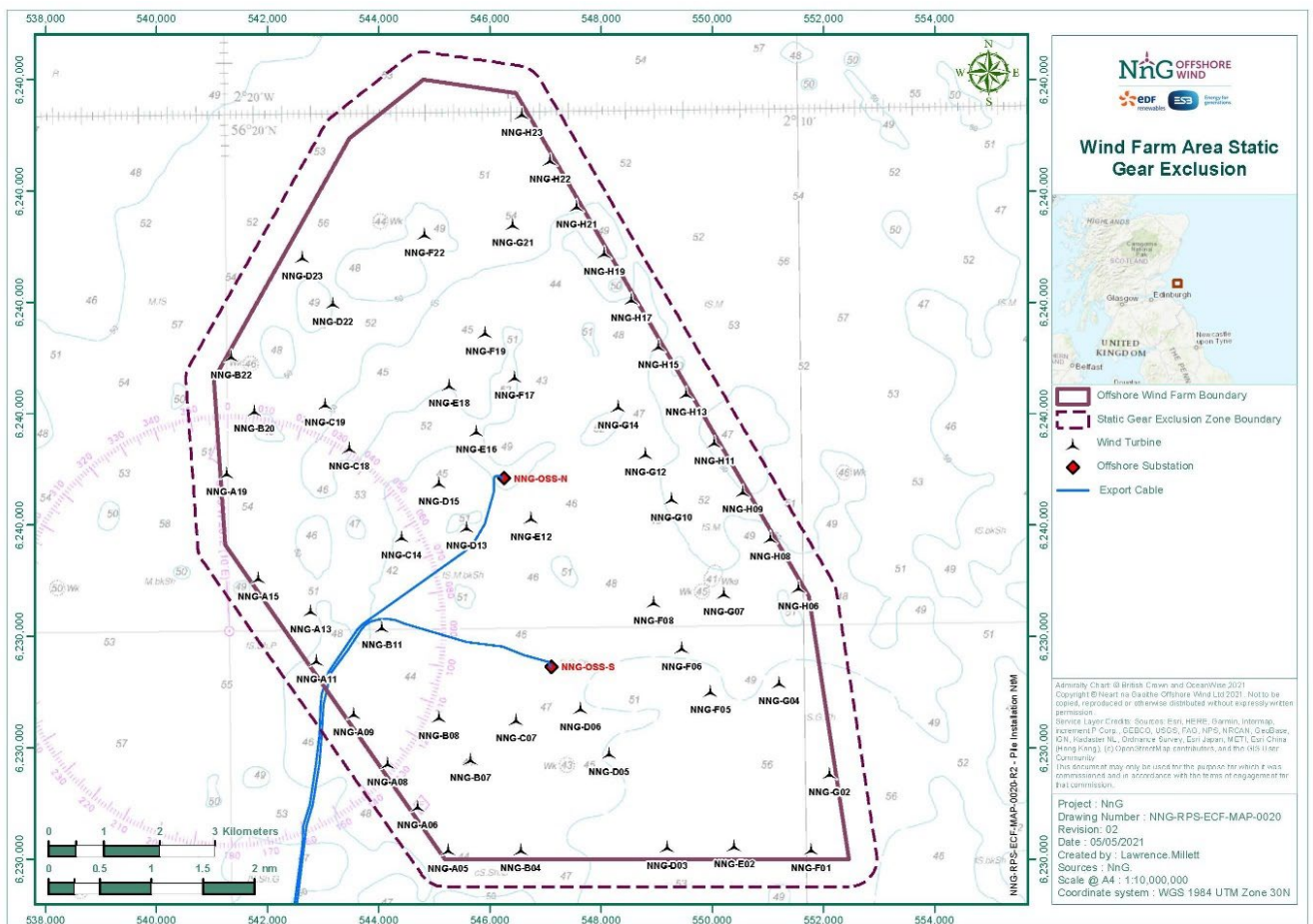


Figure 2 - Wind Farm Area Static Fishing Gear Exclusion

Table 2 - Wind Farm Area Static Fishing Gear Exclusion Coordinates

Longitude (DDM)	Latitude (DDM)
002° 20.566' W	56° 15.680' N
002° 20.849' W	56° 17.468' N
002° 18.242' W	56° 19.938' N
002° 16.611' W	56° 20.613' N
002° 14.363' W	56° 20.392' N
002° 09.300' W	56° 15.334' N
002° 08.661' W	56° 12.651' N
002° 09.058' W	56° 12.405' N
002° 16.505' W	56° 12.410' N

Figure 3 - Nearshore export cable safe advisory avoidance area (in red)

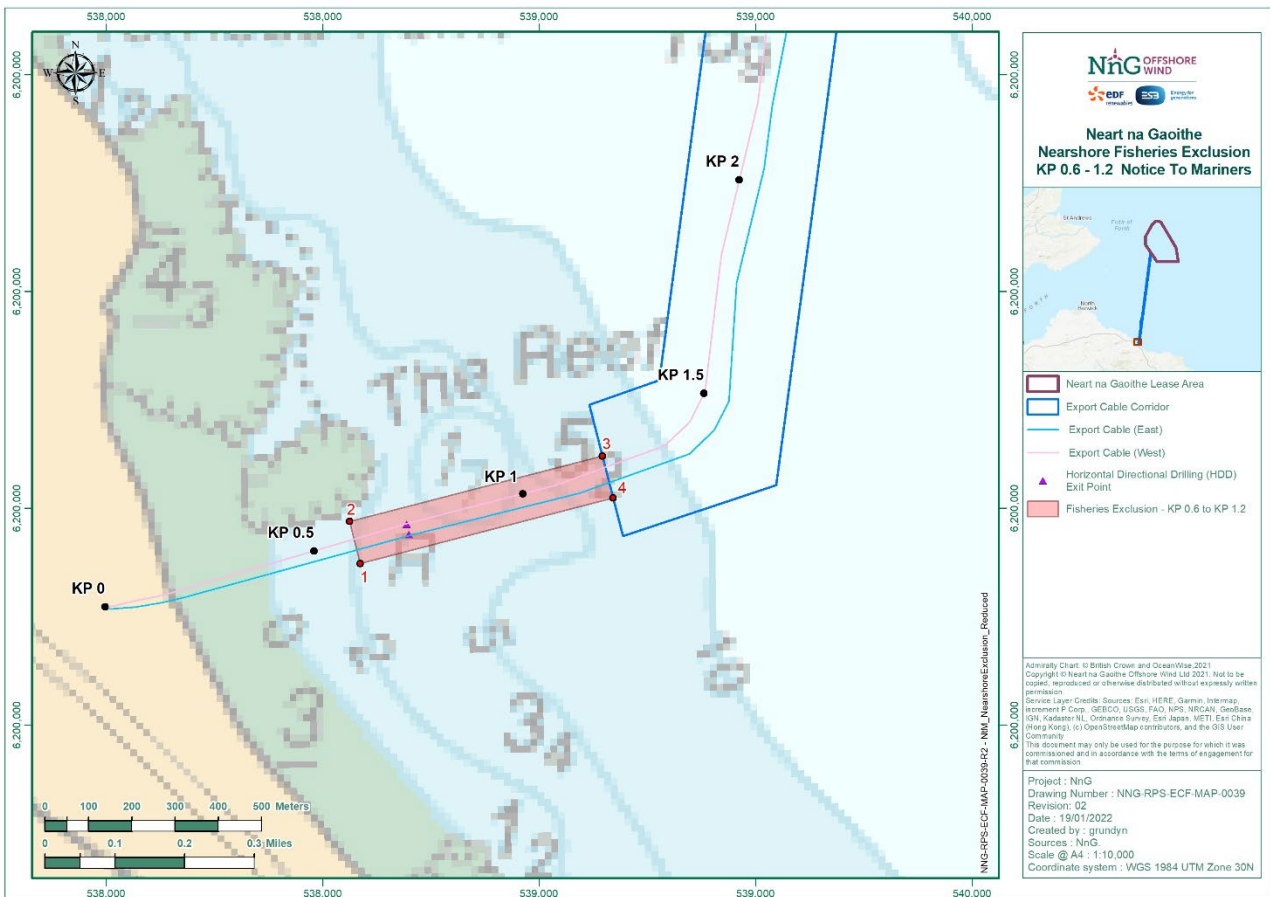


Table 3 - Nearshore export cable safe advisory avoidance area Coordinates

LATITUDE (DDM)	LONGITUDE (DDM)
55° 57.641127' N	2° 23.396185' W
55° 57.693431' N	2° 23.419463' W
55° 57.772190' N	2° 22.856882' W
55° 57.719884' N	2° 22.833616' W

2 Completed Operations

2.1 Foundations: Casing and Pile Installation

Casing and pile installation operations have been successfully completed at the orange shaded locations listed in Table 4. Casing only installation operations have been successfully completed at the grey shaded locations listed in Table 4. The co-ordinates of each casing and pile installed, and the stick-up measurement above seabed can be found at: <https://nngoffshorewind.info/>

Table 4 – Centre coordinates of Turbine Locations and Offshore Substation Platforms with completed locations shaded

ID	LONGITUDE (DD.MM.MMM)	LATITUDE (DD.MM.MMM)	TURBINE ID	LONGITUDE (DD.MM.MMM)	LATITUDE (DD.MM.MMM)
NNG-A13	002° 18.580' W	56° 15.153' N	NNG-F22	002° 16.536' W	56° 18.785' N
NNG-A11	002° 18.489' W	56° 14.668' N	NNG-F19	002° 15.487' W	56° 17.828' N
NNG-A09	002° 17.845' W	56° 14.153' N	NNG-F17	002° 14.978' W	56° 17.394' N
NNG-A08	002° 17.267' W	56° 13.665' N	NNG-F08	002° 12.603' W	56° 15.198' N
NNG-A06	002° 16.755' W	56° 13.248' N	NNG-F06	002° 12.129' W	56° 14.751' N
NNG-A05	002° 16.231' W	56° 12.822' N	NNG-F05	002° 11.632' W	56° 14.330' N
NNG-B22	002° 19.921' W	56° 17.623' N	NNG-G21	002° 14.988' W	56° 18.873' N
NNG-B20	002° 19.521' W	56° 17.097' N	NNG-G14	002° 13.181' W	56° 17.095' N
NNG-B11	002° 17.341' W	56° 14.989' N	NNG-G12	002° 12.715' W	56° 16.640' N
NNG-B08	002° 16.365' W	56° 14.109' N	NNG-G10	002° 12.270' W	56° 16.197' N
NNG-B07	002° 15.822' W	56° 13.695' N	NNG-G07	002° 11.379' W	56° 15.279' N
NNG-B04	002° 14.964' W	56° 12.817' N	NNG-G04	002° 10.435' W	56° 14.405' N
NNG-C19	002° 18.293' W	56° 17.155' N	NNG-G02	002° 09.572' W	56° 13.520' N
NNG-C18	002° 17.882' W	56° 16.725' N	NNG-H23	002° 14.806' W	56° 19.943' N
NNG-C14	002° 16.984' W	56° 15.858' N	NNG-H22	002° 14.322' W	56° 19.488' N
NNG-C07	002° 15.017' W	56° 14.076' N	NNG-H21	002° 13.865' W	56° 19.043' N
NNG-D23	002° 18.666' W	56° 18.572' N	NNG-H19	002° 13.397' W	56° 18.588' N
NNG-D22	002° 18.135' W	56° 18.127' N	NNG-H17	002° 12.932' W	56° 18.134' N
NNG-D15	002° 16.321' W	56° 16.376' N	NNG-H15	002° 12.466' W	56° 17.677' N
NNG-D13	002° 15.848' W	56° 15.946' N	NNG-H13	002° 11.997' W	56° 17.214' N
NNG-D06	002° 13.894' W	56° 14.179' N	NNG-A19	002° 20.015' W	56° 16.490' N
NNG-D05	002° 13.417' W	56° 13.744' N	NNG-A15	002° 19.484' W	56° 15.474' N
NNG-D03	002° 12.421' W	56° 12.828' N	NNG-F01	002° 09.915' W	56° 12.0790' N
NNG-E18	002° 16.122' W	56° 17.324' N	NNG-H11	002° 11.513' W	56° 16.740' N
NNG-E16	002° 15.658' W	56° 16.874' N	NNG-H09	002° 11.027' W	56° 16.263' N
NNG-E12	002° 14.720' W	56° 16.029' N	NNG-H08	002° 10.555' W	56° 15.808' N
NNG-E02	002° 11.251' W	56° 12.829' N	NNG-H06	002° 10.079' W	56° 15.324' N
NNG-OSS-N	002° 15.193' W	56° 16.446' N	NNG-OSS-S	002° 14.395' W	56° 14.615' N

3 Ongoing Operations

This section outlines the ongoing operations in the Project Areas, for full details regarding the activity, the applicable Notice to Mariners (NtM) can be found on our website at <https://nngoffshorewind.com/resources/>.

3.1 Guard Vessels

SFF Services has been appointed by NnGOWL to provide guard vessels during the construction of NnG Offshore Wind Farm. Apart from times of extreme weather, there will always be at least one guard vessel on site, to cover the Wind Farm Area. There is also currently at least one guard vessel on the Export Cable Corridor until works are complete. The guard vessel's primary duty is security of the construction site by informing and warning non-construction vessels of the ongoing activities and associated Safety Zones. The guard vessels present on site as of the date of issue, are shaded in blue in Table 5. The guard vessel details are provided in Section 8.1 and Section 8.3.

Table 5 - Guard Vessel Project Rotation

Guard Vessel	Start Date	End Date	Guard Vessel Area
Seagull	26/03/2022	23/04/2022	Wind Farm Area
Tranquillity	13/04/2022	03/05/2022	Export Cable
Morning Dawn	23/04/2022	21/05/2022	Export Cable

3.2 Pile Installation

Description (NtM 148 Rev 1.0)		
<p>In preparation for the jacket foundation installation, three piles for each wind turbine location and offshore substation platform will be installed. The piles are being installed by the <i>Saipem 3000 (S3000)</i> (call sign: C6SW6) into pre-drilled sockets. Pile installation support is provided by the <i>Skandi Acergy</i> (call sign: LAFD7) offshore construction vessel.</p> <p>A supply vessel is engaged to transport piles to NnG wind farm, <i>Peak Belfast</i>. A Crew Transfer Vessel may also be used to support operations, <i>Pegasus</i> (call sign V2ED2). The 500m static fishing gear exclusion zone around the Wind Farm Area remains, as shown in Figure 2 and Table 2. Further details of the vessels involved in the works is provided in Section 8.2.</p>		
Vessels	Type / Role	Timescales
Saipem 3000	Pile Installation Vessel	The pile installation work is anticipated to be completed in 2022.
Skandi Acergy	Offshore Construction Vessel	
Sea Gull	Platform Supply Vessel	
Peak Belfast	Pile Transfer Vessel	
Pegasus	Crew Transfer Vessel	

Description (NtM 148 Rev 1.0)
Area
Project Location: Wind Farm Area, shown in Table 1 and Figure 1 Operational Port: Blyth. On occasion the S3000 will transit to a location near to the Isle of May to complete pile transfers from the Peak Belfast.

3.3 Installation of Neart na Gaoithe O&M Pontoons at Gunsreen Basin

Description (NtM 167 Rev 1.0)		
Mariners are advised that NnGOWL is currently ongoing with installation of pontoons to support the operations and maintenance activities of NnG Offshore Wind Farm. The work commenced on Monday 29 th November 2021.		
Vessels	Type / Role	Timescales
NA	Safety Boat	Installation and commissioning works are planned to continue through to May 2022.

3.4 Construction Buoyage - East Cardinal Buoy Outage

Description (NtM 173 Rev 4.0)		
Mariners are advised the East Cardinal Buoy is currently experiencing a temporary AIS failure. A subsequent notice to mariners will be issued once functionality is restored. Further details of the vessels involved in the works is provided in Section 8.4.		
Vessels	Type / Role	Timescales
Cameron	Mooring Vessel	Work will be undertaken in the next weather window.
Area		
	Coordinates (WGS84)	
	Latitude (DDM)	Longitude (DDM)
Construction Buoyage		
NNG E - East Cardinal - Q (3) 10 s white light character	56° 14.329' N	002° 08.557' W

4 Planned Operations

There are currently no planned operations, this section will be updated as required.

5 General Safety Advice

All vessels engaged in the construction activity will exhibit appropriate lights and shapes prescribed by the International Regulations for Preventing Collisions at Sea; relative to their operations. All vessels engaged in the activity will also transmit an Automatic Identification System (AIS) message. Mariners are requested to navigate with caution and keep continued watch on VHF Ch. 16, when navigating the area.

Please be aware that by virtue of their mode of operation and the equipment deployed vessels will be Restricted in their Ability to Manoeuvre (RAM) as defined under COLREGs (International Regulations for Preventing Collisions at Sea 1972, Rule 3). Masters of vessels are therefore requested to maintain their vessels and gears at a minimum safe distance from these vessels of 500 metres when it is undertaking it work and showing the appropriate shapes and lights in accordance with COLREGs Rule 18.

Use of Safety Zones within the Neart na Gaoithe Offshore Wind Farm Construction Area is as follows:

- Mandatory “rolling” 500 metres (m) Safety Zones will be established around each wind farm structure (turbines and Offshore Substation Platforms (OSP)) and/or their foundations whilst construction works are in progress, as indicated by the presence of a construction vessel. Up to ten of these Safety Zones may be active at any given time.

The duty Guard Vessels and Marine Coordination Centre will be responsible for monitoring and policing the Safety Zones; and can be contacted directly for advice. Users are advised to keep clear of construction activities, including Safety Zones.

6 Fisheries Liaison

Fisheries liaison associated with the activity will be co-ordinated by the Company Fisheries Liaison Officer. For any commercial fishery queries please contact: Peter Berney, telephone: +44 (0)7391 402387 or email: NnG.FLO@naturalpower.com. An Offshore Fisheries Liaison Officer is present on the *Saipem 3000* within the wind farm area and can be contacted on Ch16. For any other general queries please contact info@nngoffshorewind.com.



7 Marine Coordination Contact Details







The following contact can provide more information if required. Please note that specific queries can also be addressed to the relevant vessel or shore-based representative. The contact details for the marine coordination centre are indicated in Table 6.



Table 6 - Marine Coordination Contact Details

Telephone number (daytime operations):	+44 (0)7508421406 / +44 (0)1890 751415
Emergency contact (24/7):	+44 (0)7508421406 / +44 (0)1890 751415
Email:	nng.mc@smchse.com
Address:	NnG Offshore Wind Farm Marine Coordination Centre Gungreen Basin Eyemouth TD14 5SD

8 Vessels Associated with the Activity

Vessel	Vessel Function	Vessel Contact Details	Vessel Information
8.1 Guard Vessels			
Tranquillity S 	Guard Vessel	Contact name: Vessel Master Email: spousekeil@yahoo.com Phone: +44 (0) 1346 454758	Call sign: MJUH9 IMO: N/A MMSI: 235053837
Seagull 	Guard Vessel	Contact name: Vessel Master Email: seagullbf74@gmail.com Phone: +44 (0) 1261 878040 / +44 (0) 7895 919100	Call sign: MVBO2 IMO: 9112545 MMSI: 233714000

Vessel	Vessel Function	Vessel Contact Details	Vessel Information
<p>Courage</p> 	Guard Vessel	<p>Vessel Master</p> <p>Email: couragesh170@gmail.com</p> <p>Phone: +44 1261 877295 / +44 7766 833463</p>	<p>Call sign: MJDL4</p> <p>IMO: 8712568</p> <p>MMSI: 233308000</p>
8.2 Pile Installation			
<p>Saipem 3000 (S3000)</p> 	Pile Installation	<p>Contact name: Vessel Master</p> <p>Email: captain.s3000@saipem.com</p> <p>Phone: +39 02 010 24650</p>	<p>Call sign: C6SW6</p> <p>IMO: 8309165</p> <p>MMSI: 311516000</p>
<p>Skandi Acergy</p> 	Offshore Construction Vessel	<p>Contact name: Vessel Master</p> <p>Email: Acergy.captain@acergy.dof.no</p> <p>Phone V-Sat: +47 23 67 54 04</p>	<p>Call sign: LAFD7</p> <p>IMO: 9387217</p> <p>MMSI: 257691000</p>
<p>Sea Gull</p> 	Platform Supply Vessel (PSV)	<p>NnG Client Representative</p> <p>S3000-Rep@nngoffshorewind.com</p>	<p>Call sign: LAGK8</p> <p>IMO: 9692624</p> <p>MMSI: 257504000</p>
<p>Peak Belfast</p> 	Pile Transfer Vessel	<p>Capt. F.B.Zeinstra</p> <p>peakbelfast@peakgroup.nl</p> <p>+31 (0) 651184147 (24hr)</p>	<p>Call sign: PBPZ</p> <p>IMO: 9544891</p> <p>MMSI: 246403000</p>
<p>Pegasus</p> 	Crew Transfer Vessel	<p>Contact name: Ben Stokes</p> <p>Email: Benjamin.Stokes@saipem.com</p> <p>Phone: +44 7833 479 546</p>	<p>Call sign: V2ED2</p> <p>IMO: 9433743</p> <p>MMSI: 305389000</p>

Vessel	Vessel Function	Vessel Contact Details	Vessel Information
8.3 Export Cable Guard Vessels			
<p>Morning Dawn</p> 	Guard Vessel – Export Cable	<p>Vessel Master</p> <p>Email: bridge@morning-dawn.co.uk</p> <p>Phone: + 33 640 047722 / +44 1779 400158</p>	<p>Call sign: MHEU3</p> <p>IMO: 8701416</p> <p>MMSI: 232253000</p>
8.4 Construction Buoyage – East Cardinal Buoy Outage			
<p>Cameron</p> 	Mooring Vessel	<p>Contact name: Malcolm Duncan</p> <p>Email: MDuncan@briggsmarine.com</p> <p>Phone: +44 (0) 7711 373 209</p>	<p>Call sign: MYEK6</p> <p>IMO: 9008495</p> <p>MMSI: 232004102</p>