

Date of issue:	14/01/2022
Subject:	Neart na Gaoithe Offshore Wind Farm: Commencement of Rock Protection Installation
NtM number:	165
Revision:	4
Author:	Claire Gilchrist, NnGOWL Offshore Consents Manager (claire.gilchrist@nngoffshorewind.com)

Mariners are advised that Neart na Gaoithe Offshore Wind Farm Limited (NnGOWL) have completed installation of rock protection at the required locations along Neart Na Gaoithe (NnG) two export cables.

The *Simon Stevin* has successfully installed rock protection at the locations in green, shown in Figure 1 and Figure 2. The as-laid coordinates for the location of the proposed rock protection are provided in Table 9 at Table 10 the end of this notice.

The rock protection has slopes of 1 in 3, a maximum width of approximately 4 metres (m) either side of each export cable, and a maximum height of approximately 1.6 m. Two categories of rock sizes have been used for the rock berms. The main layer of protection uses rock of sizes between 1-5 inches. An additional armour layer using larger rocks weighing between 5-40kg has been used between Kilometre Point (KP) 1.26 to KP4.5.

Exclusions for mobile and static gear has temporarily reverted to the export cable corridor, as per Figure 3 and the coordinates in Table 1. This will be shortly lifted and will be notified by NnGOWL. However, in the nearshore area, the previous exclusion area has been lifted. A very small area remains temporarily closed, shown in Figure 4 and Table 2.

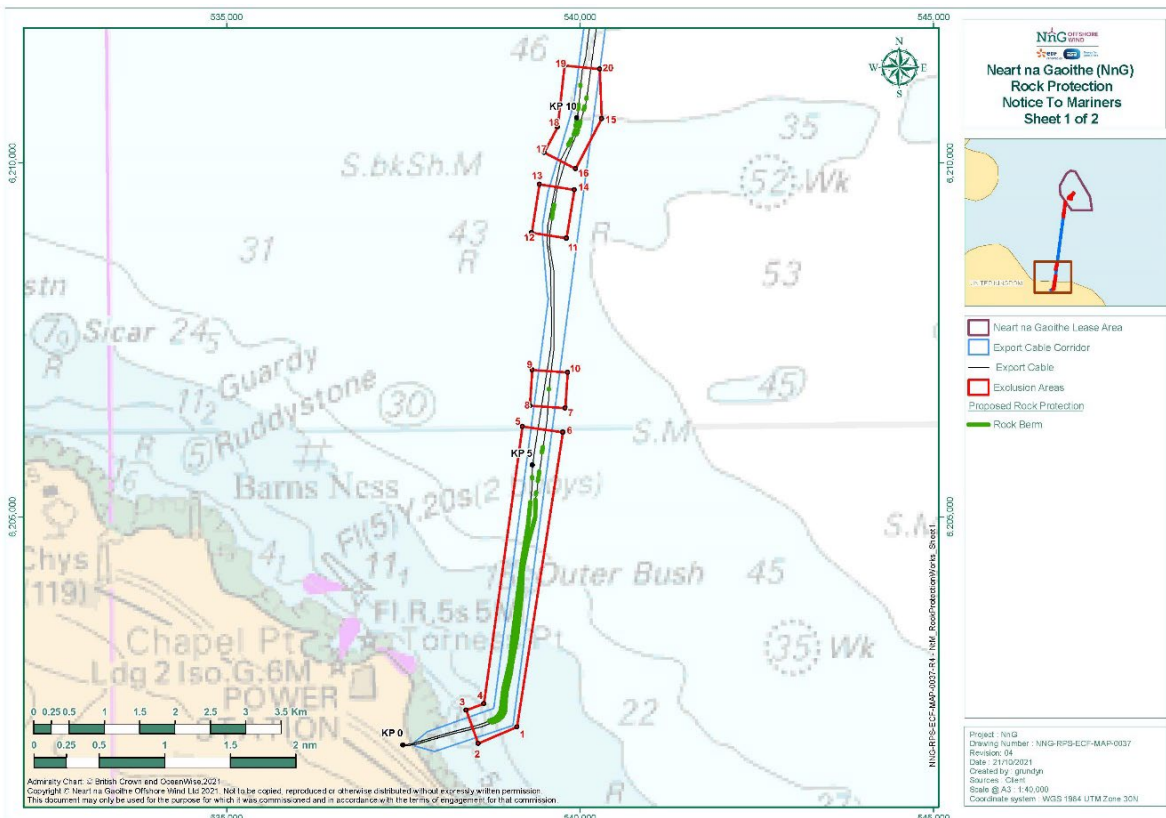


Figure 1 –Export Cable Corridor Exclusion Areas Inshore

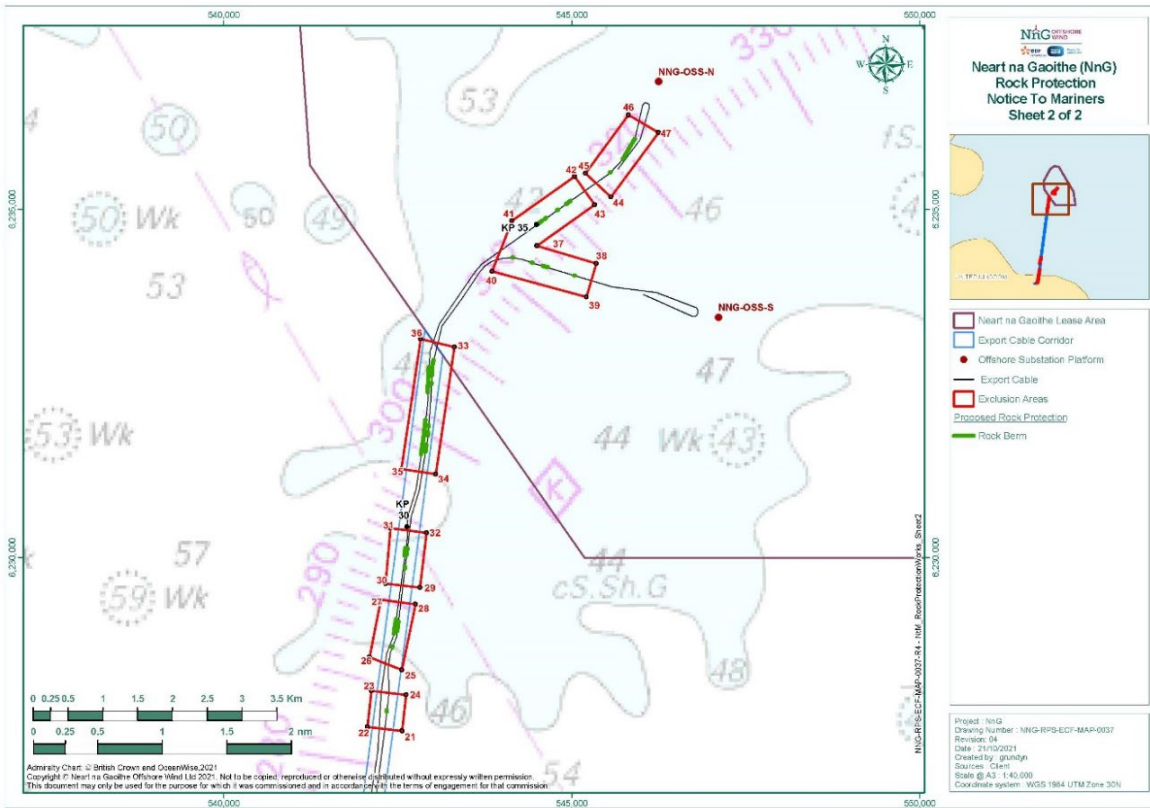


Figure 2 – Export Cable Corridor Exclusion Areas Offshore

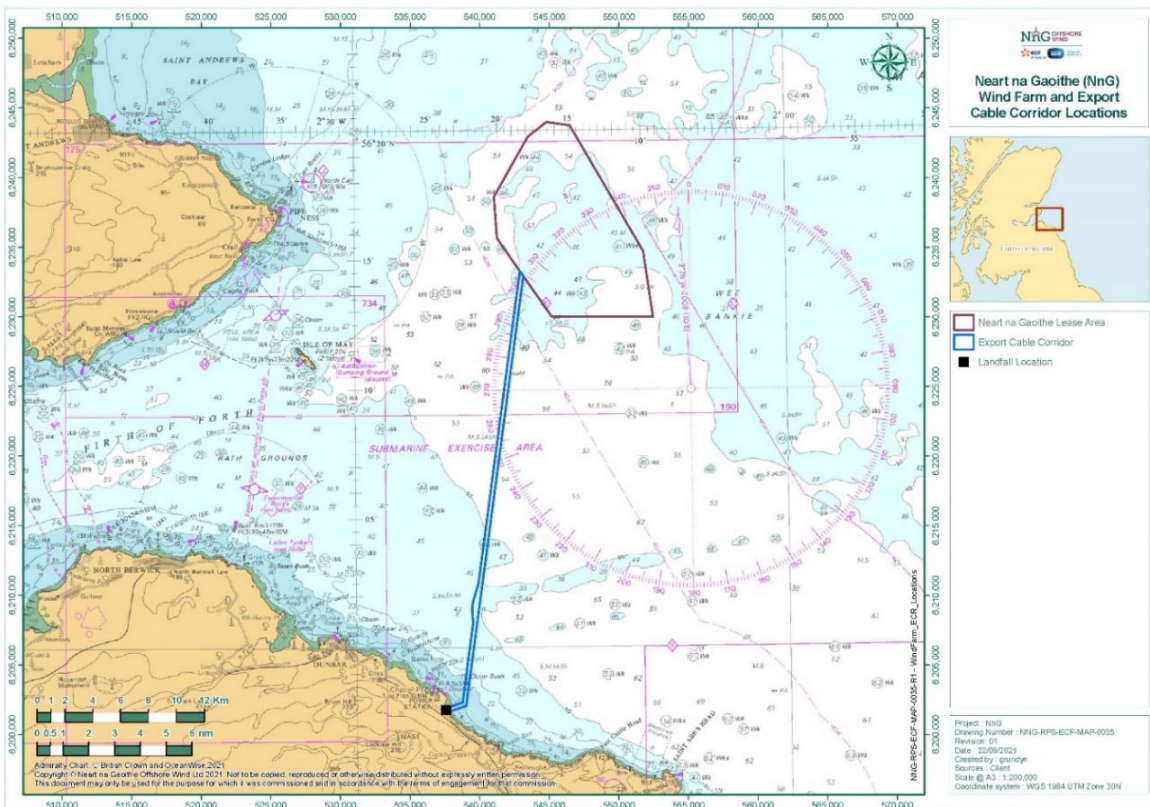


Figure 3 – Export Cable Fisheries Exclusion

Table 1 – Rock Protection Installation Exclusion Area Coordinates

Longitude (DDM)	Latitude (DDM)
2° 22.472' W	55° 57.734' N
2° 23.539' W	55° 57.541' N
2° 23.802' W	55° 57.584' N
2° 23.820' W	55° 57.609' N
2° 23.636' W	55° 57.693' N
2° 22.729' W	55° 57.866' N
2° 21.938' W	56° 00.990' N
2° 21.951' W	56° 01.007' N
2° 22.005' W	56° 01.449' N
2° 22.004' W	56° 01.552' N
2° 21.932' W	56° 01.795' N
2° 21.563' W	56° 02.468' N
2° 18.479' W	56° 14.546' N
2° 18.237' W	56° 14.349' N

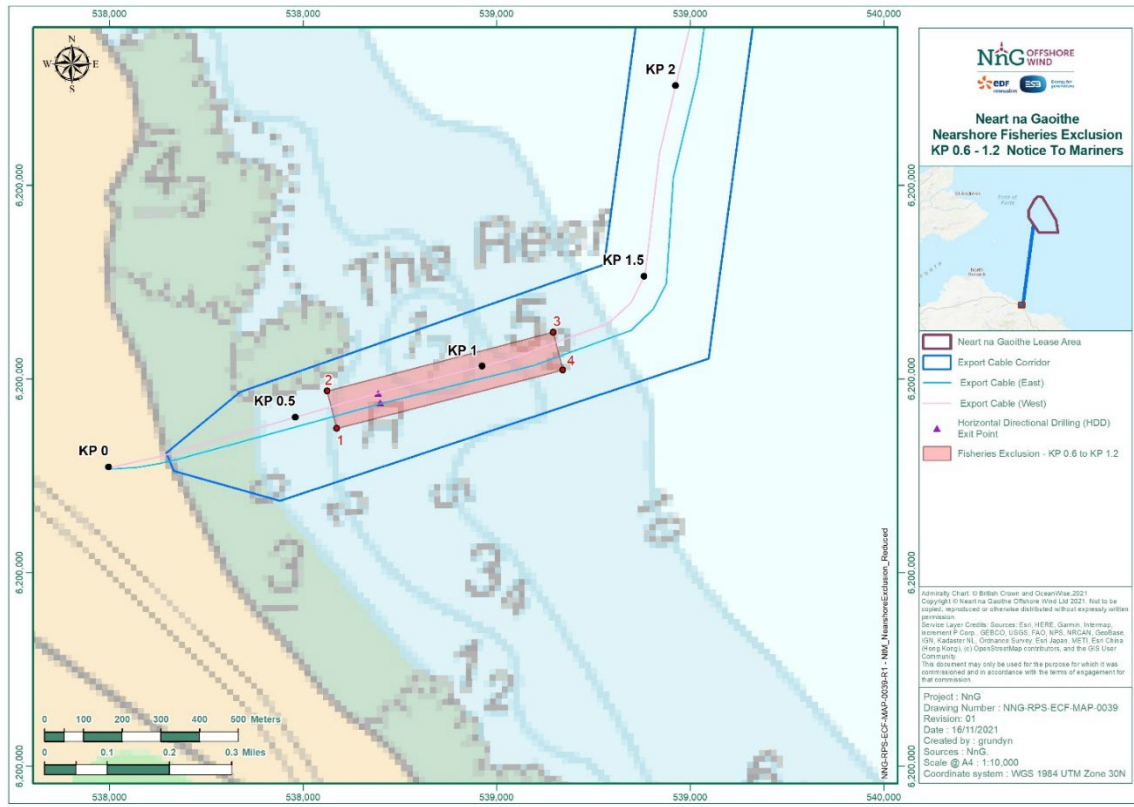


Figure 4 – Nearshore remaining temporary closure to static gear

Table 2 – Coordinates for nearshore remaining temporary closure to static gear

ID	Longitude (DDM)	Latitude (DDM)
1	55° 57.641' N	2° 23.396' W
2	55° 57.693' N	2° 23.419' W
3	55° 57.772' N	2° 22.857' W
4	55° 57.720' N	2° 22.834' W

Vessels Associated with the Activity

At least one guard vessel is currently on site supporting the Neart na Gaoithe Offshore wind farm and export cable installation. The guard vessels will be from the below, which can be contacted as follows, if required:

Table 3 - Seagull Guard Vessel


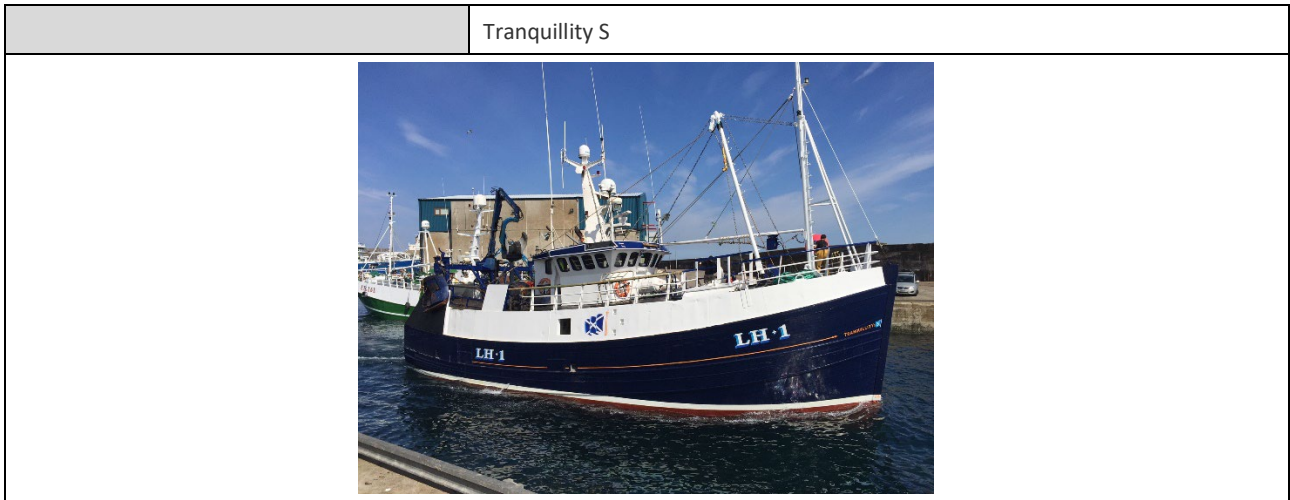
Vessel name:	Seagull
Vessel role:	Guard Vessel
Call sign:	MVBO2
On board contact:	Contact name: Vessel Master Email: seagullbf74@gmail.com Phone: +44 (0) 1261 878040 / +44 (0) 7895 919100
	

Table 4 - Tranquillity S Guard Vessel

Vessel name:	Tranquillity S
Vessel role:	Guard Vessel
Call sign:	MJUH9
On board contact:	Contact name: Vessel Master Email: spousekeil@yahoo.com Phone: +44 (0) 1346 454758



General Safety Advice

Construction activities are ongoing within the boundaries of the Neart na Gaoithe Offshore Wind Farm. Mariners are advised to refer to the NnG Weekly Notice of Operations where up to date information regarding activities on site is broadcast. A copy of this notice and the Weekly Notice of Operations can also be found at <https://nngoffshorewind.com/resources/>

Marine Coordination Contact Details

The following contact can provide more information if required. Please note that specific queries can also be addressed to the relevant vessel or shore based representative.

Table 5 - Marine Coordination Contact Details

Telephone number (daytime):	+44 (0) 1890 751415 (use Emergency contact only until further notice)
Emergency contact (24/7):	+44 (0) 7508 421406
Email:	nng.mc@smchse.com
Address:	NnG Offshore Wind Farm Marine Coordination Centre, Gunsreen Basin, Eyemouth, TD14 5SD

Fisheries Liaison

Fisheries liaison associated with the activity will be co-ordinated by Natural Power. For any commercial fishery queries please contact the NnG company Fisheries Liaison Officer (CFLO) Peter Berney, telephone: +44 (0)7391 402387 or email: NnG.FLO@naturalpower.com. An Offshore Fisheries Liaison Officer (OFLO) is present on the 53000 vessel and can be contacted via VHF Channel 16.

Distribution List

A central list of recipients is maintained by the company Fisheries Liaison Officer; if you are not the appropriate recipient of these notices, or do not wish to receive the notices in the future, please contact us at NnG.FLO@naturalpower.com. A copy of this notice can also be found at <https://nngoffshorewind.com/>

List of Coordinates

Table 6 – Export Cable Rock Protection Locations – West Cable

Kilometre Point (KP)	Rock Protection Start Point		Rock Protection End Point	
	Latitude (DDM)	Longitude (DDM)	Latitude (DDM)	Longitude (DDM)
1.278 – 4.476	55° 57.769 N	002° 22.798 W	55° 59.433 N	002° 22.202 W
4.809 – 4.834	55° 59.612 N	002° 22.174 W	55° 59.625 N	002° 22.175 W
9.590 – 9.696	56° 02.148 N	002° 21.645 W	56° 02.199 N	002° 21.598 W
9.763 – 9.836	56° 02.231 N	002° 21.567 W	56° 02.268 N	002° 21.546 W
9.885 – 9.967	56° 02.294 N	002° 21.539 W	56° 02.337 N	002° 21.526 W
10.127 – 10.201	56° 02.423 N	002° 21.504 W	56° 02.463 N	002° 21.496 W
10.451 – 10.473	56° 02.597 N	002° 21.470 W	56° 02.608 N	002° 21.468 W
28.450 – 28.667	56° 12.184 N	002° 18.957 W	56° 12.299 N	002° 18.923 W
29.587 – 29.704	56° 12.790 N	002° 18.795 W	56° 12.852 N	002° 18.779 W
31.063 – 31.571	56° 13.569 N	002° 18.550 W	56° 13.840 N	002° 18.481 W
31.956 – 32.336	56° 14.047 N	002° 18.447 W	56° 14.252 N	002° 18.429 W
34.988 – 35.094	56° 15.339 N	002° 16.927 W	56° 15.372 N	002° 16.843 W
35.131 – 35.164	56° 15.383 N	002° 16.813 W	56° 15.394 N	002° 16.787 W
35.356 – 35.381	56° 15.453 N	002° 16.635 W	56° 15.460 N	002° 16.615 W
35.513 – 35.598	56° 15.501 N	002° 16.510 W	56° 15.527 N	002° 16.442 W
36.292 – 36.309	56° 15.740 N	002° 15.890 W	56° 15.746 N	002° 15.878 W
36.552 – 36.799	56° 15.842 N	002° 15.718 W	56° 15.953 N	002° 15.587 W
36.831 – 36.902	56° 15.968 N	002° 15.571 W	56° 16.000 N	002° 15.535 W

Table 7 – Export Cable Rock Protection Locations – East Cable

Kilometre Point (KP)	Rock Protection Start Point		Rock Protection End Point	
	Latitude (DDM)	Longitude (DDM)	Latitude (DDM)	Longitude (DDM)
1.301 – 4.554	55° 57.757 N	002° 22.754 W	55° 59.431 N	002° 22.133 W
4.554 – 4.592	55° 59.431 N	002° 22.134 W	55° 59.451 N	002° 22.133 W
4.659 – 4.698	55° 59.487 N	002° 22.128 W	55° 59.508 N	002° 22.123 W
4.854 – 4.908	55° 59.591 N	002° 22.100 W	55° 59.620 N	002° 22.091 W
4.942 – 4.994	55° 59.638 N	002° 22.086 W	55° 59.666 N	002° 22.079 W
5.759 – 5.846	56° 00.073 N	002° 21.969 W	56° 00.120 N	002° 21.962 W
6.157 – 6.174	56° 00.287 N	002° 21.939 W	56° 00.296 N	002° 21.938 W
8.589 – 8.618	56° 01.591 N	002° 21.875 W	56° 01.607 N	002° 21.871 W

Kilometre Point (KP)	Rock Protection Start Point		Rock Protection End Point	
	Latitude (DDM)	Longitude (DDM)	Latitude (DDM)	Longitude (DDM)
8.636 – 8.690	56° 01.616 N	002° 21.868 W	56° 01.644 N	002° 21.859 W
8.716 – 8.801	56° 01.658 N	002° 21.855 W	56° 01.703 N	002° 21.841 W
9.839 – 9.901	56° 02.233 N	002° 21.533 W	56° 02.263 N	002° 21.509 W
9.946 – 10.037	56° 02.286 N	002° 21.496 W	56° 02.333 N	002° 21.470 W
10.198 – 10.255	56° 02.416 N	002° 21.428 W	56° 02.446 N	002° 21.412 W
10.356 – 10.388	56° 02.498 N	002° 21.388 W	56° 02.515 N	002° 21.383 W
27.388 – 27.417	56° 11.583 N	002° 19.062 W	56° 11.598 N	002° 19.059 W
28.322 – 28.346	56° 12.080 N	002° 18.981 W	56° 12.092 N	002° 18.972 W
28.564 – 28.718	56° 12.203 N	002° 18.907 W	56° 12.286 N	002° 18.887 W
29.470 – 29.503	56° 12.687 N	002° 18.791 W	56° 12.705 N	002° 18.787 W
29.665 – 29.774	56° 12.791 N	002° 18.767 W	56° 12.850 N	002° 18.754 W
31.178 – 31.210	56° 13.590 N	002° 18.491 W	56° 13.607 N	002° 18.485 W
31.231 – 31.290	56° 13.618 N	002° 18.482 W	56° 13.649 N	002° 18.473 W
31.413 – 31.473	56° 13.715 N	002° 18.454 W	56° 13.747 N	002° 18.448 W
31.538 – 31.568	56° 13.782 N	002° 18.441 W	56° 13.798 N	002° 18.439 W
32.156 – 32.181	56° 14.113 N	002° 18.397 W	56° 14.127 N	002° 18.394 W
32.278 – 32.355	56° 14.179 N	002° 18.388 W	56° 14.220 N	002° 18.383 W
32.373 – 32.424	56° 14.230 N	002° 18.382 W	56° 14.258 N	002° 18.379 W
32.450 – 32.511	56° 14.271 N	002° 18.377 W	56° 14.304 N	002° 18.365 W
34.491 – 34.517	56° 15.097 N	002° 17.271 W	56° 15.096 N	002° 17.246 W
34.778 – 34.806	56° 15.060 N	002° 17.003 W	56° 15.054 N	002° 16.978 W
34.951 – 35.038	56° 15.030 N	002° 16.844 W	56° 15.016 N	002° 16.764 W
35.421 - 35.438	56° 14.956 N	002° 16.409 W	56° 14.952 N	002° 16.393 W