

Date of issue:	11/06/2021
Period covered:	02/06/2021 – 16/06/2021
Notice number:	044
Author:	Liam Rogers

Construction of the Neart na Gaoithe (NnG) Offshore Wind Farm is ongoing. This notice is updated weekly giving information on the progress and resources involved in the offshore works. The intention is to give an overview of activities and vessels involved. Questions regarding the operations are welcomed.

Current works include;

1. Guard vessel duties (Section 3.1)
2. Nearshore pre-cable installation works (Section 3.2)
3. Offshore Seabed Preparation (Section 3.3)

Planned Operations;

1. Export Cable Installation (Section 4.1)
2. Pile Installation (Section 4.2)

Other notices;

1. Notice of Seabed Hazard – Dropped Object (Section 5.1)

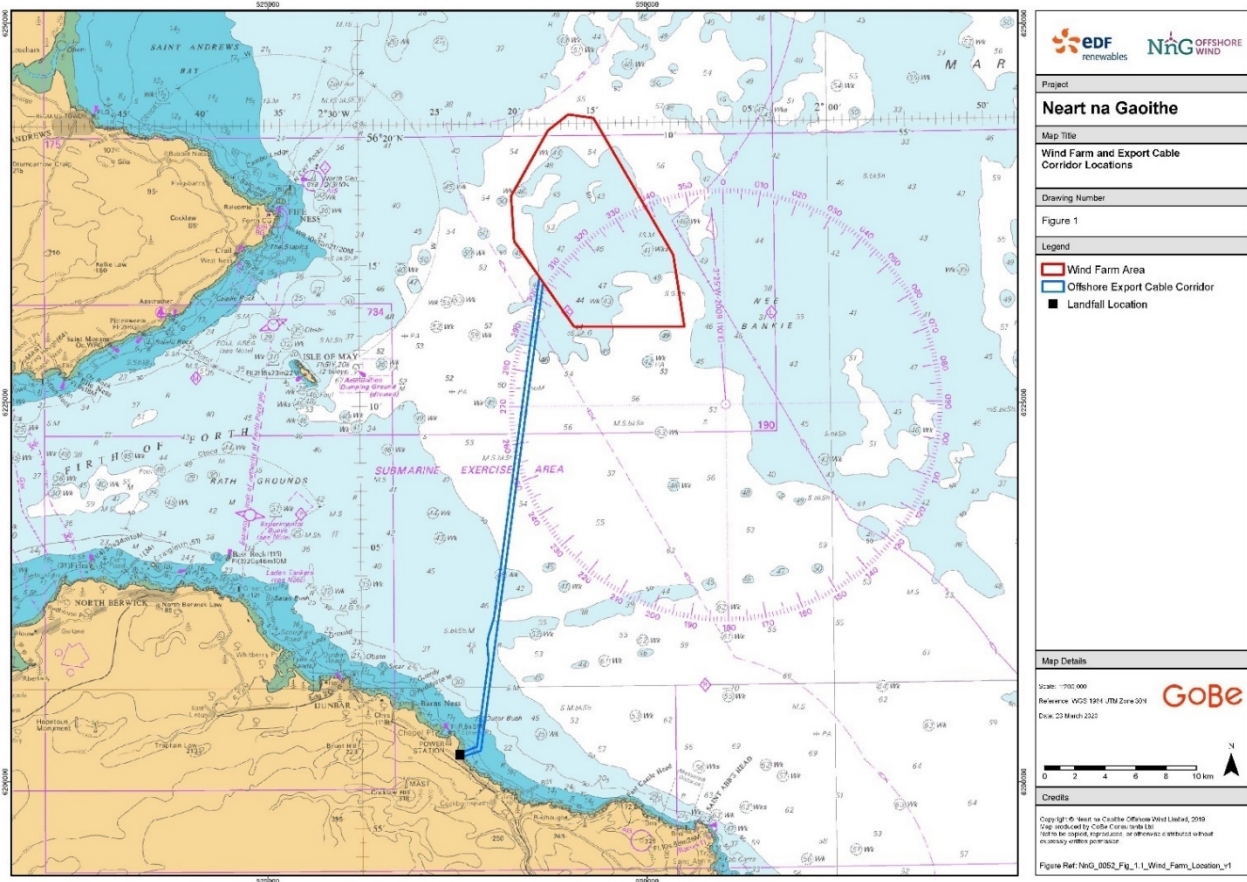


Figure 1 NnG Offshore Wind Farm area and Export Cable Corridor

## 1 Marine Coordination Contact Details

The following contact can provide more information if required. Please note that specific queries can also be addressed to the relevant vessel or shore-based representative.

*Table 1 Marine Coordination Contact Details*

Telephone number (daytime operations):	+44 (0)7508421406 / +44 (0)1890 751415
Emergency contact (24/7):	+44 (0)7508421406 / +44 (0)1890 751415
Email:	<a href="mailto:nng.mc@smchse.com">nng.mc@smchse.com</a>
Address:	NnG Offshore Wind Farm Marine Coordination Centre Gunsreen Basin Eyemouth TD14 5SD

## 2 Completed Operations

### 2.1 Drilling and Casing Installation

Casing installation operations have been successfully completed at the locations listed in Table 2 and Table 3 below (shaded Grey). The co-ordinates of each casing installed, and the casing stick-up (above seabed) can be found at: <https://nngoffshorewind.info/>

*Table 2 Coordinates of NnG Turbine Locations and anticipated locations of work (green highlight) – complete locations are shaded (grey)*

TURBINE ID	LONGITUDE (DD.MM.MMM)	LATITUDE (DD.MM.MMM)	TURBINE ID	LONGITUDE (DD.MM.MMM)	LATITUDE (DD.MM.MMM)
NNG-A13	002° 18.580' W	56° 15.153' N	NNG-F22	002° 16.536' W	56° 18.785' N
NNG-A11	002° 18.489' W	56° 14.668' N	NNG-F19	002° 15.487' W	56° 17.828' N
NNG-A09	002° 17.845' W	56° 14.153' N	NNG-F17	002° 14.978' W	56° 17.394' N
NNG-A08	002° 17.267' W	56° 13.665' N	NNG-F08	002° 12.603' W	56° 15.198' N
NNG-A06	002° 16.755' W	56° 13.248' N	NNG-F06	002° 12.129' W	56° 14.751' N
NNG-A05	002° 16.231' W	56° 12.822' N	NNG-F05	002° 11.632' W	56° 14.330' N
NNG-B22	002° 19.921' W	56° 17.623' N	NNG-G21	002° 14.988' W	56° 18.873' N
NNG-B20	002° 19.521' W	56° 17.097' N	NNG-G14	002° 13.181' W	56° 17.095' N
NNG-B11	002° 17.341' W	56° 14.989' N	NNG-G12	002° 12.715' W	56° 16.640' N
NNG-B08	002° 16.365' W	56° 14.109' N	NNG-G10	002° 12.270' W	56° 16.197' N
NNG-B07	002° 15.822' W	56° 13.695' N	NNG-G07	002° 11.379' W	56° 15.279' N
NNG-B04	002° 14.964' W	56° 12.817' N	NNG-G04	002° 10.435' W	56° 14.405' N
NNG-C19	002° 18.293' W	56° 17.155' N	NNG-G02	002° 09.572' W	56° 13.520' N
NNG-C18	002° 17.882' W	56° 16.725' N	NNG-H23	002° 14.806' W	56° 19.943' N
NNG-C14	002° 16.984' W	56° 15.858' N	NNG-H22	002° 14.322' W	56° 19.488' N

TURBINE ID	LONGITUDE (DD.MM.MMM)	LATITUDE (DD.MM.MMM)	TURBINE ID	LONGITUDE (DD.MM.MMM)	LATITUDE (DD.MM.MMM)
NNG-C07	002° 15.017' W	56° 14.076' N	NNG-H21	002° 13.865' W	56° 19.043' N
NNG-D23	002° 18.666' W	56° 18.572' N	NNG-H19	002° 13.397' W	56° 18.588' N
NNG-D22	002° 18.135' W	56° 18.127' N	NNG-H17	002° 12.932' W	56° 18.134' N
NNG-D15	002° 16.321' W	56° 16.376' N	NNG-H15	002° 12.466' W	56° 17.677' N
NNG-D13	002° 15.848' W	56° 15.946' N	NNG-H13	002° 11.997' W	56° 17.214' N
NNG-D06	002° 13.894' W	56° 14.179' N	NNG-A19	002° 20.015' W	56° 16.490' N
NNG-D05	002° 13.417' W	56° 13.744' N	NNG-A15	002° 19.484' W	56° 15.474' N
NNG-D03	002° 12.421' W	56° 12.828' N	NNG-F01	002° 09.915' W	56° 12.079' N
NNG-E18	002° 16.122' W	56° 17.324' N	NNG-H11	002° 11.513' W	56° 16.740' N
NNG-E16	002° 15.658' W	56° 16.874' N	NNG-H09	002° 11.027' W	56° 16.263' N
NNG-E12	002° 14.720' W	56° 16.029' N	NNG-H08	002° 10.555' W	56° 15.808' N
NNG-E02	002° 11.251' W	56° 12.829' N	NNG-H06	002° 10.079' W	56° 15.324' N

Table 3 Coordinates of NnG Offshore Substation Platform (OSP) Locations – complete locations are shaded (grey)

OSP ID	LONGITUDE (DD.MM.MMM)	LATITUDE (DD.MM.MMM)	OSP ID	LONGITUDE (DD.MM.MMM)	LATITUDE (DD.MM.MMM)
NNG-OSS-S	002° 14.395' W	56° 14.615' N	NNG-OSS-N	002° 15.193' W	56° 16.446' N

## 2.2 Export Cable Landfall – HDD Marine Works

As of 4<sup>th</sup> March 2021, NnGOWL has completed the HDD supporting works within the nearshore extent of the Export Cable Corridor. Ducting has been installed at HDD1 and HDD2, the position and stick-up above seabed is provided in Table 4. Two surface marker buoys are in place to notify of this.

Table 4 - HDD Ducting Stick up and location

Exit Pit	Longitude (DDM)	Latitude (DDM)	Stick-up
HDD 1	002° 23.296' W	55° 57.676' N	Approx. 1.30m
HDD 2	002° 23.282' W	55° 57.694' N	Approx. 1.50m

## 2.3 Maintenance of Acoustic Monitoring Devices

As of 8<sup>th</sup> June 2021, NnGOWL has completed the maintenance of Acoustic Monitoring Devices. The As-Laid co-ordinates for each of the Devices can be found in Table 5. **Error! Reference source not found..**

*Table 5 – Acoustic Monitoring Device Coordinates*

Device	Longitude (DDM) (WGS84)	Latitude (DDM) (WGS84)
NNG1	002° 19.134' W	56° 17.880' N
NNG2	002° 15.229' W	56° 15.121' N
NNG3	002° 09.995' W	56° 16.336' N
NNG4	002° 05.441' W	56° 16.346' N

**3 Ongoing Operations**

**3.1 Guard Vessels**


SFF Services has been appointed by NnGOWL to provide guard vessels during the Construction of NnG Offshore Wind Farm. Apart from times of extreme weather, there will always be at least two guard vessels on site, to cover the Wind Farm Area and Export Cable Corridor. The guard vessel’s primary duty is security of the construction site by informing and warning non-construction vessels of the ongoing activities and associated Safety Zones.

*Table 6 Guard Vessel; Artemis*

Vessel name:	Artemis
Vessel type and Dimensions:	Guard Vessel LOA: 27.69m, Beam: 8.7m, Draught: 5.1m
Vessel role:	Guard Vessel Duties
Location of operations:	Return to Offshore Wind Farm on 14/06/21
Call sign:	MVIX5
Maritime Mobile Service Identity:	233975000
On board contact:	Vessel Master concordeb47@aol.com
Onshore representative:	Martin Malone Martin.malone@nngoffshorewind.com +44(0)7880439480



*Table 7 Guard Vessel; Tranquillity S*

Vessel name:	Tranquillity S
Vessel type and Dimensions:	Guard Vessel LOA: 19.0m, Beam: 7.0m, Draught: 2.63m
Vessel role:	Guard Vessel Duties
Location of operations:	Offshore Wind Farm until 21/06/21
Call sign:	MJUH9
Maritime Mobile Service Identity:	235053837
On board contact:	Vessel Master spousekeil@yahoo.com
Onshore representative:	Martin Malone Martin.malone@nngoffshorewind.com +44(0)7880439480
	

*Table 8 Guard Vessel; Seagull*

Vessel name:	Seagull
Vessel type and Dimensions:	Guard Vessel LOA: 30.0m, Beam: 8.0m, Draught: 4.9m
Vessel role:	Guard Vessel Duties
Location of operations:	Offshore Wind Farm until 14/06/21
Call sign:	MVBO2
Maritime Mobile Service Identity:	233714000
On board contact:	Vessel Master seagullbf74@gmail.com
Onshore representative:	Martin Malone Martin.malone@nngoffshorewind.com +44(0)7880439480

Vessel name:	Seagull
	

### 3.2 Nearshore pre-cable installation works

Mariners are advised that Neart na Gaoithe Offshore Wind Farm Limited (NnGOWL) have commenced preparation works for the export cable installation, within the nearshore extent of the Export Cable Corridor. Two jack-up vessels, *Capall Mara* (MBSF3) and *C57 Red Squirrel* (J8B5722), will be on site over the coming weeks.

The *Capall Mara* backhoe dredger is working along the two cables routes within the nearshore area, a first pass was completed to reposition boulders between KP0.65 and KP1.4 (Figure 2), and work is currently ongoing to excavate two trenches within which each cable will be laid. Excavated material is temporarily repositioned to the side of the trench and will be backfilled by the *Capall Mara* once the nearshore cable installation is completed.

*C57 Red Squirrel* will work at KP0.65, to excavate two pits at the existing HDD exits and conduct minor construction works associated with the HDD exit point. The jack up vessel *C57 Red Squirrel* will arrive on site supported by two tugs, either *Forth Trojan* (2FYM4), and/or *Forth Drummer* (2FIG9), and/or *The Battler* (MGHD9).

A Crew Transfer Vessel, *Celtic Guardian* (21ZH5), is transferring personnel between the *Capall Mara* and *C57 Red Squirrel* and Eyemouth harbour each day. *Celtic Guardian* is also supporting with periodic minor surveys of the route. A dive vessel, *CRC Tempest* (MYUY7) will also work alongside the *C57 Red Squirrel* providing dive support associated with the minor HDD Construction works, as required.

**Vessels are requested to remain at least 500 metres away from the *Capall Mara* and *C57 Red Squirrel*. Static fishing gear is requested to remain removed from the updated exclusion area shown in Figure 2 and Table 9.**

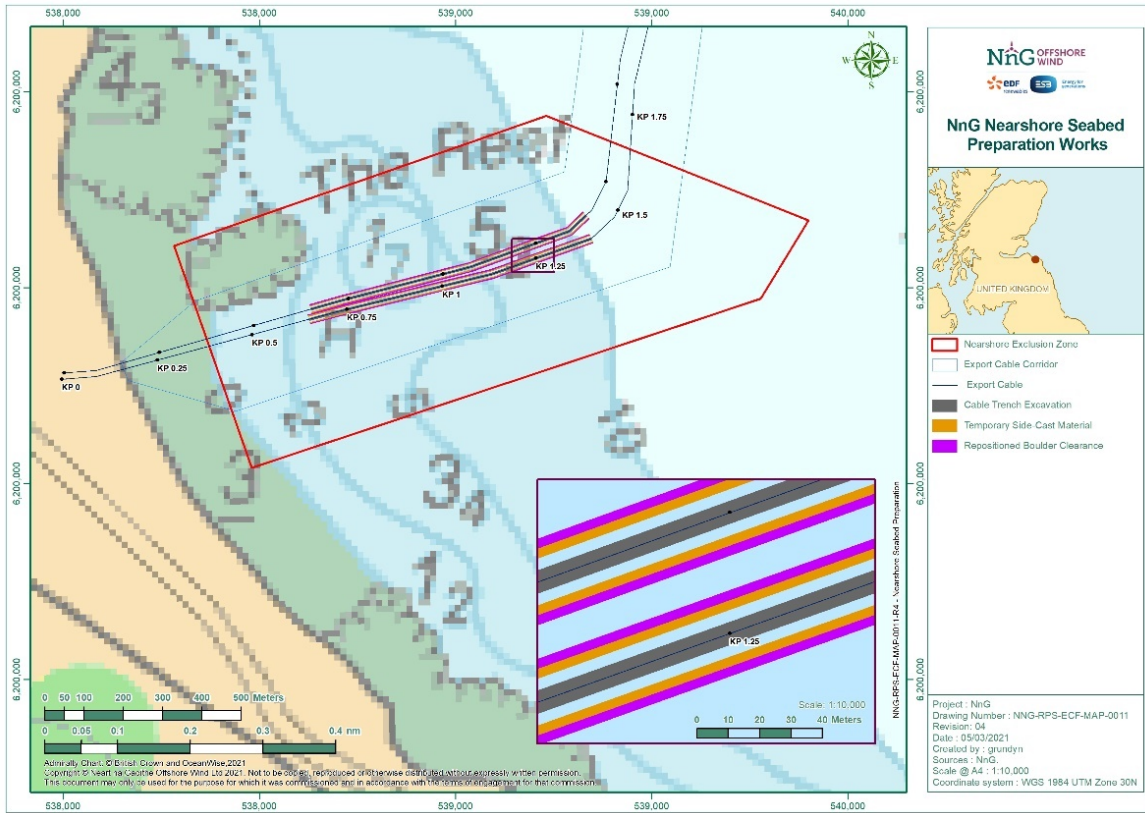


Figure 2 - Location of nearshore pre-cable installation works and nearshore exclusion zone

Table 9 - Nearshore Exclusion Zone Coordinates

Polygon Point	Nearshore Exclusion Zone Coordinates (WGS84)	
	Longitude (DDM)	Latitude (DDM)
1	002° 23.6869' W	55° 57.7687' N
2	002° 22.7721' W	55° 57.9432' N
3	002° 22.1320' W	55° 57.7960' N
4	002° 22.2507' W	55° 57.6890' N
5	002° 23.5014' W	55° 57.4629' N

Table 10 Nearshore Jack-Up Barge (JUB); Capall Mara

Vessel name:	Capall Mara
Vessel role:	Nearshore Jack-Up Barge
Call sign:	MBSF3
Maritime Mobile Service Identity:	232010652
On board contact:	Contact name: Vessel Master Email: <a href="mailto:capallmara@abcomarine.co.uk">capallmara@abcomarine.co.uk</a> Phone: +44 (0) 7711 498085

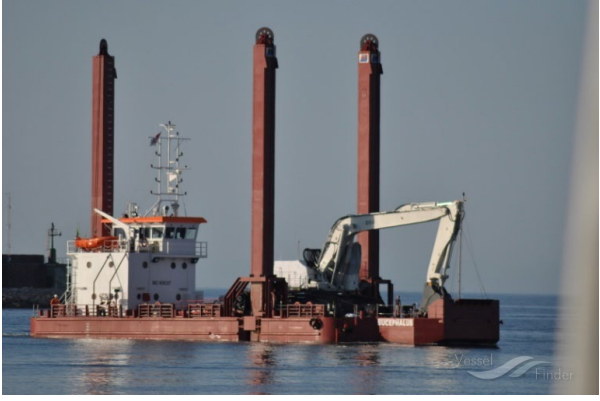
Vessel name:	Capall Mara
Onshore representative:	Contact name: Lorna Emmet Email: <a href="mailto:lornaemmet@abconearshore.co.uk">lornaemmet@abconearshore.co.uk</a> Phone: +44 (0) 7889 584593
	

Table 11 Nearshore Jack-Up Barge (JUB); C57 Red Squirrel


Vessel name:	C57 Red Squirrel
Vessel role:	Nearshore Jack-Up Barge
Call sign:	J8B5722
Maritime Mobile Service Identity:	377744000
On board contact:	Contact name: Vessel Master Email: <a href="mailto:C57@abcomarine.co.uk">C57@abcomarine.co.uk</a> Phone: +47 4768 8807
Onshore representative:	Contact name: Lorna Emmet Email: <a href="mailto:lornaemmet@abconearshore.co.uk">lornaemmet@abconearshore.co.uk</a> Phone: +44 (0) 7889 584593
	

Table 12 Tug; Forth Trojan

Vessel name:	Forth Trojan
Vessel role:	Tug
Call sign:	2FYM4


Maritime Mobile Service Identity:	235095311
On board contact:	Contact name: Alan Henderson Email: <a href="mailto:AHenderson@briggsmarine.com">AHenderson@briggsmarine.com</a> Phone: +44 1592 871 906 / +44 7736 496 708
Onshore representative:	Contact name: Lorna Emmet Email: <a href="mailto:lornaemmet@abconearshore.co.uk">lornaemmet@abconearshore.co.uk</a> Phone: +44 (0) 7889 584593
 <p>© Ashley Hunn MarineTraffic.com</p>	

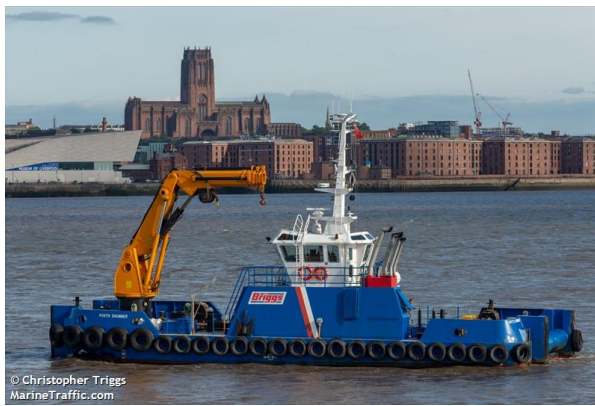
Table 13 Tug; Battler

Vessel name:	Battler
Vessel role:	Tug
Call sign:	MGHD9
Maritime Mobile Service Identity:	235021512
On board contact:	Contact name: Sean Harrington Email: <a href="mailto:sean@atlantictowage.com">sean@atlantictowage.com</a> Phone: +353 (0) 8685 95701
Onshore representative:	Contact name: Lorna Emmet Email: <a href="mailto:lornaemmet@abconearshore.co.uk">lornaemmet@abconearshore.co.uk</a> Phone: +44 (0) 7889 584593
	

Table 14 Tug; Forth Drummer

Vessel name:	Forth Drummer
--------------	---------------

Vessel role:	Tug
Call sign:	2FIG9
Maritime Mobile Service Identity:	235091503
On board contact:	Contact name: Alan Henderson Email: <a href="mailto:AHenderson@briggsmarine.com">AHenderson@briggsmarine.com</a> Phone: +44 1592 871 906 / +44 7736 496 708
Onshore representative:	Contact name: Lorna Emmet Email: <a href="mailto:lornaemmet@abconearshore.co.uk">lornaemmet@abconearshore.co.uk</a> Phone: +44 (0) 7889 584593



© Christopher Triggs  
MarineTraffic.com


Table 15 Crew Transfer Vessel (CTV) and Survey Vessel; Celtic Guardian

Vessel name:	Celtic Guardian
Vessel role:	Crew Transfer Vessel and Survey Vessel
Call sign:	21ZH5
Maritime Mobile Service Identity:	235114006
On board contact:	Contact name: Vessel Master – Iain Hill Email: <a href="mailto:iain.hill@specialisedmarinesupport.com">iain.hill@specialisedmarinesupport.com</a> Phone: 07540 944992
Onshore representative:	Contact name: Steven Foster Phone: +44 (0) 7425 623377



© BERNARD HILLY  
MarineTraffic.com

Table 16 Dive Support Vessel (DSV); Tempest

Vessel name:	Tempest
Vessel role:	Dive Support Vessel
Call sign:	MYUY7
Maritime Mobile Service Identity:	232003835
On board contact:	Contact name: Rob Merrix Email: <a href="mailto:crctempest@commercialribcharter.co.uk">crctempest@commercialribcharter.co.uk</a>
Onshore representative:	Contact name: Lorna Emmet Email: <a href="mailto:lornaemmet@abconearshore.co.uk">lornaemmet@abconearshore.co.uk</a> Phone: +44 (0) 7889 584593
	

### 3.3 Offshore Seabed Preparation

Mariners are advised that a single vessel, *Sartor (3ESV4)*, is undertaking the remaining boulder relocation operations in preparation for installation of the inter array cables in the Wind Farm Area.

Relocation of boulders in areas of inter array cable infrastructure is a critical pre-construction activity to reduce significant Health and Safety risks to the construction phase. Boulders will be relocated a short distance from their existing position only.

#### Area of Operations

Mariners are advised that the *Sartor* has been mobilised to work within the NnG Wind Farm Area, shown in Figure 3. The Wind Farm Area coordinates are provided in Table 17. The works are expected to last until December 2021, weather dependent.

**Vessels are requested to remain at least 500 metres away from the work vessel and static gear is requested to be kept clear of the wind farm area.**

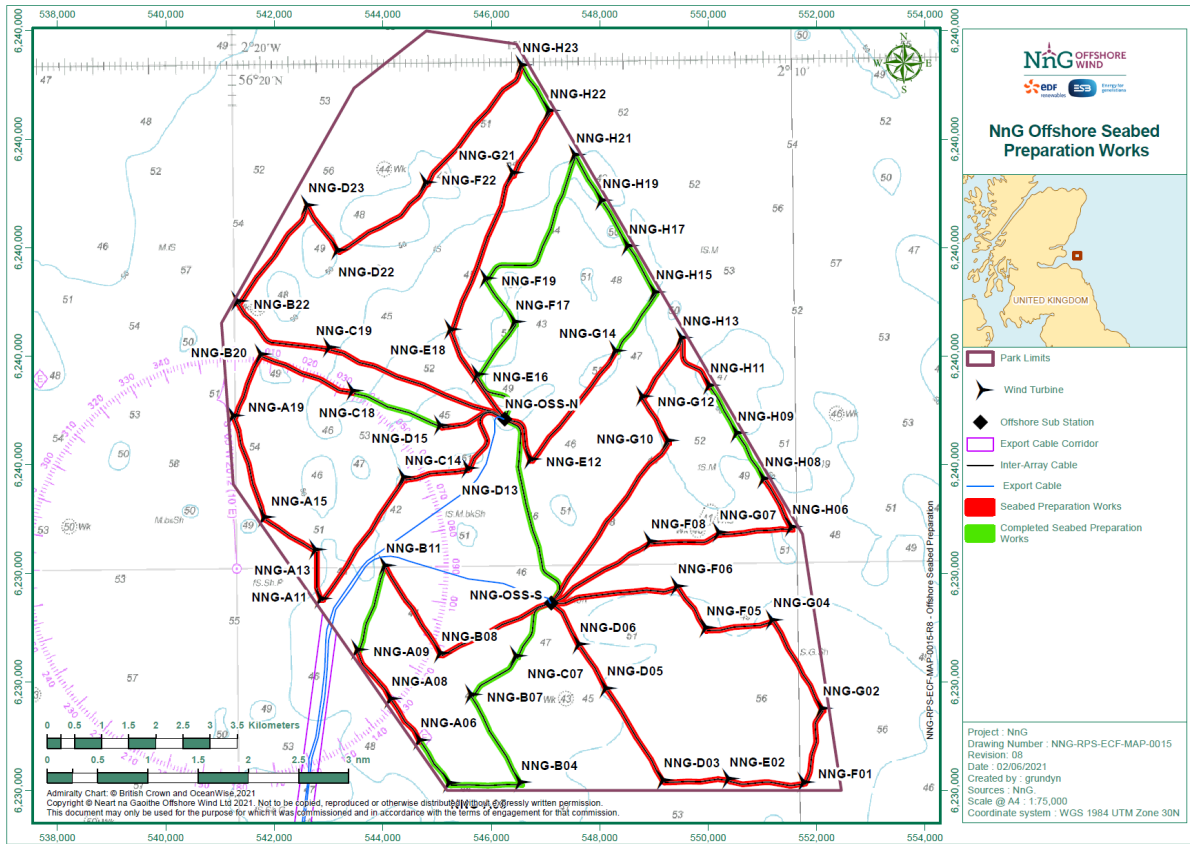



Figure 3 – Wind Farm Area showing Inter-array cable routes where boulder clearance remaining (Red)

Table 17 – Wind Farm Area Coordinates

	LONGITUDE (DD.MM.MMM)	LATITUDE (DD.MM.MMM)
<b>WIND FARM AREA</b>	002° 09.898' W	56° 15.271' N
	002° 09.255' W	56° 12.721' N
	002° 13.998' W	56° 12.752' N
	002° 16.293' W	56° 12.766' N
	002° 19.628' W	56° 15.479' N
	002° 20.055' W	56° 15.827' N
	002° 20.232' W	56° 17.430' N
	002° 17.826' W	56° 19.752' N
	002° 16.518' W	56° 20.312' N
002° 14.910' W	56° 20.171' N	

Table 18 – Sartor Vessel Details

Vessel name:	Sartor
Vessel role:	Boulder Relocation
Call sign:	3ESV4
Maritime Mobile Service Identity:	372633000
On board contact:	Contact name: Vessel Master

Vessel name:	Sartor
	Email: <a href="mailto:sartor.captain@hvessel.com">sartor.captain@hvessel.com</a> Phone: +44 (0) 7951 071 632 / Vsat +4753007246
Onshore representative:	Contact name: HSS Person on-call Phone: +44 (0) 7779 295 694
	

#### 4 Planned Operations

##### 4.1 Export Cable Installation

Mariners are advised that Neart na Gaoithe Offshore Wind Farm Limited (NnGOWL) is due to commence a pre-lay grapnel run (PLGR) and installation of the two export cables within the Neart Na Gaoithe (NnG) Export Cable Corridor. The PLGR is due to begin week commencing 14<sup>th</sup> June 2021, at the earliest, with the installation of the first export cable commencing thereafter. The PLGR will be completed by the vessel *Norne* (call sign: PCJR), whilst the two export cables will be installed by the cable lay vessel (CLV) *Cable Enterprise* (call sign: 2FOV9).

The PLGR will be completed using a grapnel towed from the vessel. The grapnel will be deployed to retrieve any potential abandoned fishing gear or ships crane wires that may be present along the Export Cable Routes. Any debris recovered to deck will be retained on board the vessel for disposal onshore.

For installation of each cable, laying will commence at the landfall, with the *Cable Enterprise* positioned as close to the horizontal directional drill (HDD) exit pit as possible, given the draught of the vessel. Once the CLV has laid the first approx. 750m of cable, a pull-in winch located onshore will draw this section through the HDD ducts. Once complete, the CLV will begin to lay the cable along the export cable route in the direction of the Wind Farm Area. A number of small rigid-hull inflatable boats (RHIB) and guard vessels will be patrolling the cable corridor, with a Crew Transfer Vessel *Celtic Guardian*, (call sign: 21ZH5) also supporting.

The vessels will be working within the area of the NnG Export Cable Corridor, illustrated in Figure 4, within the coordinates shown in Table 19.

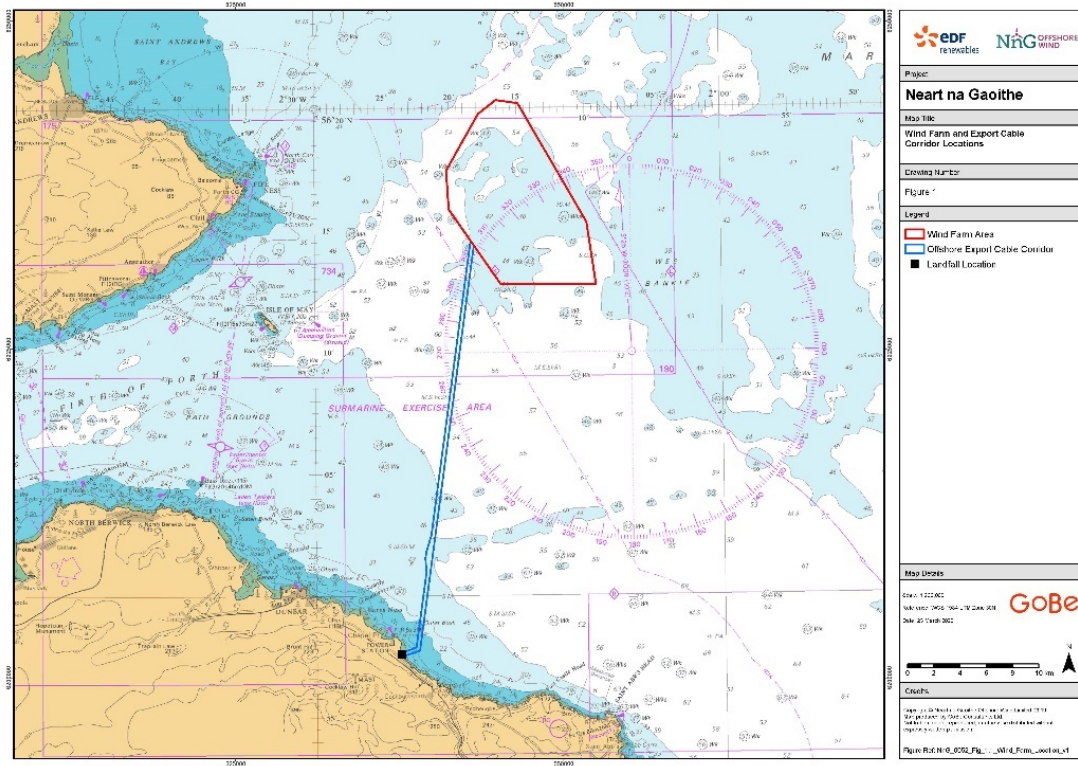


Figure 4 – Export Cable Corridor

Table 19 – Export Cable Corridor Coordinates

Export Cable Corridor Coordinates (WGS84)	
Longitude (DDM)	Latitude (DDM)
2° 22.472' W	55° 57.734' N
2° 23.539' W	55° 57.541' N
2° 23.802' W	55° 57.584' N
2° 23.820' W	55° 57.609' N
2° 23.636' W	55° 57.693' N
2° 22.729' W	55° 57.866' N
2° 21.938' W	56° 00.990' N
2° 21.951' W	56° 01.007' N
2° 22.005' W	56° 01.449' N
2° 22.004' W	56° 01.552' N
2° 21.932' W	56° 01.795' N
2° 21.563' W	56° 02.468' N
2° 18.479' W	56° 14.546' N
2° 18.237' W	56° 14.349' N

Masters of vessels are requested to maintain their vessels and gears at a minimum safe distance from both vessels of 500 metres when they are undertaking their work and showing the appropriate shapes and lights.

An exclusion area of 500m either side of each export cable route for static fishing gear is requested (Figure 5 and Table 27). Vessels with bottom-towed gear are requested to be kept clear of a reduced exclusion area once the cable laying commences, which will be notified by the Company Fisheries Liaison Officer.

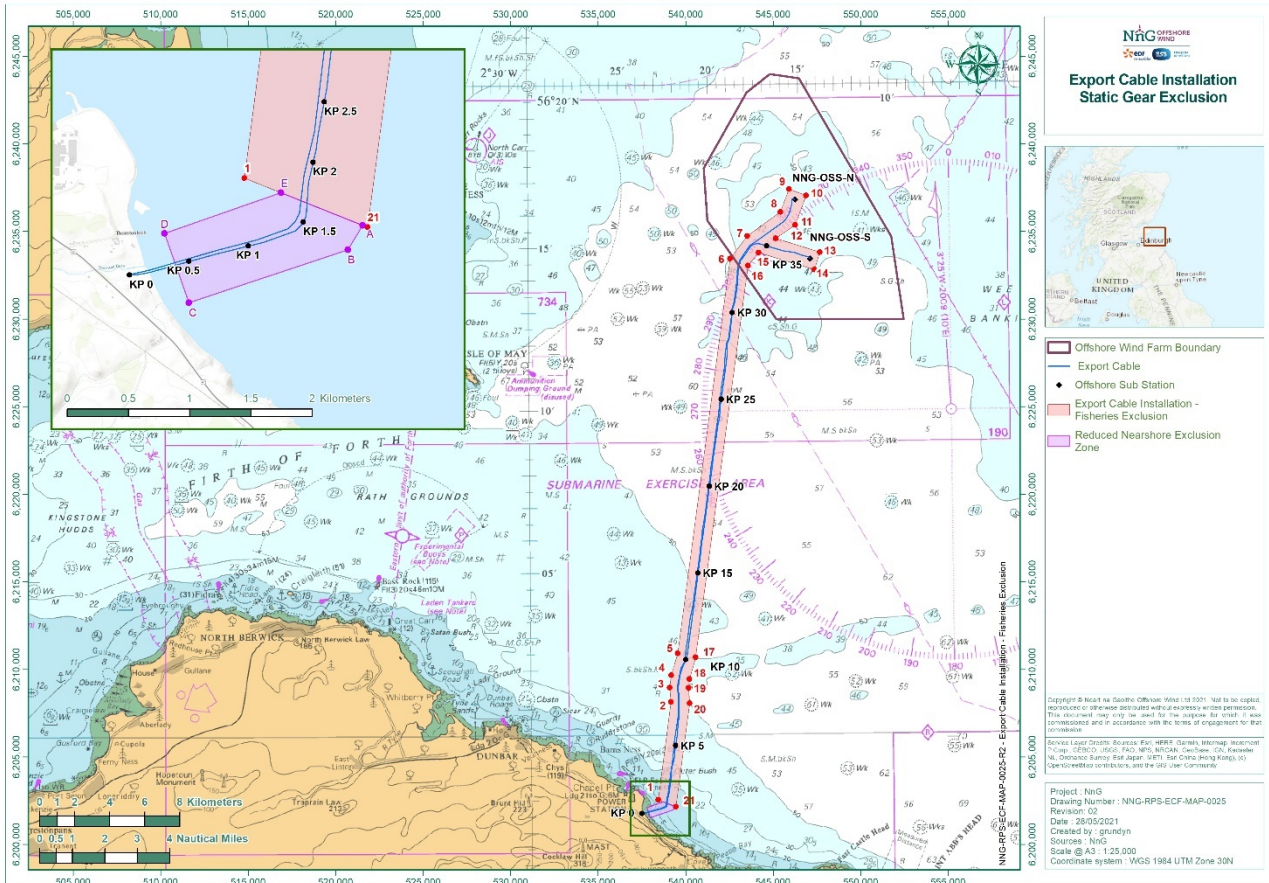


Figure 5 – Export Cable installation Static Gear Export Cable Exclusion Zone

Table 20 – Export Cable installation Static Gear Export Cable Exclusion Zone

ID	Export Cable Installation Static Gear Export Cable Exclusion Zone Coordinates (WGS84)	
	Longitude (DDM)	Latitude (DDM)
1	2° 23.058' W	55° 58.009' N
2	2° 22.314' W	56° 01.014' N
3	2° 22.368' W	56° 01.454' N
4	2° 22.287' W	56° 01.836' N
5	2° 21.917' W	56° 02.512' N
6	2° 18.822' W	56° 14.640' N
7	2° 17.858' W	56° 15.328' N

ID	Export Cable Installation Static Gear Export Cable Exclusion Zone Coordinates (WGS84)	
	Longitude (DDM)	Latitude (DDM)
8	2° 16.012' W	56° 16.061' N
9	2° 15.514' W	56° 16.760' N
10	2° 14.570' W	56° 16.557' N
11	2° 15.194' W	56° 15.662' N
12	2° 16.276' W	56° 15.248' N
13	2° 13.848' W	56° 14.814' N
14	2° 14.159' W	56° 14.275' N
15	2° 17.233' W	56° 14.818' N
16	2° 17.835' W	56° 14.420' N
17	2° 20.930' W	56° 02.383' N
18	2° 21.280' W	56° 01.717' N
19	2° 21.339' W	56° 01.440' N
20	2° 21.287' W	56° 00.971' N
21	2° 22.095' W	55° 57.787' N
ID	Nearshore Exclusion Zone Coordinates (WGS84)	
A	2° 22.132' W	55° 57.796' N
B	2° 22.251' W	55° 57.689' N
C	2° 23.501' W	55° 57.463' N
D	2° 23.687' W	55° 57.769' N
E	2° 22.772' W	55° 57.943' N

## Vessels Associated with the Activity

Table 21 - Norne Vessel Details

Vessel name:	Norne
Vessel role:	Pre-Lay Grapple Run Vessel
Call sign:	PCJR
Maritime Mobile Service Identity:	245460000
On board contact:	Contact name: Vessel Master Email: <a href="mailto:norne@koerts-its.eu">norne@koerts-its.eu</a> Phone: +44 203 1309591
Onshore representative:	Contact name: R. Koerts Email: <a href="mailto:dpa@koerts.eu">dpa@koerts.eu</a> Phone: +31 (6) 12343464



A spearpoint grapnel will be used by the *Norne*, which will consist of a shank with five prongs with reinforced tips. The grapnel will be 1.5m in length and 0.9m wide, with a total weight of 250kg (shown in Figure 6). The spearpoint grapnel will be connected to the *Norne* by a towing wire, and both gifford and rennie chain grapnels (shown in Figure 7).



Figure 6 - Spearpoint Grapnel

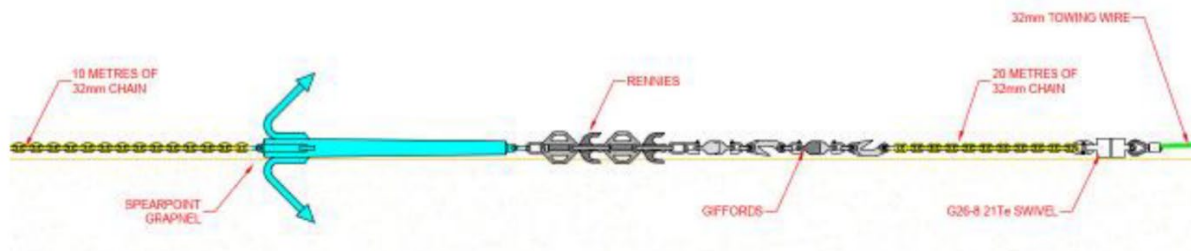


Figure 7 - Grapnel Train

Table 22 – Cable Enterprise Vessel Details

Vessel name:	Cable Enterprise
Vessel role:	Cable Installation Vessel
Call sign:	2FOV9
Maritime Mobile Service Identity:	235093018
On board contact:	Contact name: Vessel Master Email: ce.master@prysmiangroup.com Phone: +44 779 8764403
Onshore representative:	Contact name: Stefano Dalmasso Email: sdalmasso@seaworldmanagement.com

	Phone: +377 678 632642
	

Table 23 - Celtic Guardian Vessel

Vessel name:	Celtic Guardian
Vessel role:	Crew Transfer Vessel
Call sign:	21ZH5
Maritime Mobile Service Identity:	235114006
On board contact:	Contact name: Vessel Master – Iain Hill Email: iain.hill@specialisedmarinesupport.com Phone: 07540 944992
Onshore representative:	Contact name: Steven Foster Phone: +44 (0) 7425 623377



Table 24 - Morning Dawn Guard Vessel

Vessel name:	Morning Dawn
Vessel role:	Guard Vessel
Call sign:	MHEU3
On board contact:	Contact name: Vessel Master Email: bridge@morning-dawn.co.uk Phone: + 33 640 047722 / +44 1779 400158


Vessel name:	Morning Dawn
	

Table 25 – Courage Guard Vessel


Vessel name:	Courage
Vessel role:	Guard Vessel
Call sign:	MJDL4
On board contact:	Contact name: Vessel Master Email: <a href="mailto:couragesh170@gmail.com">couragesh170@gmail.com</a> Phone: +44 1261 877295 / +44 7766 833463
	

Table 26 - Shemarah II Guard Vessel

Vessel name:	Shemarah II
Vessel role:	Guard Vessel
Call sign:	MVRR7
On board contact:	Contact name: Vessel Master Email: <a href="mailto:donaldmoodie@moodiemarine.com">donaldmoodie@moodiemarine.com</a> Phone: +44 131 202 9850 / +44 7774 810625

Vessel name:	Shemarah II
	

**4.2 Pile Installation**

Mariners are advised that Neart na Gaoithe Offshore Wind Farm Limited (NnGOWL) is due to commence pile installation within the Neart Na Gaoithe (NnG) Wind Farm Area. The work is due to begin week commencing 14<sup>th</sup> June 2021, at the earliest.

In preparation for the jacket foundation installation, three piles for each wind turbine location and offshore substation platform will be installed. The piles will be installed by the *Saipem 3000 (S3000)* (call sign: C6SW6) into pre-drilled sockets. Pile installation support will be provided by the *Skandi Acergy* (call sign: LAFD7) offshore construction vessel, which will arrive to site in late June 2021. The *Skandi Acergy* will transfer supporting materials and installation equipment between positions on the seabed adjacent to each foundation location. On arrival at each location, the *S3000* will collect and utilise this wet-stored equipment during pile installation. Once the three piles have been positioned within the pre-drilled sockets, grout will be inserted to secure them in place.

A supply vessel will be utilised to transport piles to NnG wind farm, as required. Further information on the vessel for each visit will be provided on subsequent versions of the Vessel Report and the Weekly Notice of Operations.

Both vessels will work within the NnG Wind Farm Area, shown in Figure 8.

**All vessels are requested to remain at least 500 metres away from all work vessels and the static fishing gear remains as shown in Figure 8 and Table 27.**

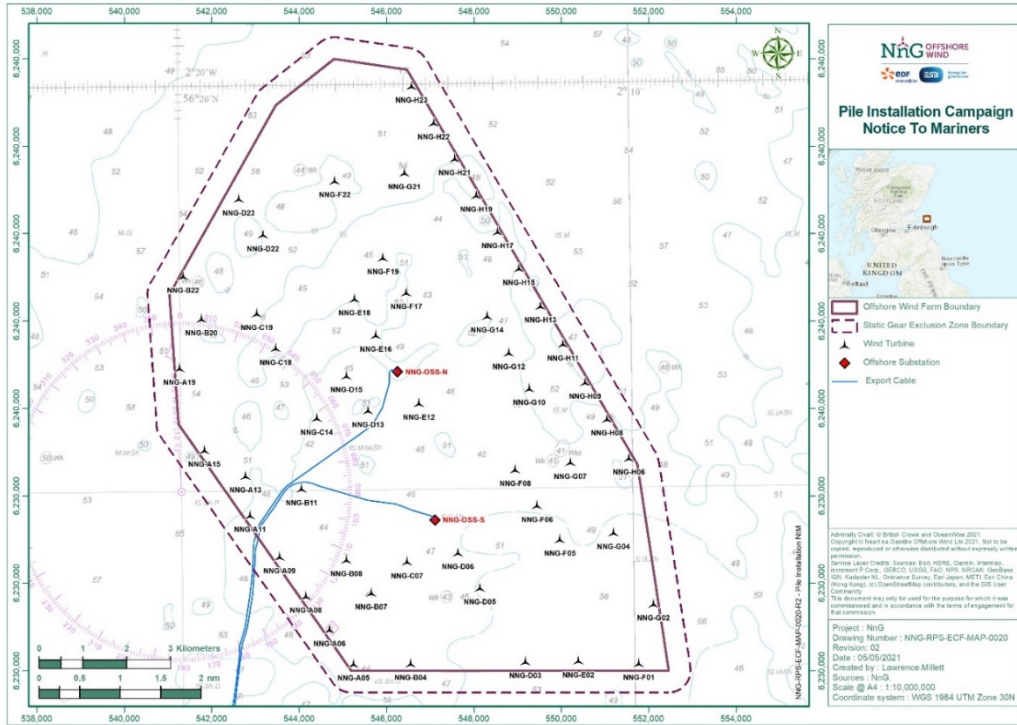


Figure 8 – NnG Offshore Wind Farm Area

Table 27 - Coordinates for NnG Offshore Wind Farm Area and Static Gear Exclusion Area

	LONGITUDE (DD.MM.MMM)	LATITUDE (DD.MM.MMM)		LONGITUDE (DD.MM.MMM)	LATITUDE (DD.MM.MMM)
<b>WIND FARM LEASE AREA</b>	002° 09.898' W	56° 15.271' N	<b>EXCLUSION TO STATIC GEAR</b>	002° 20.566' W	56° 15.680' N
	002° 13.998' W	56° 12.752' N		002° 20.849' W	56° 17.468' N
	002° 19.628' W	56° 15.479' N		002° 18.242' W	56° 19.938' N
	002° 20.232' W	56° 17.430' N		002° 16.611' W	56° 20.613' N
	002° 16.518' W	56° 20.312' N		002° 14.363' W	56° 20.392' N
	002° 09.255' W	56° 12.721' N		002° 09.300' W	56° 15.334' N
	002° 16.293' W	56° 12.766' N		002° 08.661' W	56° 12.651' N
	002° 20.055' W	56° 15.827' N		002° 09.058' W	56° 12.405' N
	002° 17.826' W	56° 19.752' N		002° 16.505' W	56° 12.410' N
002° 14.910' W	56° 20.171' N				

**Vessels Associated with the Activity**

Table 28 – S3000 Vessel Details

Vessel name:	Saipem 3000
Vessel role:	Pile Installation Vessel
Call sign:	C6SW6
Maritime Mobile Service Identity:	311516000
On board contact:	Contact name: Vessel Master Email: <a href="mailto:captain.s3000@saipem.com">captain.s3000@saipem.com</a> Phone: +39 02 010 24650


Onshore representative:	Contact name: Ben Stokes Email: <a href="mailto:Benjamin.Stokes@saipem.com">Benjamin.Stokes@saipem.com</a> Phone: +44 7833 479 546
	

Table 29 – Skandi Acergy Details

Vessel name:	Skandi Acergy
Vessel role:	Offshore Construction Vessel
Call sign:	LAFD7
Maritime Mobile Service Identity:	257691000
On board contact:	Contact name: Vessel Master Email: <a href="mailto:Acergy.captain@acergy.dof.no">Acergy.captain@acergy.dof.no</a> Phone V-Sat: +47 23 67 54 04 Or Vessel Bridge Contact Email: <a href="mailto:Acergy.bridge@acergy.dof.no">Acergy.bridge@acergy.dof.no</a> Phone V-Sat: +47 23 67 54 05
Onshore representative:	Contact name: Stig Rabben (Designated Person Ashore – DPA) Email: <a href="mailto:Stig.Rabben@dof.com">Stig.Rabben@dof.com</a> Phone: +47 992 03 609

Vessel name:	Skandi Acergy
	

**5 Other Notices**

**5.1 Notification of Seabed Hazard at Location NNG-H17 –Dropped Object (NtM 149)**

Mariners are advised that during operations on Neart na Gaoithe Offshore Wind Farm Limited (NnGOWL) a piece of equipment has been deposited on the seabed and forms a temporary hazard, until recovery is performed. The equipment has been deposited at Wind Turbine Generator (WTG) location NNG-H17, within the boundaries of the Neart na Gaoithe (NnG) offshore wind farm area.

*Table 30 – NnG dropped object details*

	LONGITUDE (DMM)	LATITUDE (DMM)	MAX. HEIGHT ABOVE SEABED	MIN. DEPTH BELOW LAT*
<b>Dropped Object</b>	2° 12.9492758' W	56° 18.1335714' N	38.23 m	12.12 m

\*Lowest Astronomical Tide

The deposit occurred during drilling and casing installation operations from the Saipem 7000. The S7000 has departed the Neart na Gaoithe (NnG) offshore wind farm area, however the location of the item is marked by a Guard Vessel and an exclusion zone is implemented. Navigation warnings will be issued until the item is recovered.

**6 General Safety Advice**

All vessels engaged in the construction activity will exhibit appropriate lights and shapes prescribed by the International Regulations for Preventing Collisions at Sea; relative to their operations. All vessels engaged in the activity will also transmit an Automatic Identification System (AIS) message. Mariners are requested to navigate with caution and keep continued watch on VHF Ch. 16, when navigating the area.

Please be aware that by virtue of their mode of operation and the equipment deployed vessels will be Restricted in their Ability to Manoeuvre (RAM) as defined under COLREGs (International Regulations for Preventing Collisions at Sea 1972, Rule 3). Masters of vessels are therefore requested to maintain their vessels and gears at a minimum safe distance from these vessels of 500 metres when it is undertaking it work and showing the appropriate shapes and lights in accordance with COLREGs Rule 18.

Use of Safety Zones within the Neart na Gaoithe Offshore Wind Farm Construction Area is as follows:

- Mandatory “rolling” 500 metres (m) Safety Zones will be established around each wind farm structure (turbines and Offshore Substation Platforms (OSP)) and/or their foundations whilst construction works are in progress,

as indicated by the presence of a construction vessel. Up to ten of these Safety Zones may be active at any given time.

The duty Guard Vessels and Marine Coordination Centre will be responsible for monitoring and policing the Safety Zones; and can be contacted directly for advice. Users are advised to keep clear of construction activities, including Safety Zones.

## 7 Fisheries Liaison

Fisheries liaison associated with the activity will be co-ordinated by the Company Fisheries Liaison Officer. For any commercial fishery queries please contact: Peter Berney, telephone: +44 (0)7391 402387 or email: [NnG.FLO@naturalpower.com](mailto:NnG.FLO@naturalpower.com). For any other general queries please contact [info@nngoffshorewind.com](mailto:info@nngoffshorewind.com).