

Date of issue:	02/04/2021
Period covered:	24/03/2021 – 07/04/2021
Notice number:	034
Author:	Liam Rogers

Construction of the Neart na Gaoithe (NnG) Offshore Wind Farm is ongoing. This notice is updated weekly giving information on the progress and resources involved in the offshore works. The intention is to give an overview of activities and vessels involved. Questions regarding the operations are welcomed, preferably well in advance of each construction activity.

Current works include;

1. Casing and pile installation within the wind farm area (Section 3.1)
2. Guard vessel duties (Section 3.2)
3. Nearshore pre-cable installation works (Section 3.3)
4. Offshore Seabed Preparation (Section 3.4)

Planned operations include;

1. Maintenance of Construction Buoyage (Section 4.1)

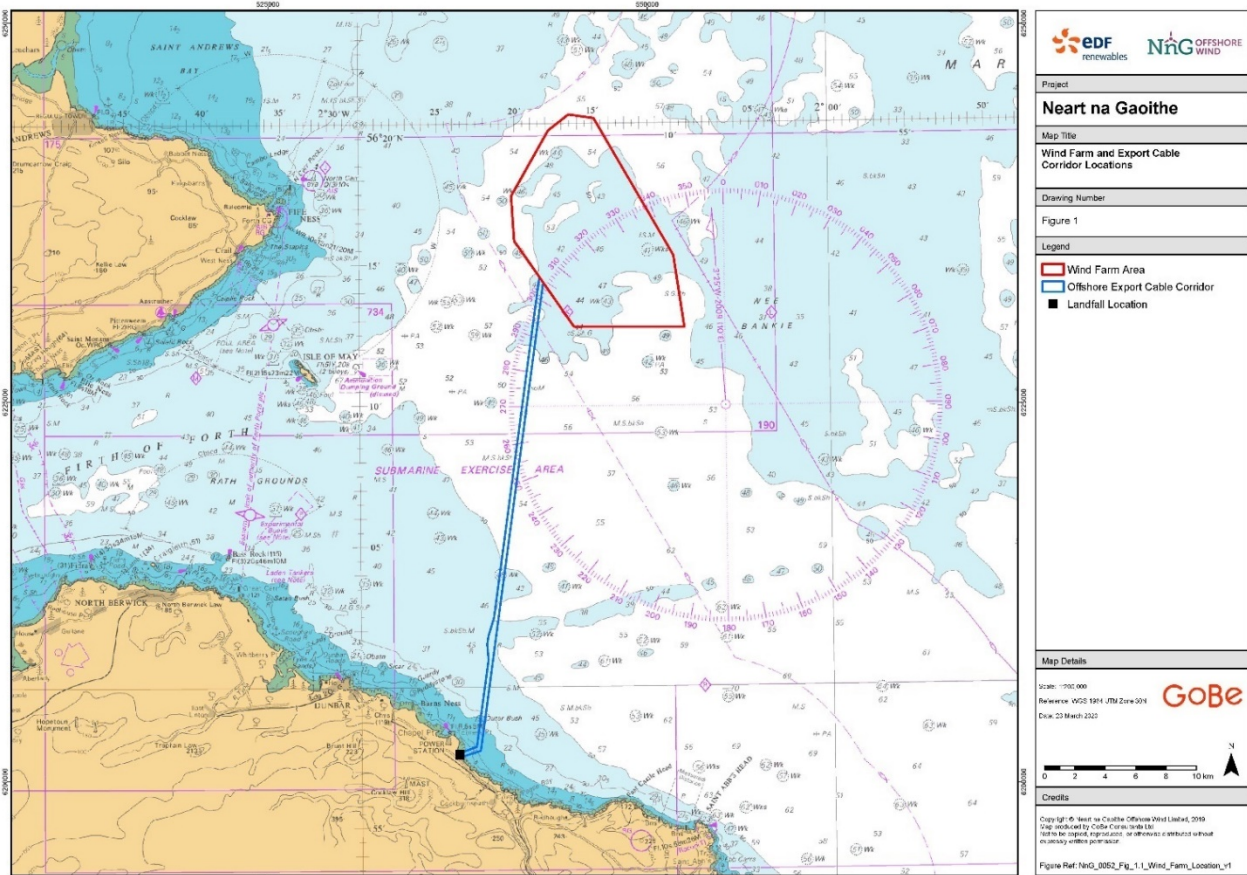


Figure 1 Neart na Gaoithe (NnG) Offshore Wind Farm area and Export Cable Corridor

1 Marine Coordination Contact Details

The following contact can provide more information if required. Please note that specific queries can also be addressed to the relevant vessel or shore-based representative.

Table 1 Marine Coordination Contact Details

Telephone number (daytime operations):	+44 (0)7508421406 / +44 (0)1890 751415
Emergency contact (24/7):	+44 (0)7508421406 / +44 (0)1890 751415
Email:	nng.mc@smchse.com
Address:	NnG Offshore Wind Farm Marine Coordination Centre Gunsreen Basin Eyemouth TD14 5SD

2 Completed Operations

2.1 Drilling and Casing Installation

Casing installation operations have been successfully completed at the locations listed in Table 4 below. The coordinates of each casing installed, and the casing stick-up (above seabed) can be found at: <https://nngoffshorewind.info/>

2.2 Export Cable Landfall – HDD Marine Works

As of 4th March 2021, NnGOWL has completed the HDD supporting works within the nearshore extent of the Export Cable Corridor. Ducting has now been installed at HDD1 and HDD2, the position and stick-up above seabed is provided in Table 2. Two surface marker buoys are in place to notify of this.

Table 2 - HDD Ducting Stick up and location

Exit Pit	Longitude (DDM)	Latitude (DDM)	Stick-up
HDD 1	002° 23.296' W	55° 57.676' N	Approx. 1.3m
HDD 2	002° 23.282' W	55° 57.694' N	Approx. 1.50m

2.3 Maintenance of Acoustic Monitoring Devices

The renewal and maintenance works was successfully undertaken on the four Acoustic Monitoring Devices within the boundaries of the Neart na Gaoithe Offshore wind Farm and surrounding waters. Revision 2.0 of the Notice to Mariners was issued on 31st March 2021 advising of an update to the coordinates for NNG3, which can be found in Table 3 below.

Table 3 – Acoustic Monitoring Device Coordinates

Device	Longitude (DDM) (WGS84)	Latitude (DDM) (WGS84)
NNG1	002° 19.154' W	056° 17.880' N
NNG2	002° 15.239' W	056° 15.145' N
NNG3	002° 10.017' W	056° 16.362' N
NNG4	002° 05.406' W	056° 16.340' N

Table 5 Coordinates of NnG Turbine Locations and anticipated locations of work (green highlight) – complete locations are shaded (grey)

TURBINE ID	LONGITUDE (DD.MM.MMM)	LATITUDE (DD.MM.MMM)	TURBINE ID	LONGITUDE (DD.MM.MMM)	LATITUDE (DD.MM.MMM)
NNG-A13	002° 18.580' W	56° 15.153' N	NNG-F22	002° 16.536' W	56° 18.785' N
NNG-A11	002° 18.489' W	56° 14.668' N	NNG-F19	002° 15.487' W	56° 17.828' N
NNG-A09	002° 17.845' W	56° 14.153' N	NNG-F17	002° 14.978' W	56° 17.394' N
NNG-A08	002° 17.267' W	56° 13.665' N	NNG-F08	002° 12.603' W	56° 15.198' N
NNG-A06	002° 16.755' W	56° 13.248' N	NNG-F06	002° 12.129' W	56° 14.751' N
NNG-A05	002° 16.231' W	56° 12.822' N	NNG-F05	002° 11.632' W	56° 14.330' N
NNG-B22	002° 19.921' W	56° 17.623' N	NNG-G21	002° 14.988' W	56° 18.873' N
NNG-B20	002° 19.521' W	56° 17.097' N	NNG-G14	002° 13.181' W	56° 17.095' N
NNG-B11	002° 17.341' W	56° 14.989' N	NNG-G12	002° 12.715' W	56° 16.640' N
NNG-B08	002° 16.365' W	56° 14.109' N	NNG-G10	002° 12.270' W	56° 16.197' N
NNG-B07	002° 15.822' W	56° 13.695' N	NNG-G07	002° 11.379' W	56° 15.279' N
NNG-B04	002° 14.964' W	56° 12.817' N	NNG-G04	002° 10.435' W	56° 14.405' N
NNG-C19	002° 18.293' W	56° 17.155' N	NNG-G02	002° 09.572' W	56° 13.520' N
NNG-C18	002° 17.882' W	56° 16.725' N	NNG-H23	002° 14.806' W	56° 19.943' N
NNG-C14	002° 16.984' W	56° 15.858' N	NNG-H22	002° 14.322' W	56° 19.488' N
NNG-C07	002° 15.017' W	56° 14.076' N	NNG-H21	002° 13.865' W	56° 19.043' N
NNG-D23	002° 18.666' W	56° 18.572' N	NNG-H19	002° 13.397' W	56° 18.588' N
NNG-D22	002° 18.135' W	56° 18.127' N	NNG-H17	002° 12.932' W	56° 18.134' N
NNG-D15	002° 16.321' W	56° 16.376' N	NNG-H15	002° 12.466' W	56° 17.677' N
NNG-D13	002° 15.848' W	56° 15.946' N	NNG-H13	002° 11.997' W	56° 17.214' N
NNG-D06	002° 13.894' W	56° 14.179' N	NNG-A19	002° 20.015' W	56° 16.490' N
NNG-D05	002° 13.417' W	56° 13.744' N	NNG-A15	002° 19.484' W	56° 15.474' N
NNG-D03	002° 12.421' W	56° 12.828' N	NNG-F01	002° 09.915' W	56° 12.0790' N
NNG-E18	002° 16.122' W	56° 17.324' N	NNG-H11	002° 11.513' W	56° 16.740' N
NNG-E16	002° 15.658' W	56° 16.874' N	NNG-H09	002° 11.027' W	56° 16.263' N
NNG-E12	002° 14.720' W	56° 16.029' N	NNG-H08	002° 10.555' W	56° 15.808' N
NNG-E02	002° 11.251' W	56° 12.829' N	NNG-H06	002° 10.079' W	56° 15.324' N

Table 6 Coordinates of NnG Offshore Substation Platform (OSP) Locations and first anticipated locations of work (green highlight)


OSP ID	LONGITUDE (DD.MM.MMM)	LATITUDE (DD.MM.MMM)	OSP ID	LONGITUDE (DD.MM.MMM)	LATITUDE (DD.MM.MMM)
NNG-OSS-S	002° 14.395' W	56° 14.615' N	NNG-OSS-N	002° 15.193' W	56° 16.446' N

Table 7 Casing Installation Vessel; Saipem 7000

Vessel name:	Saipem 7000
Vessel type and Dimensions:	Heavy Lift Vessel LOA: 175.0m, Beam: 87.0m, Draught: 27.5m (Operating)
Vessel role:	Drilling and Casing Installation.
Location of operations:	NNG-H09 NNG-H11 NNG-C07
Call sign:	C6NO
Maritime Mobile Service Identity:	309461000
On board contact:	NnG Client Representative S7000-Rep@nngoffshorewind.com
Onshore representative:	Mick Hoyle Mick.hoyle@nngoffshorewind.com +44(0)7881102695



Table 8 Casing Supply Vessel; Sea Gull

Vessel name:	Sea Gull
Vessel type and Dimensions:	Platform Supply Vessel (PSV) LOA: 88.8m, Beam: 20.0m, Draught: 6.9m
Vessel role:	Transportation of casings from Marshalling Port (Leith) to S7000
Location of operations:	Leith – NnG Offshore Wind Farm as required
Call sign:	LAGK8
Maritime Mobile Service Identity:	257504000
On board contact:	NnG Client Representative S7000-Rep@nngoffshorewind.com
Onshore representative:	Mick Hoyle Mick.hoyle@nngoffshorewind.com +44(0)7881102695
	

3.2 Guard Vessels

SFF Services has been appointed by NnGOWL to provide guard vessels during the Construction of NnG Offshore Wind Farm. Apart from times of extreme weather, there will always be at least two guard vessels on site, to cover the Wind Farm Area and Export Cable Corridor. The guard vessel’s primary duty is security of the construction site by informing and warning non-construction vessels of the ongoing activities and associated Safety Zones.

Table 9 Guard Vessel; Artemis

Vessel name:	Artemis
Vessel type and Dimensions:	Guard Vessel LOA: 27.69m, Beam: 8.7m, Draught: 5.1m
Vessel role:	Guard Vessel Duties
Location of operations:	Offshore Wind Farm until 05/04/2021
Call sign:	MVIX5
Maritime Mobile Service Identity:	233975000


On board contact:	Vessel Master concordeb47@aol.com
Onshore representative:	Martin Malone Martin.malone@nngoffshorewind.com +44(0)7880439480
	

Table 10 Guard Vessel; Tranquillity S


Vessel name:	Tranquillity S
Vessel type and Dimensions:	Guard Vessel LOA: 19.0m, Beam: 7.0m, Draught: 2.63m
Vessel role:	Guard Vessel Duties
Location of operations:	Return to Offshore Wind Farm on 05/04/2021
Call sign:	MJUH9
Maritime Mobile Service Identity:	235053837
On board contact:	Vessel Master spousekeil@yahoo.com
Onshore representative:	Martin Malone Martin.malone@nngoffshorewind.com +44(0)7880439480
	

Table 11 Guard Vessel; Seagull

Vessel name:	Seagull
Vessel type and Dimensions:	Guard Vessel LOA: 30.0m, Beam: 8.0m, Draught: 4.9m
Vessel role:	Guard Vessel Duties
Location of operations:	Offshore Wind Farm until 19/04/2021
Call sign:	MVBO2
Maritime Mobile Service Identity:	233714000
On board contact:	Vessel Master seagullbf74@gmail.com
Onshore representative:	Martin Malone Martin.malone@nngoffshorewind.com +44(0)7880439480
	

3.3 Nearshore pre-cable installation works

Mariners are advised that Neart na Gaoithe Offshore Wind Farm Limited (NnGOWL) have commenced preparation works for the export cable installation, within the nearshore extent of the Export Cable Corridor. Two jack-up vessels, *Capall Mara (MBSF3)* and *C57 Red Squirrel (J8B5722)*, will carry out a small amount of seabed preparation operations and undertake trenching works along a short section of the nearshore cable route.

The *Capall Mara* backhoe dredger will work along the two cables routes within the nearshore area, a first pass will be made where the vessel will reposition boulders between KP0.65 and KP1.4 (Figure 3), followed by a second pass of each route where the vessel will excavate a trench within which the cable will be laid. Excavated material will be temporarily repositioned to the side of the trench and will be backfilled by the *Capall Mara* once the nearshore cable installation is completed.

C57 Red Squirrel will work at KP0.65, to excavate two pits at the existing HDD exits and conduct minor construction works associated with the HDD exit point. The jack up vessel *C57 Red Squirrel* will arrive on site supported by two tugs, either *Forth Trojan (2FYM4)*, and/or *Forth Drummer (2FIG9)*, and/or *The Battler (MGHD9)*.

A Crew Transfer Vessel, *Celtic Guardian (21ZH5)*, will transfer personnel between the *Capall Mara* and *C57 Red Squirrel* and Eyemouth harbour each day. *Celtic Guardian* will also support with periodic minor surveys of the route. A dive vessel, *CRC Tempest (MYUY7)* will also work alongside the *C57 Red Squirrel* providing dive support associated with the minor HDD Construction works, as required.

Vessels are requested to remain at least 500 metres away from the *Capall Mara* and *C57 Red Squirrel*. Static fishing gear is requested to remain removed from the updated exclusion area shown in Figure 3 and Table 11.

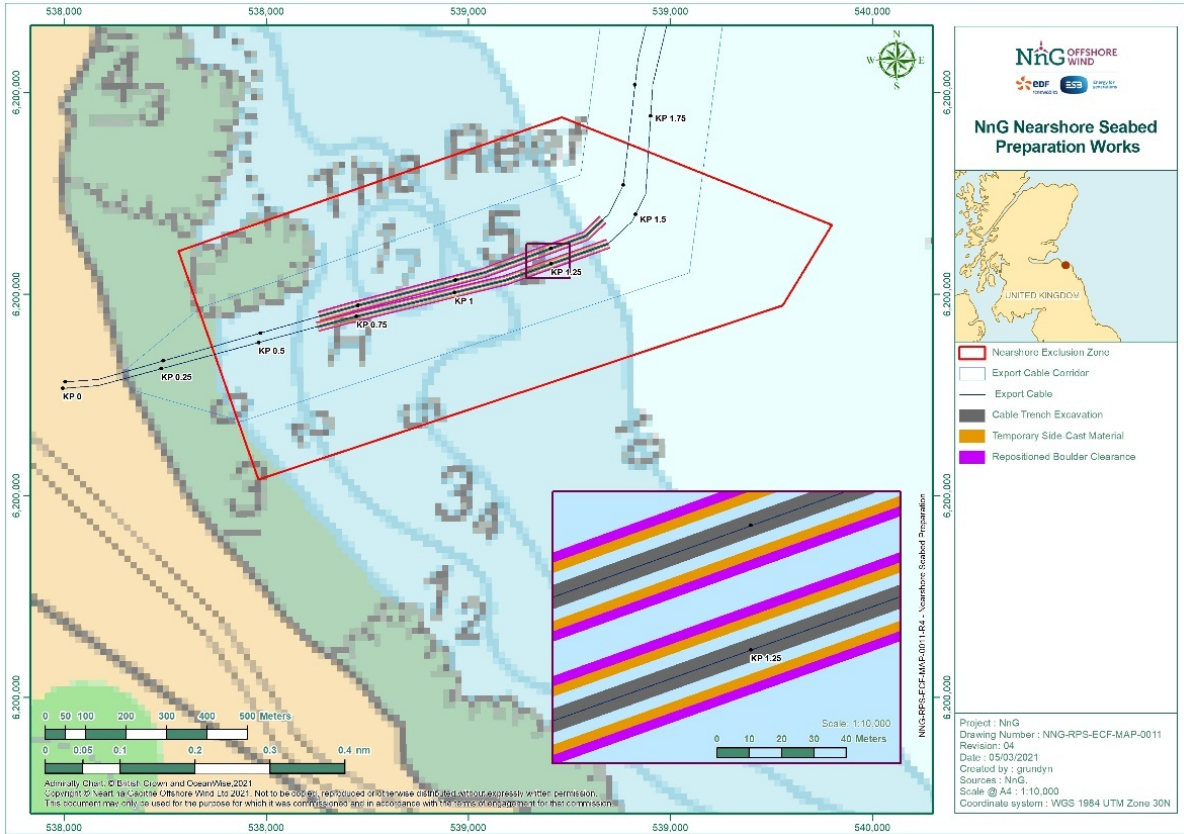


Figure 3 - Location of nearshore pre-cable installation works and nearshore exclusion zone

Table 12 - Nearshore Exclusion Zone Coordinates

Polygon Point	Nearshore Exclusion Zone Coordinates (WGS84)	
	Longitude (DDM)	Latitude (DDM)
1	2° 23' 41.2115" W	55° 57.7687' N
2	2° 22' 46.3260" W	55° 57.9432' N
3	2° 22' 07.9201" W	55° 57.7960' N
4	2° 22' 15.0439" W	55° 57.6890' N
5	2° 23' 30.0843" W	55° 57.4629' N

Table 13 Nearshore Jack-Up Barge (JUB); Capall Mara

Vessel name:	Capall Mara
Vessel role:	Nearshore Jack-Up Barge
Call sign:	MBSF3
Maritime Mobile Service Identity:	232010652
On board contact:	Contact name: Vessel Master Email: capallmara@abcomarine.co.uk Phone: +44 (0) 7711 498085


Onshore representative:	Contact name: Lorna Emmet Email: lornaemmet@abconearshore.co.uk Phone: +44 (0) 7889 584593
	

Table 14 Nearshore Jack-Up Barge (JUB); C57 Red Squirrel


Vessel name:	C57 Red Squirrel
Vessel role:	Nearshore Jack-Up Barge
Call sign:	J8B5722
Maritime Mobile Service Identity:	377744000
On board contact:	Contact name: Vessel Master Email: C57@abcomarine.co.uk Phone: +47 4768 8807
Onshore representative:	Contact name: Lorna Emmet Email: lornaemmet@abconearshore.co.uk Phone: +44 (0) 7889 584593
	

Table 15 Tug; Forth Trojan

Vessel name:	Forth Trojan
Vessel role:	Tug
Call sign:	2FYM4
Maritime Mobile Service Identity:	235095311


On board contact:	Contact name: Alan Henderson Email: AHenderson@briggsmarine.com Phone: +44 1592 871 906 / +44 7736 496 708
Onshore representative:	Contact name: Lorna Emmet Email: lornaemmet@abconearshore.co.uk Phone: +44 (0) 7889 584593
 <p>© Ashley Hunn MarineTraffic.com</p>	

Table 16 Tug; Battler

Vessel name:	Battler
Vessel role:	Tug
Call sign:	MGHD9
Maritime Mobile Service Identity:	235021512
On board contact:	Contact name: Sean Harrington Email: sean@atlantictowage.com Phone: +353 (0) 8685 95701
Onshore representative:	Contact name: Lorna Emmet Email: lornaemmet@abconearshore.co.uk Phone: +44 (0) 7889 584593
	

Table 17 Tug; Forth Drummer

Vessel name:	Forth Drummer
Vessel role:	Tug

Call sign:	2FIG9
Maritime Mobile Service Identity:	235091503
On board contact:	Contact name: Alan Henderson Email: AHenderson@briggsmarine.com Phone: +44 1592 871 906 / +44 7736 496 708
Onshore representative:	Contact name: Lorna Emmet Email: lornaemmet@abconearshore.co.uk Phone: +44 (0) 7889 584593

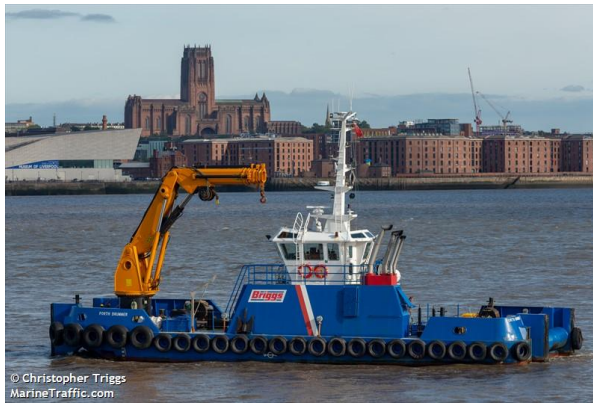



Table 18 Crew Transfer Vessel (CTV) and Survey Vessel; Celtic Guardian

Vessel name:	Celtic Guardian
Vessel role:	Crew Transfer Vessel and Survey Vessel
Call sign:	21ZH5
Maritime Mobile Service Identity:	235114006
On board contact:	Contact name: Vessel Master – Iain Hill Email: iain.hill@specialisedmarinesupport.com Phone: 07540 944992
Onshore representative:	Contact name: Steven Foster Phone: +44 (0) 7425 623377



Table 19 Dive Support Vessel (DSV); Tempest

Vessel name:	Tempest
Vessel role:	Dive Support Vessel
Call sign:	MYUY7
Maritime Mobile Service Identity:	232003835
On board contact:	Contact name: Rob Merrix Email: crctempest@commercialribcharter.co.uk
Onshore representative:	Contact name: Lorna Emmet Email: lornaemmet@abconearshore.co.uk Phone: +44 (0) 7889 584593
	

3.4 Offshore Seabed Preparation

Mariners are advised that Neart na Gaoithe Offshore Wind Farm Limited (NnGOWL) have recommenced the remaining seabed preparation works within the Wind Farm Area. The works recommenced on the 1st April 2021.

A single vessel, *Sartor (3ESV4)*, is undertaking the remaining boulder relocation operations in preparation for installation of the inter array cables in the Wind Farm Area.

Relocation of boulders in areas of inter array cable infrastructure is a critical pre-construction activity to reduce significant Health and Safety risks to the construction phase. Boulders will be relocated a short distance from their existing position only.

Area of Operations

Mariners are advised that the *Sartor* will be mobilised to work within the Neart na Gaoithe (NnG) Wind Farm Area, shown in Figure 4. The Wind Farm Area coordinates are provided in Table 19. The works are expected to last approximately six months, weather dependent.

Vessels are requested to remain at least 500 metres away from the work vessel and static gear is requested to be kept clear of the wind farm area.

Table 20 – Wind Farm Area Coordinates

	LONGITUDE (DD.MM.MMM)	LATITUDE (DD.MM.MMM)
WIND FARM AREA	002° 09.898' W	56° 15.271' N
	002° 09.255' W	56° 12.721' N

	LONGITUDE (DD.MM.MMM)	LATITUDE (DD.MM.MMM)
	002° 13.998' W	56° 12.752' N
	002° 16.293' W	56° 12.766' N
	002° 19.628' W	56° 15.479' N
	002° 20.055' W	56° 15.827' N
	002° 20.232' W	56° 17.430' N
	002° 17.826' W	56° 19.752' N
	002° 16.518' W	56° 20.312' N
	002° 14.910' W	56° 20.171' N

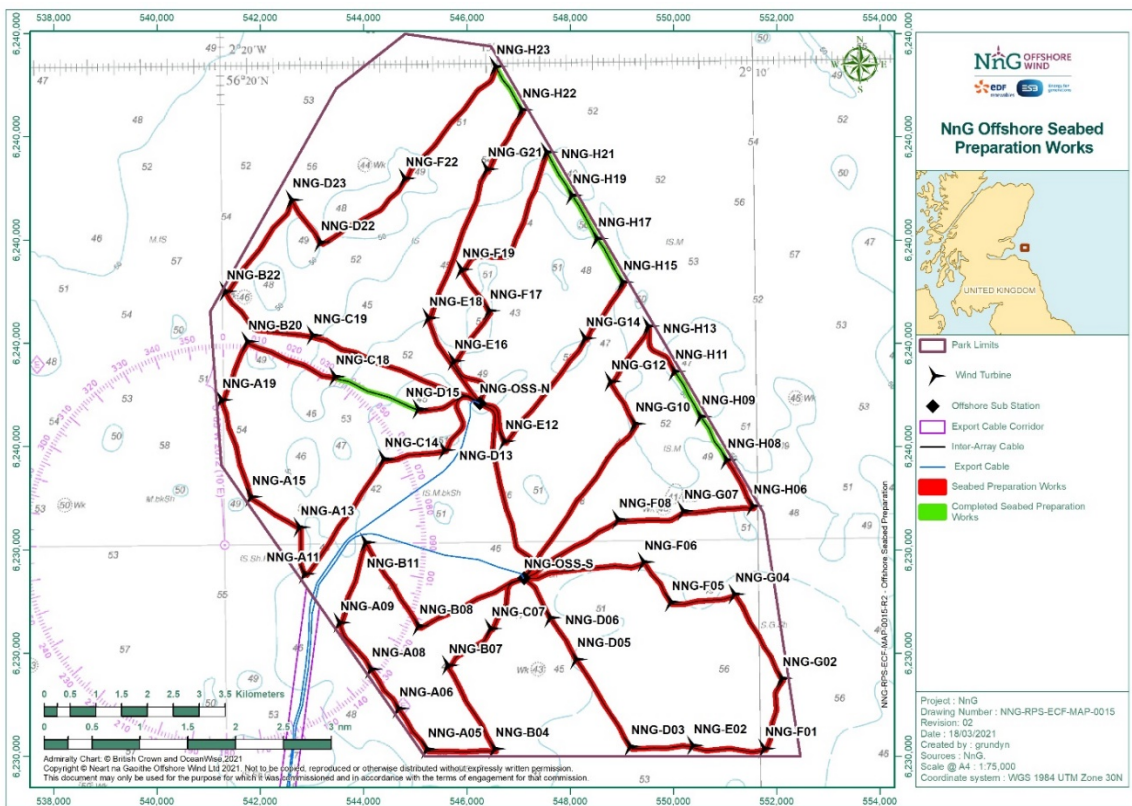


Figure 4 – Wind Farm Area showing Inter-array cable routes where boulder clearance remaining

Table 21 – Sartor Vessel Details

Vessel name:	Sartor
Vessel role:	Boulder Relocation
Call sign:	3ESV4
Maritime Mobile Service Identity:	372633000
On board contact:	Contact name: Vessel Master Email: sartor.captain@hvessel.com Phone: +44 (0) 7951 071 632 / Vsat +4753007246
Onshore representative:	Contact name: HSS Person on-call Phone: +44 (0) 7779 295 694

Vessel name:	Sartor
	

4 Planned Operations

4.1 Maintenance of Construction Buoyage

Mariners are advised that renewal and maintenance works will be undertaken on the four cardinal buoys and five special marks located around the boundaries of the Neart na Gaoithe Offshore wind Farm and surrounding waters, from the 26th March at the earliest. The work will take place over a period of 6 days, weather permitting, by the *Cameron* (MYEK6).

Area of Operations

The *Cameron* will likely mobilise from Burntisland to work around the boundaries of the Neart na Gaoithe (NnG) Offshore Wind Farm, shown in Figure 5. The position of the four cardinal buoys and five special markers are indicated by the coordinates in Table 21.

Table 22 – Cardinal Buoy Coordinates

Device	Longitude (DDM) (WGS84)	Latitude (DDM) (WGS84)
NNG N – North Cardinal	002° 14.616' W	56° 20.424' N
NNG E – East Cardinal	002° 08.557' W	56° 14.329' N
NNG S – South Cardinal	002° 09.760' W	56° 12.293' N
NNG W – West Cardinal	002° 21.083' W	56° 17.057' N
SP1 - Special Mark - Fl Y 5s light character	002° 12.0750' W	56° 18.1802' N
SP2- Special Mark - Fl Y 5s light character	002° 09.3293' W	56° 15.6430' N
SP3- Special Mark - Fl Y 5s light character	002° 15.7965' W	56° 12.2937' N
SP4 - Special Mark - Fl Y 5s light character	002° 18.9735' W	56° 14.0385' N
SP5 - Special Mark - Fl Y 5s light character	002° 18.9508' W	56° 18.9243' N

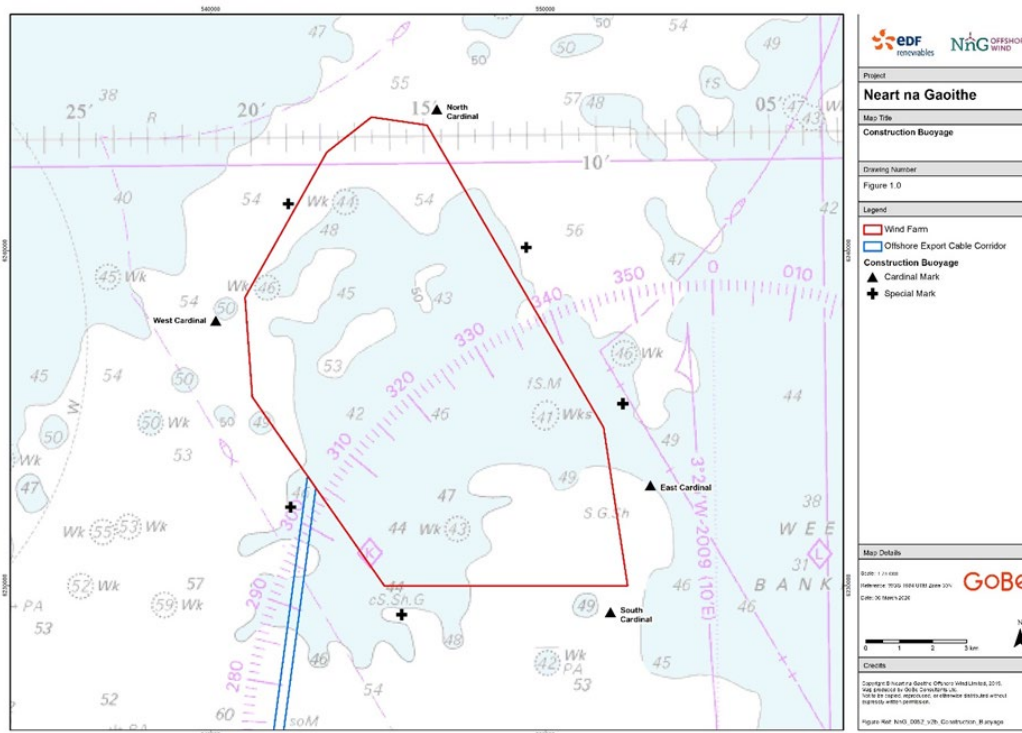


Figure 5 – As-laid positions of Neart na Gaoithe Cardinal Buoys


Schedule

The buoys have been deployed for the duration of the construction of Neart na Gaoithe Offshore Wind Farm. Each will be inspected and maintained at least every twelve months.

Vessels Associated with the Activity

Table 23 – Cameron Vessel Details

Vessel name:	Cameron
Vessel role:	Mooring Vessel
Call sign:	MYEK6
Maritime Mobile Service Identity:	232004102
On board contact:	Contact name: Saul King Phone: +44 (0) 7715 496 078
Onshore representative:	Contact name: Malcolm Duncan Email: MDuncan@briggsmarine.com Phone: +44 (0) 7711 373 209

Vessel name:	Cameron
	

5 General Safety Advice

All vessels engaged in the construction activity will exhibit appropriate lights and shapes prescribed by the International Regulations for Preventing Collisions at Sea; relative to their operations. All vessels engaged in the activity will also transmit an Automatic Identification System (AIS) message. Mariners are requested to navigate with caution and keep continued watch on VHF Ch. 16, when navigating the area.

Please be aware that by virtue of their mode of operation and the equipment deployed vessels will be Restricted in their Ability to Manoeuvre (RAM) as defined under COLREGs (International Regulations for Preventing Collisions at Sea 1972, Rule 3). Masters of vessels are therefore requested to maintain their vessels and gears at a minimum safe distance from these vessels of 500 metres when it is undertaking it work and showing the appropriate shapes and lights in accordance with COLREGs Rule 18.

Use of Safety Zones within the Neart na Gaoithe Offshore Wind Farm Construction Area is as follows:

- Mandatory “rolling” 500 metres (m) Safety Zones will be established around each wind farm structure (turbines and Offshore Substation Platforms (OSP)) and/or their foundations whilst construction works are in progress, as indicated by the presence of a construction vessel. Up to ten of these Safety Zones may be active at any given time.

The duty Guard Vessels and Marine Coordination Centre will be responsible for monitoring and policing the Safety Zones; and can be contacted directly for advice. Users are advised to keep clear of construction activities, including Safety Zones.

6 Fisheries Liaison

Fisheries liaison associated with the activity will be co-ordinated by the Company Fisheries Liaison Officer. For any commercial fishery queries please contact: Peter Berney, telephone: +44 (0)7391 402387 or email: NnG.FLO@naturalpower.com. For any other general queries please contact info@nngoffshorewind.com.