

Date of issue:	19/02/2021
Period covered:	10/02/2021 – 24/02/2021
Notice number:	028
Author:	Liam Rogers

Construction of the Neart na Gaoithe (NnG) Offshore Wind Farm is ongoing. This notice is updated weekly giving information on the progress and resources involved in the offshore works. The intention is to give an overview of activities and vessels involved. Questions regarding the operations are welcomed, preferably well in advance of each construction activity.

Current works include;

1. Casing and pile installation within the wind farm area (Section 3.1);
2. Guard vessel duties (Section 3.2).
3. Export Cable Landfall - Marine Works (Section 3.3).

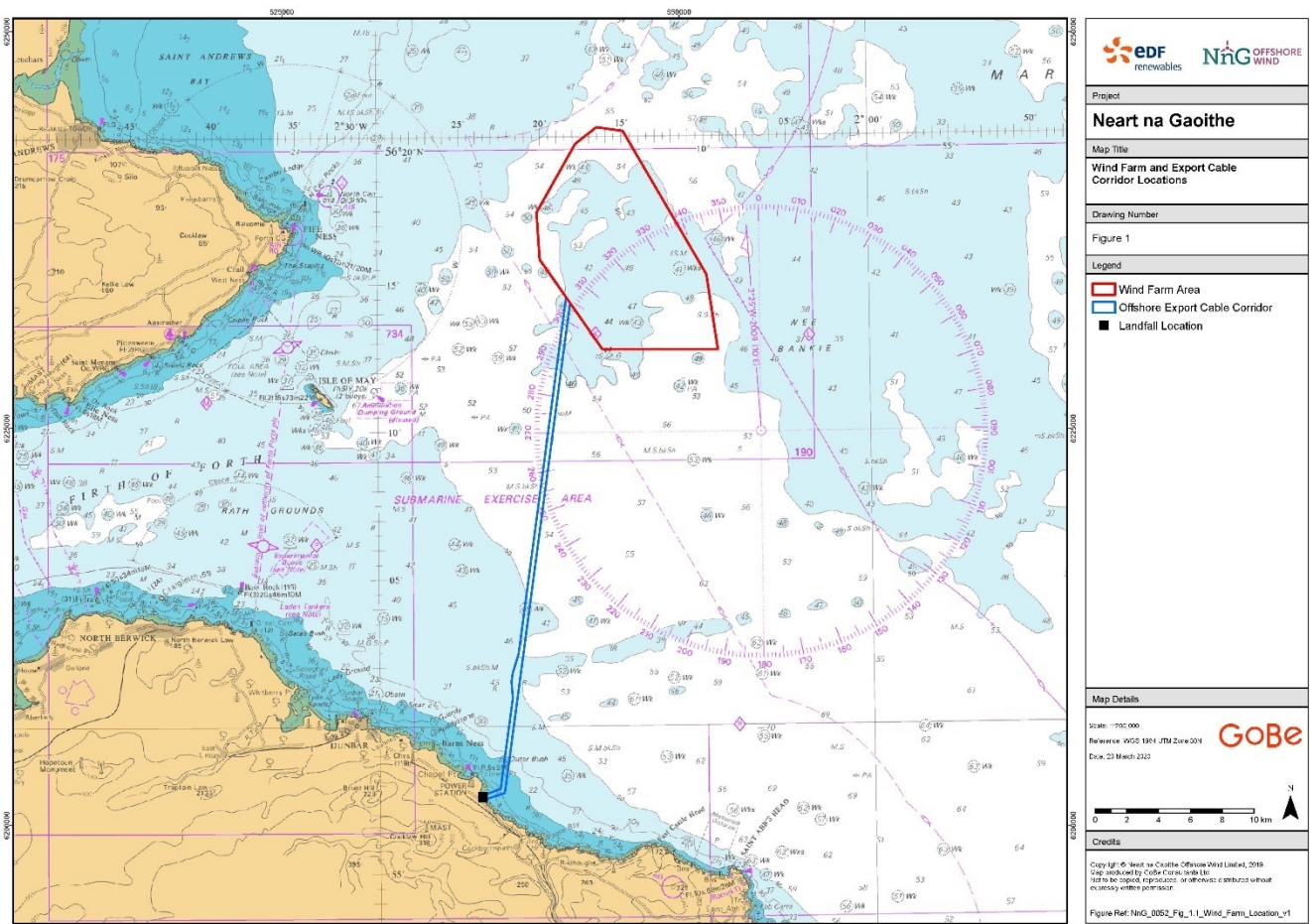


Figure 1 Neart na Gaoithe (NnG) Offshore Wind Farm area and Export Cable Corridor

## 1 Marine Coordination Contact Details

The following contact can provide more information if required. Please note that specific queries can also be addressed to the relevant vessel or shore-based representative.

*Table 1 Marine Coordination Contact Details*

Telephone number (daytime operations):	+44 (0)7508421406 / +44 (0)1890 751415
Emergency contact (24/7):	+44 (0)7508421406 / +44 (0)1890 751415
Email:	<a href="mailto:nng.mc@smchse.com">nng.mc@smchse.com</a>
Address:	NnG Offshore Wind Farm Marine Coordination Centre Gungreen Basin Eyemouth TD14 5SD

## 2 Completed Operations

### 2.1 Drilling and Casing Installation

Casing installation operations have been successfully completed at the locations listed in Table 3 below. The coordinates of each casing installed, and the casing stick-up (above seabed) can be found at: <https://nngoffshorewind.info/>

## 3 Ongoing Operations

### 3.1 Drilling and Casing Installation

*Table 2 Details of Drilling and Casing Installation Operations*

Contractor:	Saipem Ltd
Scope of operation:	Saipem Ltd has been contracted by Neart na Gaoithe (NnG) to undertake the Detailed Design under an EPCI Scope of Work. During this campaign, Saipem Ltd will drill out x3 rock-sockets and install x3 casings at each of the x54 Wind Turbine Generator (WTG) and x2 Offshore Substation (OSS) locations.
Area of operation:	OWF
Dates of operation:	10/08/20 – April 2021
Vessels supporting operation:	Saipem 7000 Sea Gull

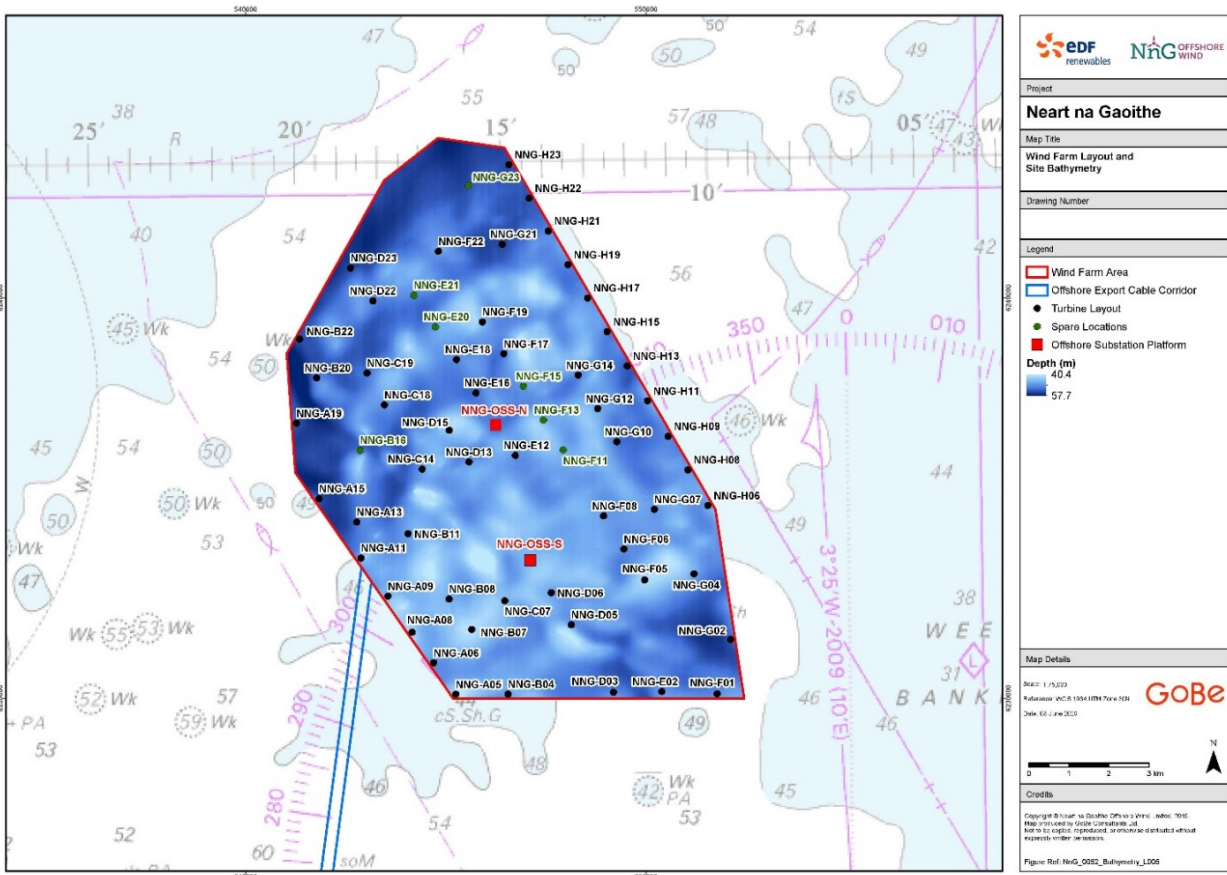


Figure 2 Location of NnG Turbine Locations within the Wind Farm Area

Table 3 Coordinates of NnG Turbine Locations and anticipated locations of work (green highlight) – complete locations are shaded (grey)

TURBINE ID	LONGITUDE (DD.MM.MMM)	LATITUDE (DD.MM.MMM)	TURBINE ID	LONGITUDE (DD.MM.MMM)	LATITUDE (DD.MM.MMM)
NNG-A13	002° 18.580' W	56° 15.153' N	NNG-F22	002° 16.536' W	56° 18.785' N
NNG-A11	002° 18.489' W	56° 14.668' N	NNG-F19	002° 15.487' W	56° 17.828' N
<b>NNG-A09</b>	<b>002° 17.845' W</b>	<b>56° 14.153' N</b>	NNG-F17	002° 14.978' W	56° 17.394' N
NNG-A08	002° 17.267' W	56° 13.665' N	NNG-F08	002° 12.603' W	56° 15.198' N
NNG-A06	002° 16.755' W	56° 13.248' N	NNG-F06	002° 12.129' W	56° 14.751' N
NNG-A05	002° 16.231' W	56° 12.822' N	NNG-F05	002° 11.632' W	56° 14.330' N
NNG-B22	002° 19.921' W	56° 17.623' N	NNG-G21	002° 14.988' W	56° 18.873' N
NNG-B20	002° 19.521' W	56° 17.097' N	NNG-G14	002° 13.181' W	56° 17.095' N
NNG-B11	002° 17.341' W	56° 14.989' N	NNG-G12	002° 12.715' W	56° 16.640' N
<b>NNG-B08</b>	<b>002° 16.365' W</b>	<b>56° 14.109' N</b>	NNG-G10	002° 12.270' W	56° 16.197' N
NNG-B07	002° 15.822' W	56° 13.695' N	NNG-G07	002° 11.379' W	56° 15.279' N
NNG-B04	002° 14.964' W	56° 12.817' N	NNG-G04	002° 10.435' W	56° 14.405' N

TURBINE ID	LONGITUDE (DD.MM.MMM)	LATITUDE (DD.MM.MMM)	TURBINE ID	LONGITUDE (DD.MM.MMM)	LATITUDE (DD.MM.MMM)
NNG-C19	002° 18.293' W	56° 17.155' N	NNG-G02	002° 09.572' W	56° 13.520' N
NNG-C18	002° 17.882' W	56° 16.725' N	NNG-H23	002° 14.806' W	56° 19.943' N
NNG-C14	002° 16.984' W	56° 15.858' N	NNG-H22	002° 14.322' W	56° 19.488' N
NNG-C07	002° 15.017' W	56° 14.076' N	NNG-H21	002° 13.865' W	56° 19.043' N
NNG-D23	002° 18.666' W	56° 18.572' N	NNG-H19	002° 13.397' W	56° 18.588' N
NNG-D22	002° 18.135' W	56° 18.127' N	NNG-H17	002° 12.932' W	56° 18.134' N
NNG-D15	002° 16.321' W	56° 16.376' N	NNG-H15	002° 12.466' W	56° 17.677' N
NNG-D13	002° 15.848' W	56° 15.946' N	NNG-H13	002° 11.997' W	56° 17.214' N
NNG-D06	002° 13.894' W	56° 14.179' N	NNG-A19	002° 20.015' W	56° 16.490' N
NNG-D05	002° 13.417' W	56° 13.744' N	NNG-A15	002° 19.484' W	56° 15.474' N
NNG-D03	002° 12.421' W	56° 12.828' N	NNG-F01	002° 09.915' W	56° 120790' N
NNG-E18	002° 16.122' W	56° 17.324' N	NNG-H11	002° 11.513' W	56° 16.740' N
NNG-E16	002° 15.658' W	56° 16.874' N	NNG-H09	002° 11.027' W	56° 16.263' N
NNG-E12	002° 14.720' W	56° 16.029' N	NNG-H08	002° 10.555' W	56° 15.808' N
<b>NNG-E02</b>	<b>002° 11.251' W</b>	<b>56° 12.829' N</b>	NNG-H06	002° 10.079' W	56° 15.324' N

Table 4 Coordinates of NnG Offshore Substation Platform (OSP) Locations and first anticipated locations of work (green highlight)

OSP ID	LONGITUDE (DD.MM.MMM)	LATITUDE (DD.MM.MMM)	OSP ID	LONGITUDE (DD.MM.MMM)	LATITUDE (DD.MM.MMM)
NNG-OSS-S	002° 14.395' W	56° 14.615' N	NNG-OSS-N	002° 15.193' W	56° 16.446' N

Table 5 Casing Installation Vessel; Saipem 7000


Vessel name:	Saipem 7000
Vessel type and Dimensions:	Heavy Lift Vessel LOA: 175.0m, Beam: 87.0m, Draught: 27.5m (Operating)
Vessel role:	Drilling and Casing Installation.
Location of operations:	NNG-E02 NNG-A09 NNG-B08

Call sign:	C6NO
Maritime Mobile Service Identity:	309461000
On board contact:	NnG Client Representative S7000-Rep@nngoffshorewind.com
Onshore representative:	Mick Hoyle Mick.hoyle@nngoffshorewind.com +44(0)7881102695



Table 6 Casing Supply Vessel; Sea Gull

Vessel name:	Sea Gull
Vessel type and Dimensions:	Platform Supply Vessel (PSV) LOA: 88.8m, Beam: 20.0m, Draught: 6.9m
Vessel role:	Transportation of casings from Marshalling Port (Leith) to S7000
Location of operations:	Leith – NnG Offshore Wind Farm as required
Call sign:	LAGK8
Maritime Mobile Service Identity:	257504000
On board contact:	NnG Client Representative S7000-Rep@nngoffshorewind.com
Onshore representative:	Mick Hoyle Mick.hoyle@nngoffshorewind.com +44(0)7881102695

Vessel name:	Sea Gull
	

### 3.2 Guard Vessels

SFF Services has been appointed by NnGOWL to provide guard vessels during the Construction of NnG Offshore Wind Farm. Apart from times of extreme weather, there will always be at least two guard vessels on site, to cover the Wind Farm Area and Export Cable Corridor. The guard vessel's primary duty is security of the construction site by informing and warning non-construction vessels of the ongoing activities and associated Safety Zones.

As of Monday 18<sup>th</sup> January 2021, NnG reduced the number of Guard Vessels operating on site from two, to one. NnG will assess the offshore construction activities planned and will increase the number of Guard Vessels when deemed necessary.

*Table 7 Guard Vessel; Artemis*

Vessel name:	Artemis
Vessel type and Dimensions:	Guard Vessel LOA: 27.69m, Beam: 8.7m, Draught: 5.1m
Vessel role:	Guard Vessel Duties
Location of operations:	Return to Offshore Wind Farm on 01/03/2021
Call sign:	MVIX5
Maritime Mobile Service Identity:	233975000
On board contact:	Vessel Master concordeb47@aol.com
Onshore representative:	Martin Malone Martin.malone@nngoffshorewind.com +44(0)7880439480

Vessel name:	Artemis
	

Table 8 Guard Vessel; Tranquillity S


Vessel name:	Tranquillity S
Vessel type and Dimensions:	Guard Vessel LOA: 19.0m, Beam: 7.0m, Draught: 2.63m
Vessel role:	Guard Vessel Duties
Location of operations:	Offshore Wind Farm until 01/03/2021
Call sign:	MJUH9
Maritime Mobile Service Identity:	235053837
On board contact:	Vessel Master spousekeil@yahoo.com
Onshore representative:	Martin Malone Martin.malone@nngoffshorewind.com +44(0)7880439480
	

Table 9 Guard Vessel; WaveDancer II

Vessel name:	WaveDancer II
Vessel type and Dimensions:	Guard Vessel

	LOA: 11.0m, Beam: 4.0m, Draught: 1.0m
Vessel role:	Guard Vessel Duties
Location of operations:	Nearshore Area from 01/02/2021 until estimated April
Call sign:	MPBU3
Maritime Mobile Service Identity:	235020574
On board contact:	Vessel Master Gary@divestay.co.uk +44 (0) 7966 052614
Onshore representative:	Martin Malone Martin.malone@nngoffshorewind.com +44 (0) 7880439480



**3.3 Export Cable Landfall - Marine Works**

NnGOWL have recommenced the remaining HDD supporting works within the nearshore extent of the Export Cable Corridor. Operations are based on 12-hour daytime working, transiting to and from site each day from Eyemouth. A nearshore exclusion zone has been reintroduced for the works (Figure 3), with coordinates provided in Table 10. The exclusion is in place from 1<sup>st</sup> February 2021.

A team of divers supported by two vessels, the Teal of Wick (ZQXM9) and Shuna (VQBP3), are undertaking supporting marine works at the two HDD punch out locations, including; seabed preparation of the exit pits of, as well as visual inspection and capping of the duct pipes.

In order to facilitate the team of divers, whilst on site, the Teal of Wick is stabilised on a mooring spread, marked by buoys. The first HDD exit pit is also be marked temporarily by a separate marker buoy. The as-laid position of the marker buoys are provided in Table 11. All marker buoys will be removed by the Isle of Jura following the completion of the works, anticipated to be in mid-March 2021.

Ducting has been installed at HDD1, the position and stick-up above seabed is provided in Table 12. Once the ducting has been installed in the second HDD, expected to be on 23<sup>rd</sup> February 2021, the seabed location and stick-up above seabed will be provided below.

**All vessels are requested to remain at least 500 metres away from the work vessels and static fishing gear is requested to be removed from the exclusion area.**



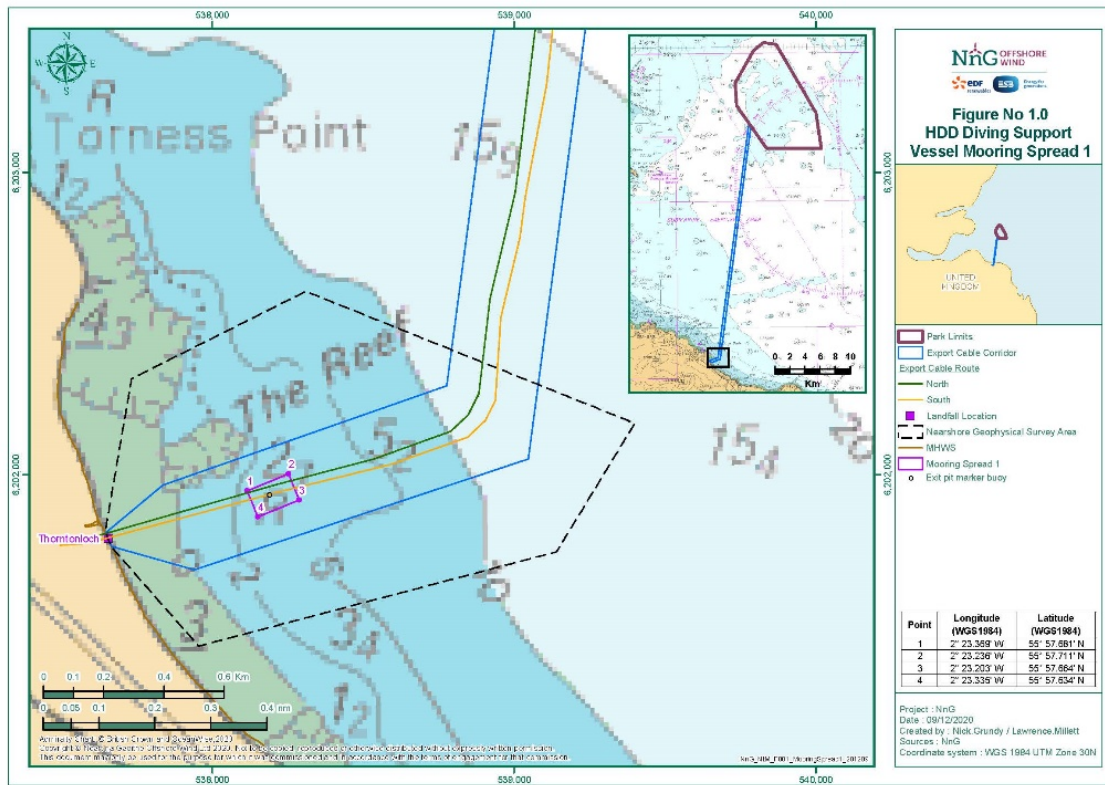


Figure 3 – Teal of Wick Mooring Point Coordinates & HDD Exit Pit

Table 10 - Nearshore Exclusion Zone Coordinates

Polygon Point	Longitude (DDM)	Latitude (DDM)
1	002° 22.132' W	55° 57.796' N
2	002° 22.385' W	55° 57.568' N
3	002° 23.527' W	55° 57.405' N
4	002° 23.802' W	55° 57.583' N
5	002° 23.822' W	55° 57.610' N
6	002° 23.733' W	55° 57.883' N
7	002° 23.176' W	55° 58.036' N

Table 11 - Teal of Wick Mooring Point Coordinates & HDD Exit Pit

Mooring Point	Longitude (DDM)	Latitude (DDM)
1 - NW Mooring	002° 23.369' W	55° 57.681' N
2 - NE Mooring	002° 23.236' W	55° 57.710' N
3 - SE Mooring	002° 23.202' W	55° 57.656' N
4 - SW Mooring	002° 23.306' W	55° 57.626' N
Exit Pit Marker buoy HDD 1	002° 23.296' W	55° 57.676' N

Table 12 - HDD Ducting Stick up and location

Mooring Point	Longitude (DDM)	Latitude (DDM)	Stick-up
HDD 1	002° 23.296' W	55° 57.676' N	Approx. 1.5m

Table 13 Dive Vessel; Teal of Wick


Vessel name:	Teal of Wick
Vessel type and Dimensions:	Dive Vessel LOA: 18.25m, Beam: 8.0m, Draught: 1.85m
Vessel role:	Dive works to support HDD activities
Location of operations:	Nearshore extent of Export Cable Corridor
Call sign:	ZQXM9
Maritime Mobile Service Identity:	235000773
On board contact:	David Wood <a href="mailto:david.wood@caldive.co.uk">david.wood@caldive.co.uk</a>
Onshore representative:	Martin Malone Martin.malone@nngoffshorewind.com +44(0)7880439480
	

Table 14 Tug Support Vessel; Shuna

Vessel name:	Shuna
Vessel type and Dimensions:	Tug Support Vessel LOA: 17.0m, Beam: 6.0m, Draught: 2.20m
Vessel role:	Dive works to support HDD activities
Location of operations:	Nearshore extent of Export Cable Corridor
Call sign:	VQBP3
Maritime Mobile Service Identity:	235007528
On board contact:	David Wood



Vessel name:	Shuna
	<a href="mailto:david.wood@caldive.co.uk">david.wood@caldive.co.uk</a>
Onshore representative:	Martin Malone Martin.malone@nngoffshorewind.com +44(0)7880439480
	

Table 15 Isle of Jura Vessel Details

Vessel name:	Isle of Jura
Vessel type and Dimensions:	Utility Vessel LOA: 33.0m, Beam: 15.0m, Draught: 2.50m
Vessel role:	Placement and recovery of mooring spread
Call sign:	MFFY6
Maritime Mobile Service Identity:	232021966
On board contact:	Contact Email: <a href="mailto:admin@seafastltd.co.uk">admin@seafastltd.co.uk</a>
Onshore representative:	Contact name: David Wood Email: <a href="mailto:david.wood@caldive.co.uk">david.wood@caldive.co.uk</a>
	

#### 4 Planned Operations

NnGOWL will update this section of the report prior to any additional offshore operations commencing.

## 5 General Safety Advice

All vessels engaged in the construction activity will exhibit appropriate lights and shapes prescribed by the International Regulations for Preventing Collisions at Sea; relative to their operations. All vessels engaged in the activity will also transmit an Automatic Identification System (AIS) message. Mariners are requested to navigate with caution and keep continued watch on VHF Ch. 16, when navigating the area.

Please be aware that by virtue of their mode of operation and the equipment deployed vessels will be Restricted in their Ability to Manoeuvre (RAM) as defined under COLREGs (International Regulations for Preventing Collisions at Sea 1972, Rule 3). Masters of vessels are therefore requested to maintain their vessels and gears at a minimum safe distance from these vessels of 500 metres when it is undertaking its work and showing the appropriate shapes and lights in accordance with COLREGs Rule 18.

Use of Safety Zones within the Neart na Gaoithe Offshore Wind Farm Construction Area is as follows:

- Mandatory "rolling" 500 metres (m) Safety Zones will be established around each wind farm structure (turbines and Offshore Substation Platforms (OSP)) and/or their foundations whilst construction works are in progress, as indicated by the presence of a construction vessel. Up to ten of these Safety Zones may be active at any given time.

The duty Guard Vessels and Marine Coordination Centre will be responsible for monitoring and policing the Safety Zones; and can be contacted directly for advice. Users are advised to keep clear of construction activities, including Safety Zones.

## 6 Fisheries Liaison

Fisheries liaison associated with the activity will be co-ordinated by the Company Fisheries Liaison Officer. For any commercial fishery queries please contact: Peter Berney, telephone: +44 (0)7391 402387 or email: [NnG.FLO@naturalpower.com](mailto:NnG.FLO@naturalpower.com). For any other general queries please contact [info@nngoffshorewind.com](mailto:info@nngoffshorewind.com).