

| | |
|----------------|---|
| Date of issue: | 19/01/2021 |
| Subject: | Neart na Gaoithe Offshore Wind Farm: Recommencing HDD Supporting Works |
| NtM number: | 132 |
| Revision: | 1 |
| Author: | Calum Billings, NnGOWL Offshore Consents Support (Calum.Billings@nngoffshorewind.com) |

Mariners are advised that Neart na Gaoithe Offshore Wind Farm Limited (NnGOWL) are due to recommence the remaining HDD supporting works within the nearshore extent of the Export Cable Corridor. The works are due to recommence on the 1st February 2021 at the earliest.

A team of divers supported by two vessels, the *Teal of Wick* (ZQXM9) and *Shuna* (VQBP3), will recommence supporting marine works for the Phase 1 HDD works which were suspended on the 19th December 2020 (NtM 130) including; seabed preparation of two small sub-tidal exit pits of up to 10m² (one for each drill hole to emerge from), as well as visual inspection and capping of the duct pipe. Once completed, the works will be repeated for the second drill (Phase 2 HDD works).

In order to facilitate the team of divers, the *Teal of Wick* will be stabilised on a mooring spread, marked by buoys. Both exit pits will also be marked temporarily by two separate marker buoys. The as-laid position of the marker buoys for Phase 1 are provided in Table 2. Once Phase 1 is complete, the mooring spread will be relocated to the exit pit for the second HDD. The mooring spread and temporary marker buoy as laid positions will be provided once confirmed. All marker buoys will be removed by the *Isle of Jura* following the completion of the works, anticipated to be in mid-March 2021.

Area of Operations

Mariners are advised that both the *Teal of Wick* and *Shuna* will be mobilised from Eyemouth to work within the nearshore area of the Neart na Gaoithe (NnG) Export Cable Corridor, shown in Figure 1. A nearshore exclusion zone has been reintroduced for the works, with coordinates provided in Table 1. The exclusion will be in place from 1st February 2021.

All vessels are requested to remain at least 500 metres away from the work vessels and static fishing gear is requested to be removed from the exclusion area.

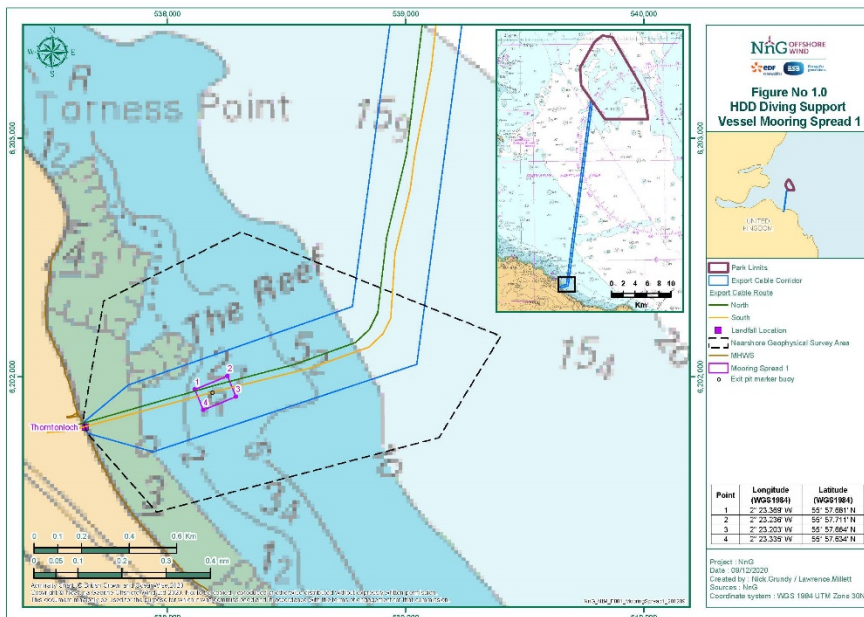


Figure 1 – Teal of Wick Mooring Point Coordinates & HDD Exit Pit

Table 1 - Nearshore Exclusion Zone Coordinates

| Polygon Point | Longitude (DDM) | Latitude (DDM) |
|---------------|-----------------|----------------|
| 1 | 002° 22.132' W | 55° 57.796' N |
| 2 | 002° 22.385' W | 55° 57.568' N |
| 3 | 002° 23.527' W | 55° 57.405' N |
| 4 | 002° 23.802' W | 55° 57.583' N |
| 5 | 002° 23.822' W | 55° 57.610' N |
| 6 | 002° 23.733' W | 55° 57.883' N |
| 7 | 002° 23.176' W | 55° 58.036' N |

Table 2 - Teal of Wick Mooring Point Coordinates & HDD Exit Pit

| Mooring Point | Longitude (DDM) | Latitude (DDM) |
|----------------------|-----------------|----------------|
| 1 - NW Mooring | 002° 23.369' W | 55° 57.681' N |
| 2 - NE Mooring | 002° 23.236' W | 55° 57.710' N |
| 3 - SE Mooring | 002° 23.202' W | 55° 57.656' N |
| 4 - SW Mooring | 002° 23.306' W | 55° 57.626' N |
| Exit Pit Marker buoy | 002° 23.296' W | 55° 57.676' N |

Schedule

The Phase 1 HDD supporting marine works are due to recommence on the 1st February 2021 at the earliest (weather dependent). The Phase 2 HDD supporting marine works will commence immediately upon completion of the Phase 1 works and is expected to be completed by 15th March 2021, weather dependent.

Weather permitting and during daylight hours, construction works will be carried out on a continuous basis (i.e. 12-hour working, seven days a week, unless notified otherwise).

For updates on the progress of the works, information will be provided in the Weekly Notice of Operations available on the NnG project website: <https://nngoffshorewind.com/downloads/>.

Vessels Associated with the Activity

Please be aware that by virtue of its mode of operation and the equipment deployed, the *Teal of Wick* and *Shuna* will at times be Restricted in their Ability to Manoeuvre as defined under COLREGS (International Regulations for Preventing Collisions at Sea 1972, Rule 3). Masters of vessels are therefore requested to maintain their vessels and gears at a minimum safe distance from these vessels of 500 metres when they are undertaking it work and showing the appropriate shapes and lights.

Table 3 – Teal of Wick Vessel Details

| | |
|-----------------------------------|-----------------------|
| Vessel name: | Teal of Wick |
| Vessel role: | Diving Support Vessel |
| Call sign: | ZQXM9 |
| Maritime Mobile Service Identity: | 235000773 |


| | |
|--|---|
| On board contact: | Contact Email: admin@seafastltd.co.uk |
| Onshore representative: | Contact name: David Wood Email: david.wood@caldive.co.uk |
|  | |

Table 4 – Shuna Vessel Details


| | |
|--|---|
| Vessel name: | Shuna |
| Vessel role: | Tug Support Vessel |
| Call sign: | VQBP3 |
| Maritime Mobile Service Identity: | 235007528 |
| On board contact: | Contact Email: admin@seafastltd.co.uk |
| Onshore representative: | Contact name: David Wood Email: david.wood@caldive.co.uk |
|  | |

Table 5 - Isle of Jura Vessel Details

| | |
|-----------------------------------|---|
| Vessel name: | Isle of Jura |
| Vessel role: | HDD Supporting Marine Works |
| Call sign: | MFFY6 |
| Maritime Mobile Service Identity: | 232021966 |
| On board contact: | Contact Email: admin@seafastltd.co.uk |
| Onshore representative: | Contact name: David Wood Email: david.wood@caldive.co.uk |



Port of Operation

The *Teal of Wick* and *Shuna* will mobilise from Eyemouth, UK. The vessels will return to Eyemouth daily after completing operations during daylight hours. When required, the *Isle of Jura* will mobilise from Burntisland to recover and re-deploy the mooring spread between the phases of work.

Adverse weather conditions

Upon adverse weather conditions, if the *Teal of Wick* and *Shuna* are not able to hold on position, they will both return to Eyemouth.

General Safety Advice

Construction activities are ongoing within the boundaries of the Neart na Gaoithe Offshore Wind Farm. Mariners are advised to refer to the NnG Weekly Notice of Operations where up to date information regarding activities on site is broadcast. A copy of this notice and the Weekly Notice of Operations can also be found at <https://nngoffshorewind.com/downloads/>.

Marine Coordination Contact Details

The following contact can provide more information if required. Please note that specific queries can also be addressed to the relevant vessel or shore based representative.

Table 6 - Marine Coordination Contact Details

| | |
|-----------------------------|--|
| Telephone number (daytime): | +44 (0) 1890 751415 (use Emergency contact only until further notice) |
| Emergency contact (24/7): | +44 (0) 7508 421406 |
| Email: | nng.mc@smchse.com |
| Address: | NnG Offshore Wind Farm Marine Coordination Centre, Gunsgreen Basin, Eyemouth, TD14 5SD |

Fisheries Liaison

Fisheries liaison associated with the activity will be co-ordinated by Natural Power. For any commercial fishery queries please contact the NnG company Fisheries Liaison Officer (CFLO) Peter Berney, telephone: +44 (0)7391 402387 or email: NnG.FLO@naturalpower.com. An Offshore Fisheries Liaison Officer (OFLO) will be present on the *Shuna* and can be contacted via VHF Channel 16.

Distribution List

A central list of recipients is maintained by the company Fisheries Liaison Officer; if you are not the appropriate recipient of these notices, or do not wish to receive the notices in the future, please contact us at NnG.FLO@naturalpower.com. A copy of this notice can also be found at <https://nngoffshorewind.com/>