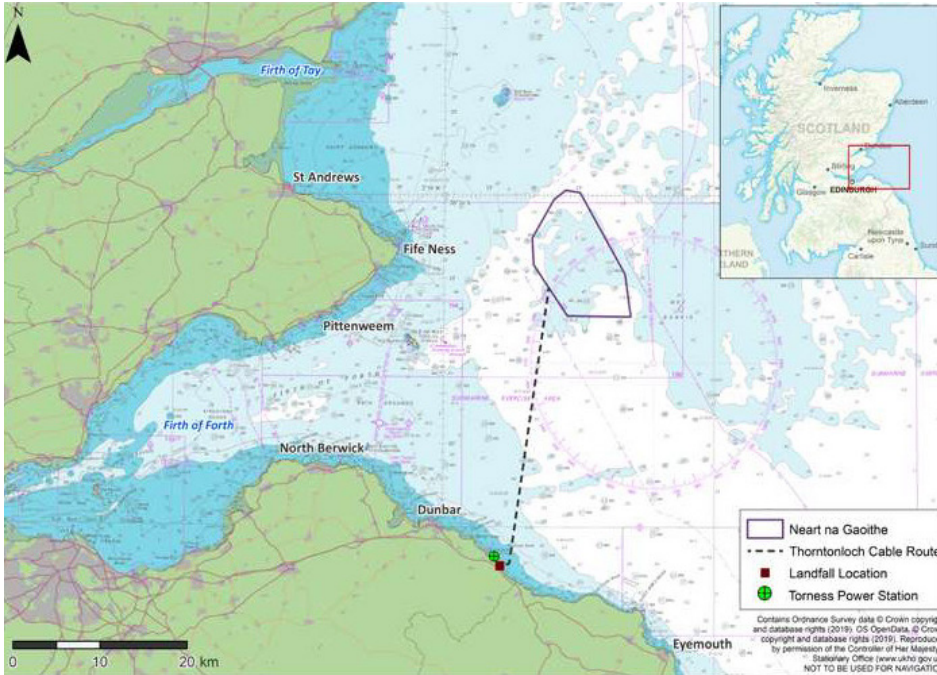


About Neart na Gaoithe



Welcome to our consultation event on the proposed new pontoon at Eyemouth Harbour. The pontoon will be located at our proposed site which will be used for Operations and Maintenance (O&M) purposes as part of the EDF Renewables and ESB, Neart na Gaoithe Offshore Wind Farm (NnG).

The NnG Offshore Wind Farm is proposing to build a base in Eyemouth on land owned by Eyemouth Harbour Trust, near the entrance to the harbour, to support the operations and maintenance of the wind farm.

*Based upon the average domestic electricity consumption per home of 3,889 kWh per the Energy Consumption in the UK (published July 2017) and Renewable-UK offshore wind average load factor at 37.2%



EDF Renewables has an operational portfolio of 36 wind farms in the UK as well as one of the UKs largest battery storage sites.

EDF Renewables has more than 2 GW of projects in construction, planning and development. EDF Renewables operates the Teesside and Blyth offshore wind farms.

The wind farm will be located in the outer Firth of Forth, approx. 15.5 kilometers (km) from Fife Ness and 28km from Dunbar in East Lothian. EDF Renewables acquired NnG in 2018 and the site was awarded to the previous owners (*Mainstream Renewable Power) in 2009.

Neart na Gaoithe means "strength of the wind" and the wind farm will generate up to the 450 megawatts (MW) of renewable electricity, enough power more than 375,000 homes. * It will offset over 400,000 tonnes of CO₂ emissions each year.

In December 2019 a 50% share in the NnG project was acquired by ESB - a leading Irish energy utility company with over 1.4 million customers.

ESB operates across the electricity market in Ireland from generation through transmission and distribution, to the supply of customers with an expanding presence across the UK.



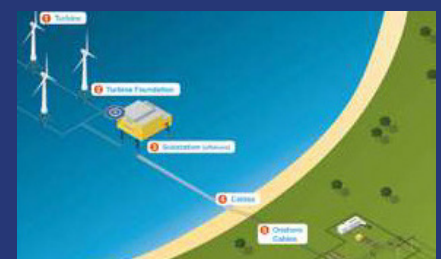
NnG Facts

The main components of the wind farm are as follows:

- ◆ 54 wind turbines
- ◆ 2 electrical offshore substations
- ◆ 56 three-legged steel "jacket" foundations, supporting the turbines and offshore substations
- ◆ Aray cables within the wind farm connecting the turbines to the substation
- ◆ Export cables between the offshore substations and landfall at Thorntonloch (east Lothian)
- ◆ Onshore cables between Thorntonloch and the grid connection point at Crystal Rig onshore wind farm in the Lammermuir Hills

Offshore construction in summer 2020 with turbines becoming operational in 2022.

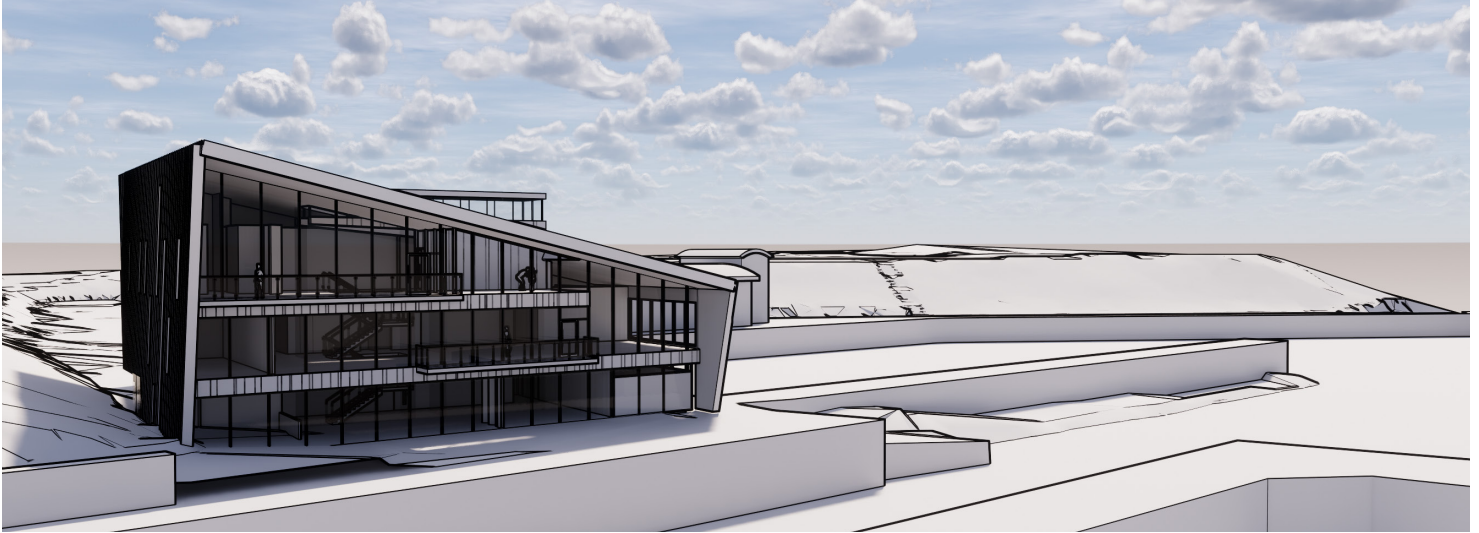
The offshore Wind Farm & Onshore Grid Connection



EYEMOUTH HARBOUR TRUST
SCOTLAND'S FIRST PORT OF CALL

For more information about NnG check out our website: www.edf-re.uk or follow us at:  [EDFRenewablesUK](https://www.linkedin.com/company/edf-renewables-uk)

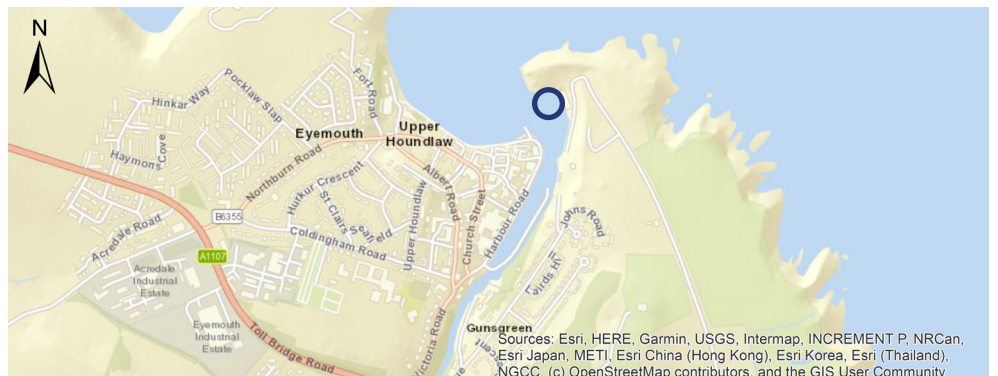
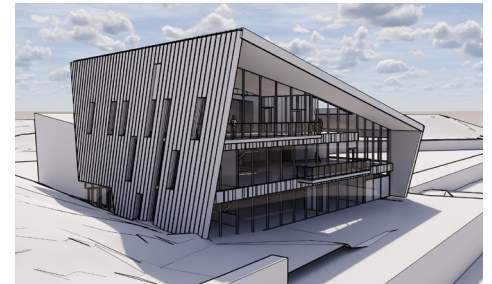
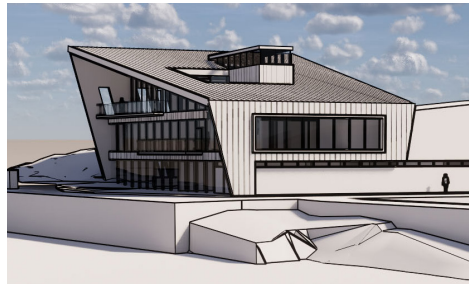
Operations and Maintenance Base - Background



When the Neart na Gaoithe offshore wind farm is fully operational the turbines will generate electricity which will supply the national grid. Like any power station there will be a need to carry out maintenance to keep the wind farm operating efficiently, this work will be managed from a brand new Operations and Maintenance (O&M) base. The proposed O&M base will be in Eyemouth on land owned by Eyemouth Harbour Trust, near the entrance to the harbour.

The base will comprise of an O&M building and a pontoon, both of which will be used all year round on both weekdays and weekends, with increased activity over the summer months due to favourable weather conditions.

The O&M building onshore is undergoing a separate planning application; the purpose of this pre-application consultation is to provide information on the construction and design of the pontoon for which a Marine Licence Application is being sought.



Neart na Gaoithe (NnG) operations and Maintenance (O&M) base located at Smeaton's Quay, Gunsreen Basin.

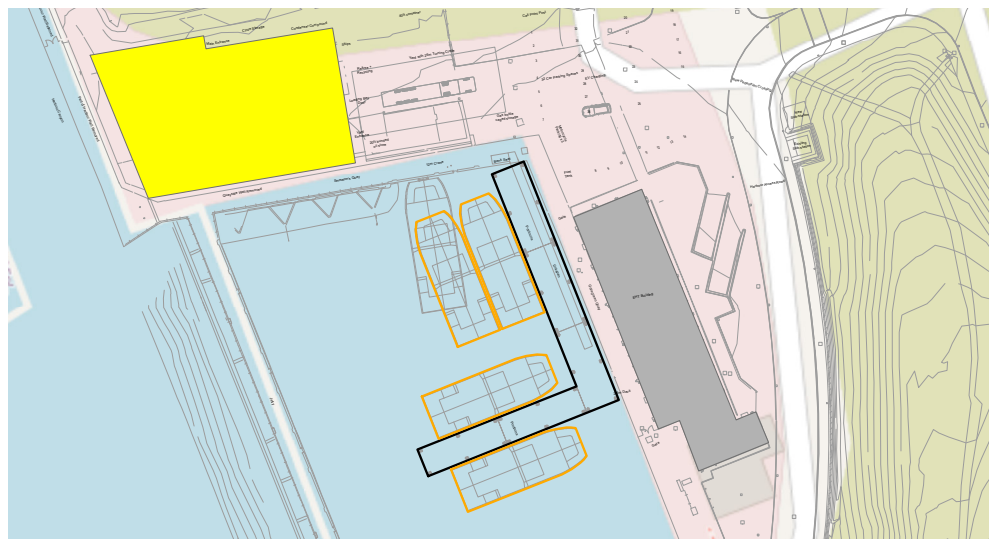
Pontoon - Marine Licence Application



Maintenance on the turbines is carried out during periods of good weather and Crew Vessel Transfer (CVT) boats are used to carry technicians, tools and spare parts out to the wind farm. By using a local harbour the journey time to the wind farm is minimised. Eyemouth Harbour is close to the vessel berths which helps the boats to be loaded quickly and also allows for safe access of maintenance teams.



The maintenance operations carried out are varied, including safety inspections, servicing of equipment located within the turbine, inspections of the blades, foundations and electrical cables as well as repairs and engineering improvements. It is anticipated that a floating pontoon will be constructed to ensure CVTs can be safely accessed at all states of the tide, to minimise the risk of falling.



The pontoon will be approximately 70 m long and design is currently ongoing; however, the layout may be similar to as shown here. It will be positioned against and attached to the quayside and will provide a berthing area for a minimum of three CVTs.

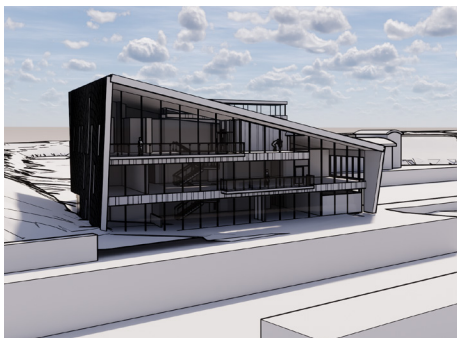
Marine Licence Application Process



A marine licence application will be submitted to Marine Scotland Licensing Operations Team in respect to the marine elements of the O&M proposal (i.e. the pontoon).

The marine licence application will include a description of the proposed pontoon design accompanied by a full set of drawings. It will also include an environmental report assessing the environmental considerations of the pontoon on the marine environment.

A decision on the marine licence application is expected in January 2021.



We welcome any feedback on the proposal presented. Feedback can be provided via email to info@nngoffshorewind.com by 8th October.

Please note that feedback provided at this stage is not a formal representation on the planning application, but will be taken into account in the finalising of the proposal.

An online pre-application consultation event will be held on Thursday 1st October 2020. There will be two sessions held on the day: 1pm-2pm and 7pm-8pm.

To register for the online event please visit <https://nngoffshorewind.com/downloads> before 24th September.