

Welcome to our consultation event on the proposed new building at Eyemouth Harbour. This new site will be used for Operations and Maintenance (O&M) purposes as part of the EDF Renewables and ESB, Neart na Gaoithe Offshore Wind Farm (NnG.)

The NnG Offshore Wind Farm is proposing to build a base in Eyemouth on land owned by Eyemouth Harbour Trust, near the entrance to the harbour, to support the operations and maintenance of the wind farm.

*Based upon the average domestic electricity consumption per home of 3,889 kWh per the Energy Consumption in the UK (published July 2017) and Renewable-UK offshore wind average load factor at 37.2%



EDF Renewables has an operational portfolio of 36 wind farms in the UK as well as one of the UK's largest battery storage sites.

EDF Renewables has more than 2 GW of projects in construction, planning and development. EDF Renewables operates the Teesside and the Blyth offshore wind farms.

The wind farm will be located in the outer Firth of Forth, approx. 15.5 kilometres (km) from Fife Ness and 28km from Dunbar in East Lothian. EDF Renewables acquired NnG in 2018 and the site was awarded to the previous owners (Mainstream Renewable Power) in 2009.

Neart na Gaoithe means 'strength of the wind' and the wind farm will generate up to 450 megawatts (MW) of renewable electricity, enough to power more than 375,000 homes.* It will offset over 400,000 tonnes of CO₂ emissions each year.

In December 2019 a 50% share in the NnG project was acquired by ESB – a leading Irish energy utility company with over 1.4 million customers.

ESB operates across the electricity market in Ireland from generation, through transmission and distribution, to the supply of customers with an expanding presence across the UK.

NnG Facts

The main components of the wind farm are as follows:

- ♦ 54 wind turbines
- ♦ 2 electrical offshore substations
- ♦ 56 three-legged steel 'jacket' foundations, supporting the turbines and offshore substations
- ♦ Array cables within the wind farm connecting the turbines to the substations
- ♦ Export cables between the offshore substations and the landfall at Thorntonloch (East Lothian)
- ♦ Onshore cables between Thorntonloch and the grid connection point at Crystal Rig onshore wind farm in the Lammermuir Hills

Offshore construction will begin in summer 2020 with turbines becoming operational in 2022.

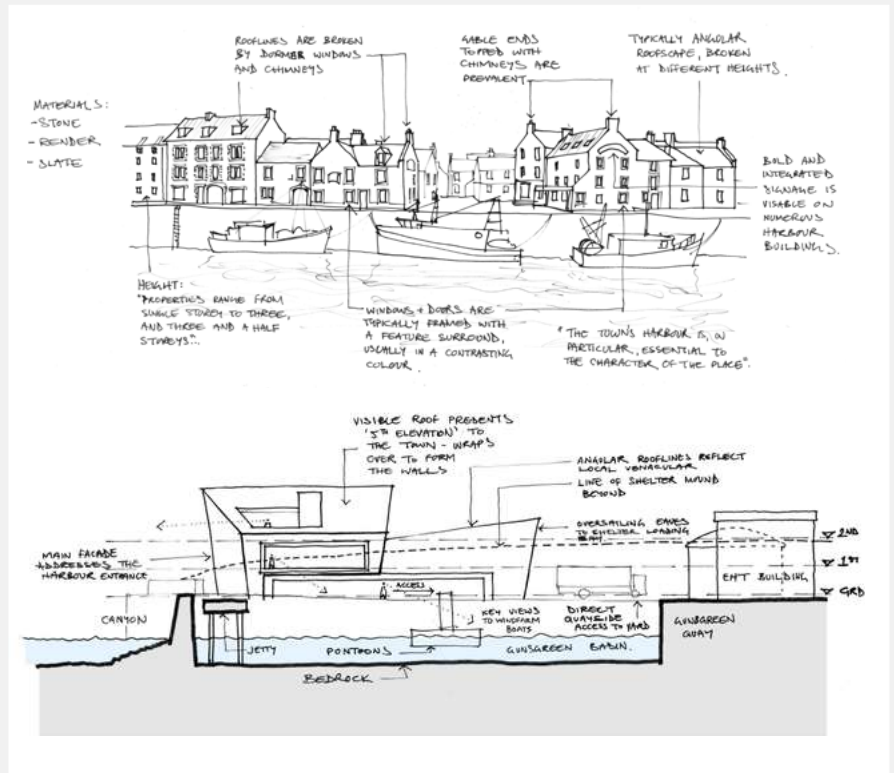
The Offshore Wind Farm and Onshore Grid Connection



The proposed Operations and Maintenance (O&M) base of the windfarm will be in Eyemouth on land owned by Eyemouth Harbour Trust, near the entrance to the harbour.

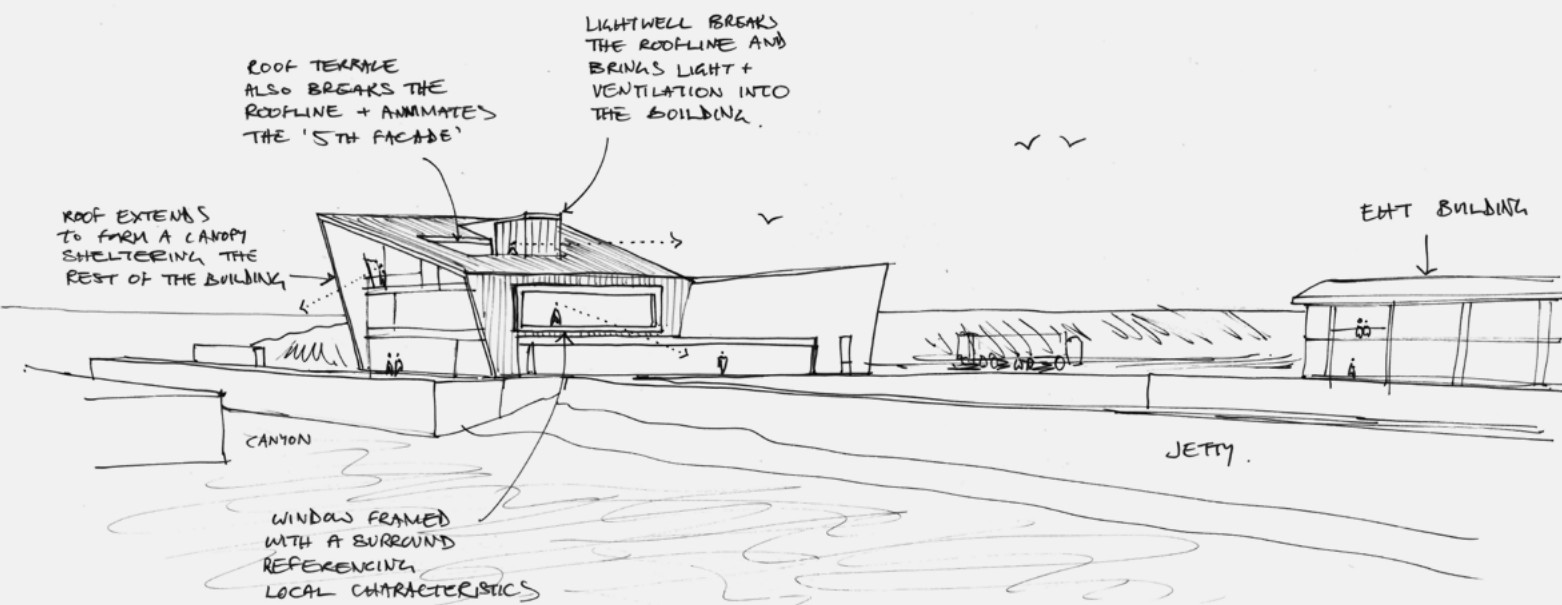
Architects with experience of working in conservation areas have been appointed to develop the design and have researched the history of Eyemouth, looking carefully at existing buildings.

The wind farm base will mark a new and exciting chapter in the history of the town and the project is keen to create a well designed building that reflects this.

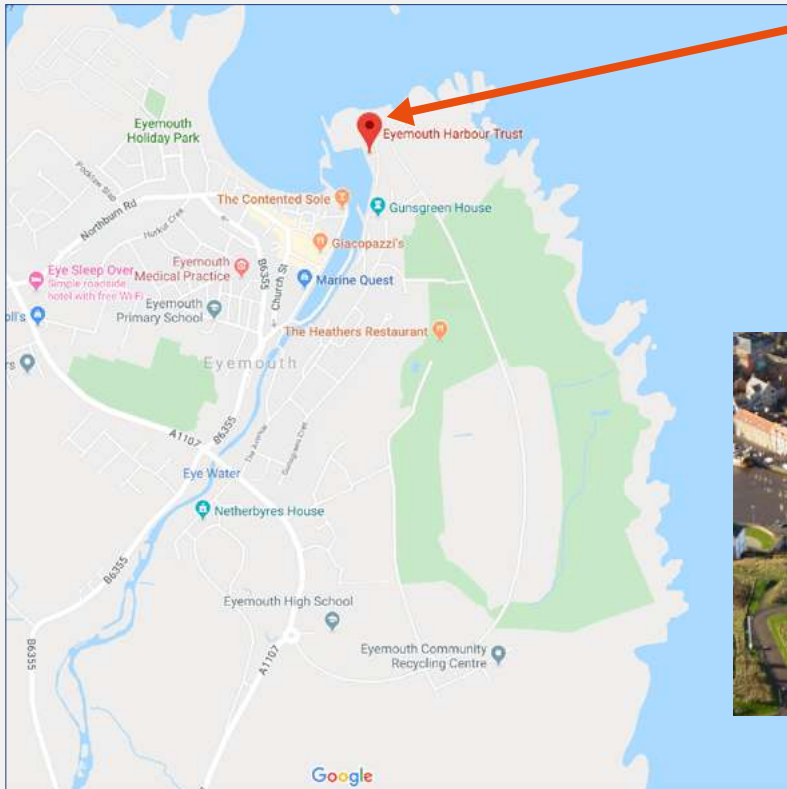


The O&M base would include office space, welfare facilities, meeting rooms, warehouse storage and a marine control centre. There would be a yard with a small crane to facilitate deliveries and the loading or unloading of the boats that will carry maintenance workers to the wind farm.

The location and the design of the building will allow those inside to have great views of the harbour and the sea. The interesting shapes and angles of the building borrow from the existing skyline in the old harbour and the wrap-around-roof provides a 5th elevation when viewed from the higher elevations around Gunsgreen.



The building is designed with sustainability at its core and will include solar panels, electric car and bike charging, plus natural lighting and cooling.

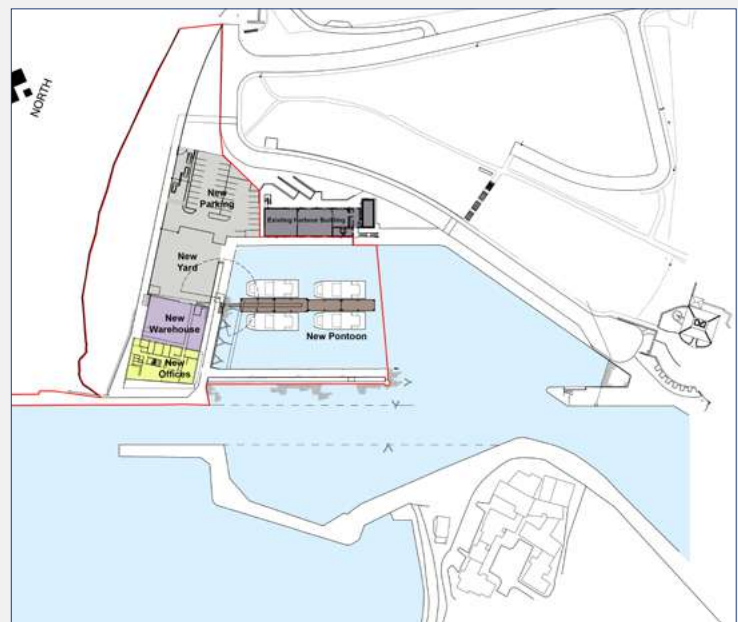


Neart na Gaoithe (NnG) Operations and Maintenance (O&M) base located at Smeaton's Quay, Gunsgreen Basin.

The proposed land area is adjacent to the coast with no buildings between the base and the sea.



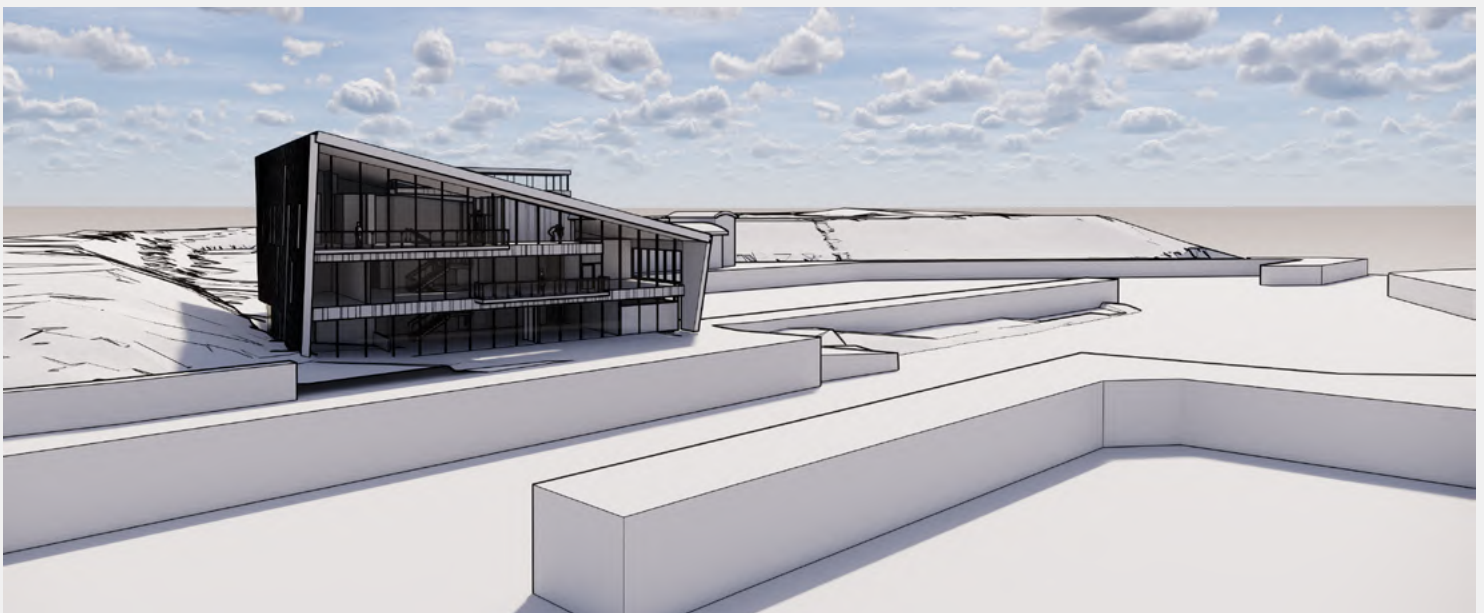
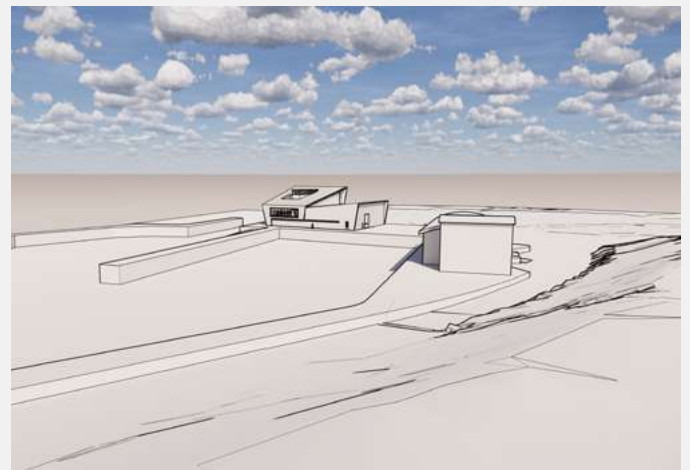
The proposed building location, currently used for storing fishing equipment, will be relocated nearby.

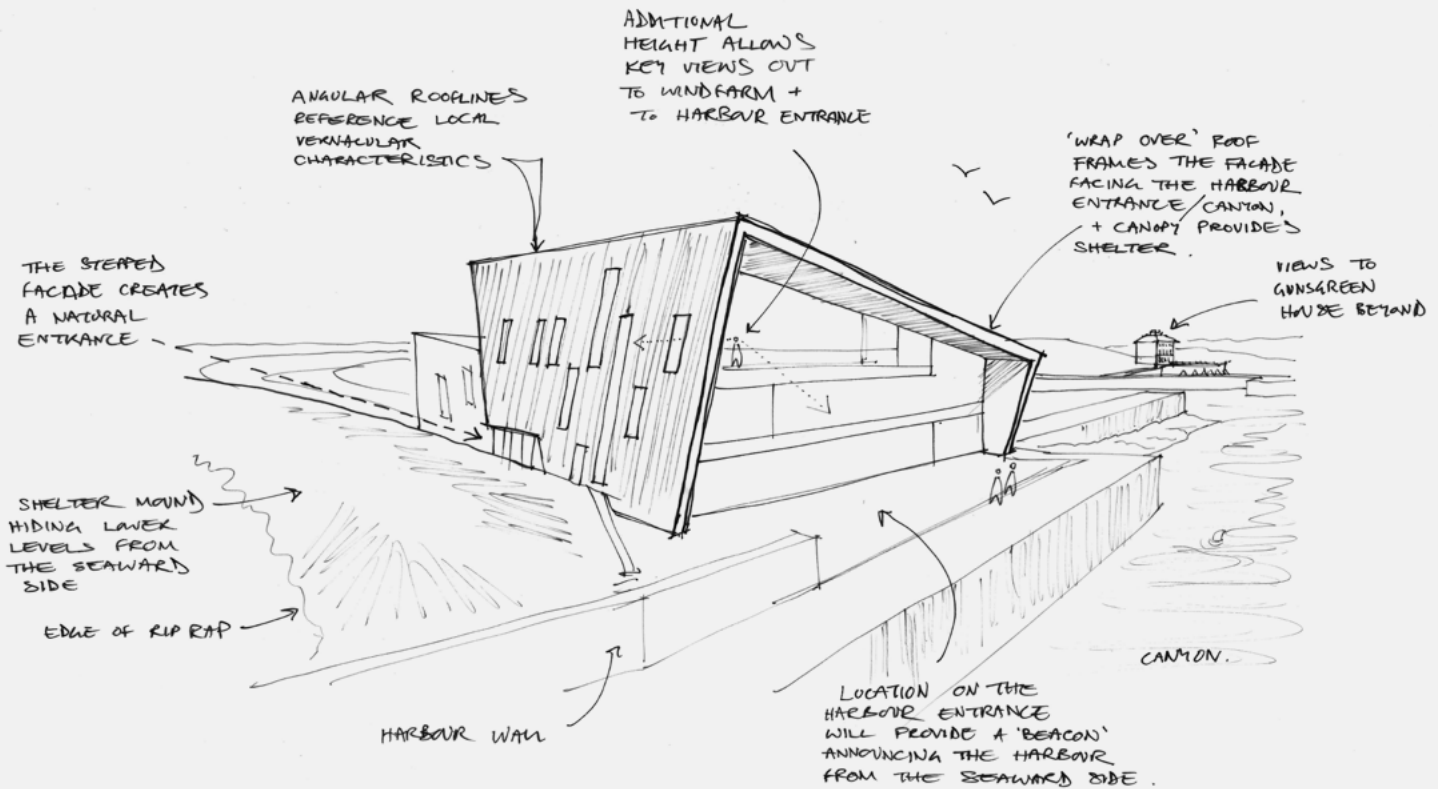


Alongside the new building will be a yard, parking facilities and a new pontoon for boats servicing the wind farm.

Design values which respond to the site and underlying character of the area

- ♦ High design quality appropriate to conservation area
- ♦ Clear identity rooted in the essence of place rather than following the architectural style of neighbouring buildings
- ♦ Simple, elegant, well designed and proportioned building that fulfils its purpose
- ♦ Composition with clear hierarchies and a scale appropriate to the surroundings – operation use of the building and spaces vital to developing the form
- ♦ Building responds to key views
- ♦ Simple variety of high quality materials





When the Neart na Gaoithe offshore wind farm is fully operational the turbines will generate electricity which will supply the national grid. Like any power station there will be a need to carry out maintenance to keep the wind farm operating efficiently, this work will be managed from a brand new Operations and Maintenance (O&M) base. The O&M base will create jobs and opportunities for local businesses to support what we do at the wind farm

Within the planned O&M base there will be a local control room which will oversee activities whenever teams are working offshore. This includes coordinating vessel movement, health & safety and operation of the windfarm. This usually takes place between 6am and 7pm each day.



There are also changing rooms and welfare facilities for the offshore workers with offices for the planning team and several meeting rooms. The tools, equipment and spare parts that will be used to carry out maintenance are stored in a warehouse attached to the operations building.

The activities that our team will carry out are varied and include safety inspections, servicing of equipment located within the turbine, inspections of the blades, foundations and electrical cables as well as repairs and engineering improvements.



Specialist catamarans called Crew Transfer Vessels will be used to access the turbines. These boats will be berthed at Eyemouth Harbour as it is close to the wind farm where workers will travel out to daily. Eyemouth Harbour has been selected as the preferred location because it is one of the closest harbours to the wind farm and offers access all year round.

Maintenance on the turbines is carried out during periods of good weather and the boats are used to carry technicians, tools and spare parts out to the wind farm. By using a local harbour the journey time to the wind farm is minimised. Eyemouth Harbour is close to the vessel berths which helps the boats to be loaded quickly and also allows for safe access of maintenance teams.





The project team has been working with Scottish Borders Council planning officers, building on work started by Eyemouth Harbour Trust in early 2019.

A planning application will shortly be submitted to Scottish Borders Council in respect of the landside elements of the Operations and Maintenance (O&M) proposal. Marine elements (i.e. the pontoons) will be the subject of a separate Marine Licensing process via Marine Scotland.

The planning application will include comprehensive analysis of the design approach and justification of the proposed design in the context of the conservation area. The planning application will also include a full set of drawings and reports addressing relevant transport and environmental considerations.

A decision on the planning application is expected by the end of March 2020.

Have your say

We welcome any feedback on the proposals presented today. Feedback can be provided by completing the postcards which are available throughout the venue.

Please note that feedback provided at this stage is not a formal representation on the planning application, but will be taken into account in the finalising of our proposal.

A formal period of consultation will follow the submission of the planning application, during which time formal representations can be submitted to Scottish Borders Council.

Feel free to leave your contact details on the postcards provided and we will keep you informed of submission dates.